

STATION RECOVERY SHEET

COUNTY OF SANTA BARBARA
PUBLIC WORKS DEPARTMENT
OFFICE OF THE COUNTY SURVEYOR

STATION NAME: 1016 COUNTY NUMBER: 1016

CLASSIFICATION: First Order

LATITUDE: N 34° 36' 31.99201"

LONGITUDE: W 120° 04' 34.52641"

NORTHING (M): 624969.382

EASTING (M): 1809592.619

DATUM: NAD83 1991.35-HPGN-D

ZONE: CA 5

ELEVATION (M): 203.137

DETERMINED BY: Differential Leveling

DATUM: NAVD88

GEOID HEIGHT (M): -35.026

GEOID MODEL: GEOID90

SCALE FACTOR: 0.99992519

ELEVATION SCALE FACTOR: 0.99996812

COMBINATION FACTOR: 0.99989331

CONVERGENCE: -1° 11' 00.568972"

MONUMENT ESTABLISHED BY: Martin, Northart & Spencer, Inc.

DATE: 1993

POSITION ESTABLISHED BY: Martin, Northart & Spencer, Inc.

DATE: 1993

THOMAS BROS. REF. (1992 ED): 921 C-6

USGS-QUAD: Santa Ynez

DESCRIPTION: 3-1/4 inch brass cap set on a 16 foot x 3/4 inch stainless steel rod encased in a 5 inch monument well stamped "S.B. CO.", "GPS CONTROL", STA 1016", "1993 PLS 6392".

TO REACH: From intersection of Highway 154 and Highway 246, west on Highway 246, 0.8 miles to road to airport. Drive toward airport 0.6 miles. Station is on right (north) side of road, 15 feet west of end of asphalt concrete berm, 50 feet east of power pole #GT46923.

COUNTY STATION 1016



Looking at Monument



Looking North

STATION RECOVERY SHEET

COUNTY OF SANTA BARBARA
PUBLIC WORKS DEPARTMENT
OFFICE OF THE COUNTY SURVEYOR

STATION NAME: 1017

COUNTY NUMBER: 1017

CLASSIFICATION: First Order

LATITUDE: N 34° 38' 59.78915"

LONGITUDE: W 120° 03' 49.15705"

NORTHING (M): 629498.638

EASTING (M): 1810841.693

DATUM: NAD83 1991.35-HPGN-D

ZONE: CA 5

ELEVATION (M): 248.680

DETERMINED BY: Differential Leveling

DATUM: NAVD88

GEOID HEIGHT (M): -34.888

GEOID MODEL: GEOID90

SCALE FACTOR: 0.99992368

ELEVATION SCALE FACTOR: 0.99996098

COMBINATION FACTOR: 0.99988466

CONVERGENCE: -1° 10' 34.707897"

MONUMENT ESTABLISHED BY: Martin, Northart & Spencer, Inc.

DATE: 1993

POSITION ESTABLISHED BY: Martin, Northart & Spencer, Inc.

DATE: 1993

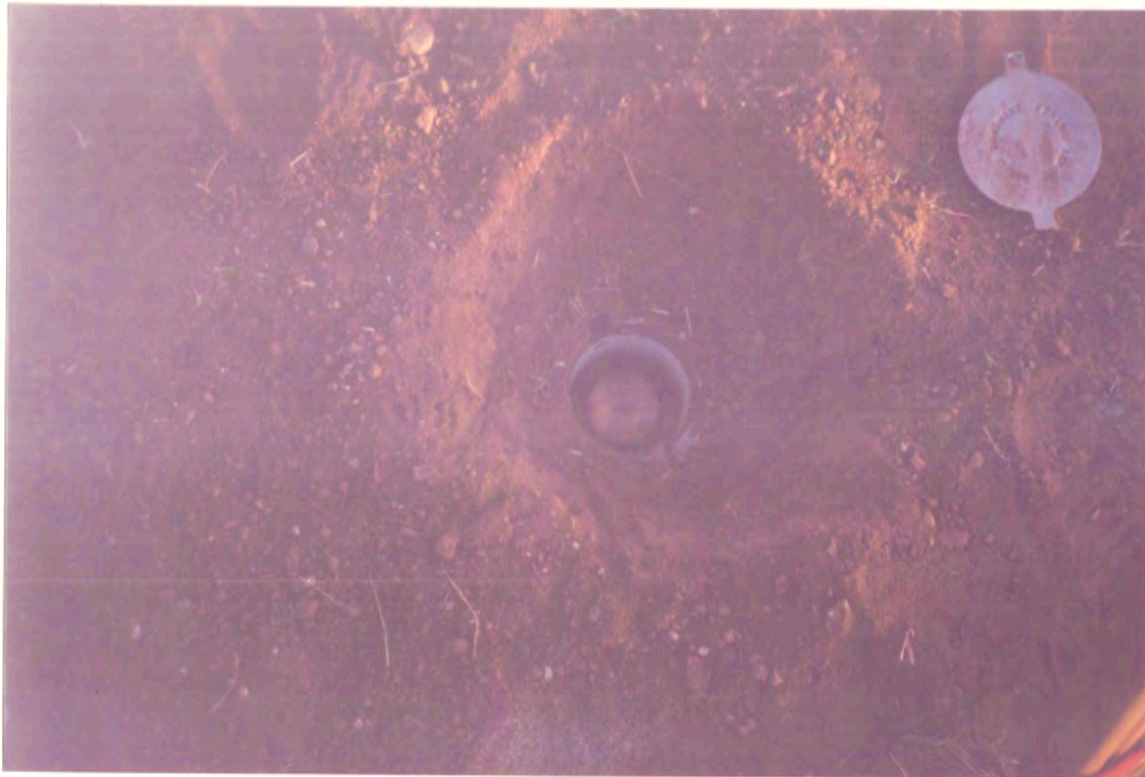
THOMAS BROS. REF. (1992 ED): 901 E-7

USGS-QUAD: Los Olivos

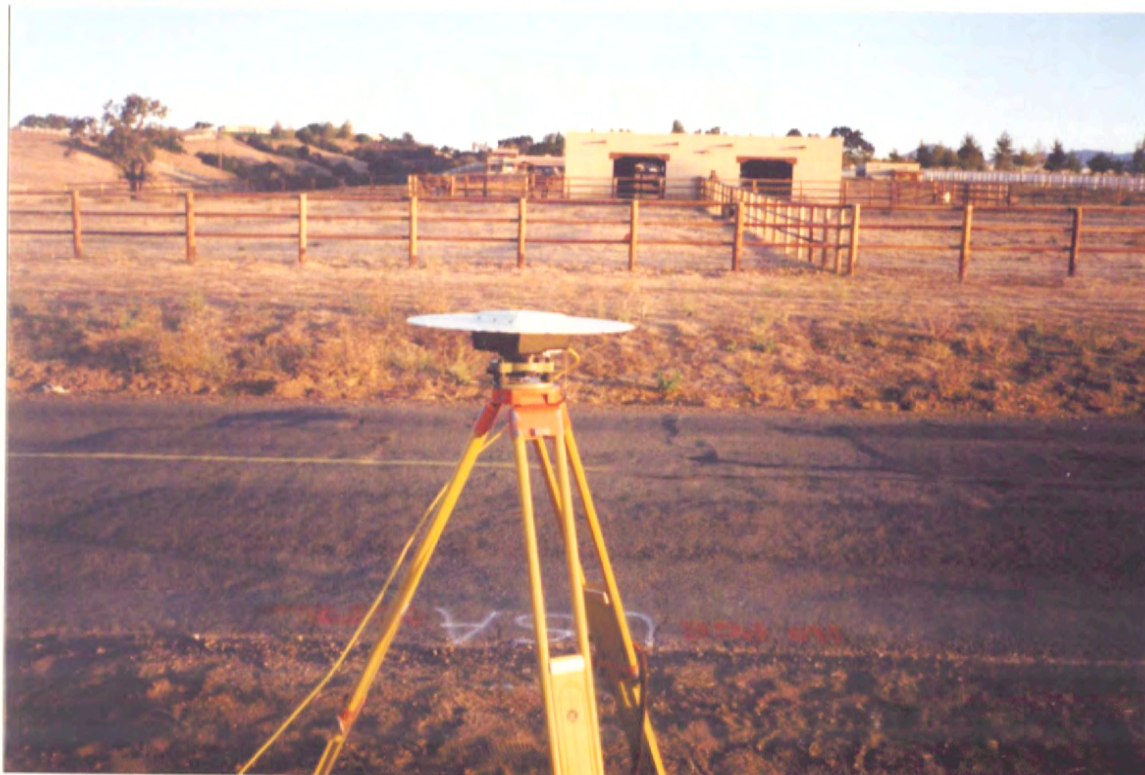
DESCRIPTION: : 3-1/4 inch brass cap set on a 16 foot x 3/4 inch stainless steel rod encased in a 5 inch monument well stamped "S.B. CO.", "GPS CONTROL", STA 1017", "1993 PLS 6392".

TO REACH: From intersection of Highway 154 and Roblar Avenue, 1.8 miles east on Roblar Avenue. 200 feet west of Sunnyfield Farms driveway (4101 Roblar Avenue) on south side of road.

COUNTY STATION 1017



Looking at Monument



Looking North

STATION RECOVERY SHEET

COUNTY OF SANTA BARBARA
PUBLIC WORKS DEPARTMENT
OFFICE OF THE COUNTY SURVEYOR

STATION NAME: 1018 COUNTY NUMBER: 1018

CLASSIFICATION: First Order

LATITUDE: N 34° 40' 11.90375" LONGITUDE: W 120° 06' 54.04972"

NORTHING (M): 631818.047 EASTING (M): 1806181.465

DATUM: NAD83 1991.35-HPGN-D ZONE: CA 5

ELEVATION (M): 254.863 DETERMINED BY: Differential Leveling

DATUM: NAVD88

GEOID HEIGHT (M): -34.967 GEOID MODEL: GEOID90

SCALE FACTOR: 0.99992312 ELEVATION SCALE FACTOR: 0.99996001

COMBINATION FACTOR: 0.99988313 CONVERGENCE: -1° 12' 20.098918"

MONUMENT ESTABLISHED BY: Martin, Northart & Spencer, Inc.

DATE: 1993

POSITION ESTABLISHED BY: Martin, Northart & Spencer, Inc.

DATE: 1993

THOMAS BROS. REF. (1992 ED): 900 H-4 USGS-QUAD: Los Olivos

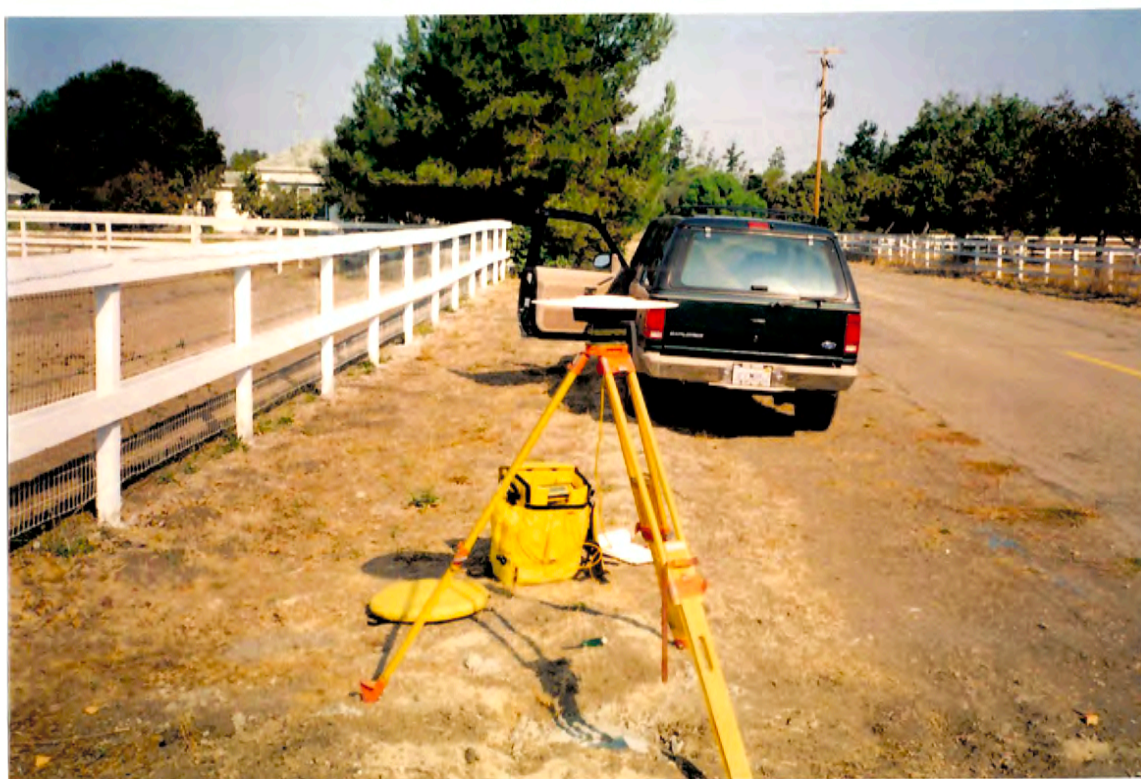
DESCRIPTION: : 3-1/4 inch brass cap set on a 12 foot x 3/4 inch stainless steel rod encased in a 5 inch monument well stamped "S.B. CO.", "GPS CONTROL", STA 1018", "1993 PLS 6392".

TO REACH: From intersection of Highway 154 and Figueroa Mountain Road in Los Olivos, then north on Figueroa Mountain Road 0.15 miles. Station is on west side of road approximately 135 feet north of mile marker "Fig. 0.13".

COUNTY STATION 1018



Looking at Monument



Looking North

STATION RECOVERY SHEET

COUNTY OF SANTA BARBARA
PUBLIC WORKS DEPARTMENT
OFFICE OF THE COUNTY SURVEYOR

STATION NAME: 1019

COUNTY NUMBER: 1019

CLASSIFICATION: First Order

LATITUDE: N 34° 37' 13.07422"

LONGITUDE: W 120° 11' 35.35383"

NORTHING (M): 626462.596

EASTING (M): 1798901.662

DATUM: NAD83 1991.35-HPGN-D

ZONE: CA 5

ELEVATION (M): 157.660

DETERMINED BY: Differential Leveling

DATUM: NAVD88

GEOID HEIGHT (M): -35.214

GEOID MODEL: GEOID90

SCALE FACTOR: 0.99992472

ELEVATION SCALE FACTOR: 0.99997526

COMBINATION FACTOR: 0.99989998

CONVERGENCE: -1° 15' 00.445608"

MONUMENT ESTABLISHED BY: Martin, Northart & Spencer, Inc.

DATE: 1993

POSITION ESTABLISHED BY: Martin, Northart & Spencer, Inc.

DATE: 1993

THOMAS BROS. REF. (1992 ED): 919 H-4

USGS-QUAD: Solvang

DESCRIPTION: : 3-1/4 inch brass cap set on a 16.3 foot x 3/4 inch stainless steel rod encased in a 5 inch monument well stamped "S.B. CO.", "GPS CONTROL", STA 1019", "1993 PLS 6392".

TO REACH: From intersection of Highway 246 and Avenue of the Flags in the City of Buellton, north on Avenue of the Flags 0.5 miles to Jonata Park Road. North on Jonata Park Road 0.1 miles to gate approximately 80 feet north of CalTrans yard at 721 Jonata Park Road. Go through locked gate (key at City Hall) and follow gravel road west, uphill and then south for approximately 0.5 miles to another locked gate to fence surrounding two of the City of Buellton's reservoirs. Station is located on west side of fenced area between two reservoirs.

COUNTY STATION 1019



Looking at Monument



Looking North

STATION RECOVERY SHEET

COUNTY OF SANTA BARBARA
PUBLIC WORKS DEPARTMENT
OFFICE OF THE COUNTY SURVEYOR

STATION NAME: 1020 COUNTY NUMBER: 1020

CLASSIFICATION: First Order

LATITUDE: N 34° 36' 29.30635" LONGITUDE: W 120° 08' 45.11816"

NORTHING (M): 625020.717 EASTING (M): 1803208.189

DATUM: NAD83 1991.35-HPGN-D ZONE: CA 5

ELEVATION (M): 226.923 DETERMINED BY: Differential Leveling

DATUM: NAVD88

GEOID HEIGHT (M): -35.164 GEOID MODEL: GEOID90

SCALE FACTOR: 0.99992522 ELEVATION SCALE FACTOR: 0.99996439

COMBINATION FACTOR: 0.99988961 CONVERGENCE: -1° 13' 23.409251"

MONUMENT ESTABLISHED BY: Martin, Northart & Spencer, Inc.

DATE: 1993

POSITION ESTABLISHED BY: Martin, Northart & Spencer, Inc.

DATE: 1993

THOMAS BROS. REF. (1992 ED): 920 D-6 USGS-QUAD: Solvang

DESCRIPTION: : 3-1/4 inch brass cap set on a 16 foot x 3/4 inch stainless steel rod encased in a 5 inch monument well stamped "S.B. CO.", "GPS CONTROL", STA 1020", "1993 PLS 6392".

TO REACH: From intersection of Highway 246 and Atterdag Road in Solvang, turn north on Atterdag Road, follow for 1.5 miles (road turns into Chalk Hill Road) to Silkeborg Road. Turn right (east) on Silkeborg Road follow Silkeborg Road for 150 feet to Ribe Road. Turn left (north) on Ribe Road (paved) and follow Ribe Road 0.2 miles to cul-de-sac. At cul-de-sac, go through locked gate (key at City of Solvang, Public Works) to the north. Follow dirt road approximately 600 feet to water tank at top of hill, continue on dirt road around to south of water tank. Station is located approximately 20 feet south of dirt road (about 60 feet south of water tank) in open field.

COUNTY STATION 1020



Looking at Monument



Looking North

STATION RECOVERY SHEET

COUNTY OF SANTA BARBARA
PUBLIC WORKS DEPARTMENT
OFFICE OF THE COUNTY SURVEYOR

STATION NAME: HPGN D CA 05 DQ COUNTY NUMBER: 1021

CLASSIFICATION: Second Order

LATITUDE: N 34° 40' 50.60252"

LONGITUDE: W 120° 09' 24.57631"

NORTHING (M): 633091.612

EASTING (M): 1802375.920

DATUM: NAD83 1991.35-HPGN-D

ZONE: CA 5

ELEVATION (M): 225.455

DETERMINED BY: Differential Leveling

DATUM: NAVD88

GEOID HEIGHT (M): -35.064

GEOID MODEL: GEOID90

SCALE FACTOR: 0.99992288

ELEVATION SCALE FACTOR: 0.99996462

COMBINATION FACTOR: 0.99988750

CONVERGENCE: -1° 13' 45.900865"

MONUMENT ESTABLISHED BY: California Department Of Transportation

DATE: 1993

POSITION ESTABLISHED BY: California Department Of Transportation

DATE: 1993

THOMAS BROS. REF. (1992 ED): 900 C-3

USGS-QUAD: Zaca Creek

DESCRIPTION: California Department of Transportation 2-1/2 inch aluminum cap on steel rod stamped "CA. HPGN
DENSIFICATION", "SB 101", "PM 62.63", "STA 05-DQ", "1993".

REACH: Drive west to the west end of Highway 154, approximately 50 feet before approaching Highway 101 turn
left and go 200 feet where the monument will be on your right hand side at the highway right-of-way.

COUNTY STATION 1021



Looking at Monument



Looking North

STATION RECOVERY SHEET

COUNTY OF SANTA BARBARA
PUBLIC WORKS DEPARTMENT
OFFICE OF THE COUNTY SURVEYOR

STATION NAME: Flags COUNTY NUMBER: 1022

CLASSIFICATION: Second Order

LATITUDE: N 34° 36' 15.09572" LONGITUDE: W 120° 11' 35.74155"

NORTHING (M): 624676.771 EASTING (M): 1798852.811

DATUM: NAD83 1991.35-HPGN-D ZONE: CA 5

ELEVATION (M): 105.606 DETERMINED BY: Differential Leveling

DATUM: NAVD88

GEOID HEIGHT (M): -35.231 GEOID MODEL: GEOID90

SCALE FACTOR: 0.99992540 ELEVATION SCALE FACTOR: 0.99998343

COMBINATION FACTOR: 0.99990883 CONVERGENCE: -1° 15' 00.666613"

MONUMENT ESTABLISHED BY: California Division of Highways

DATE: 1976

POSITION ESTABLISHED BY: California Division of Highways

DATE: 1976

THOMAS BROS. REF. (1992 ED): 919 H-6 USGS-QUAD: Solvang

DESCRIPTION: 3-5/8 inch brass disc in concrete stamped "CALIFORNIA DIVISION OF HIGHWAYS", "FLAGS",
"1976".

TO REACH: Turn south from Highway 246 onto Avenue of the Flags in Buellton and go 0.50 miles. Monument is on
the right hand side of the road.

COUNTY STATION 1022



Looking at Monument



Looking North

STATION RECOVERY SHEET

COUNTY OF SANTA BARBARA
PUBLIC WORKS DEPARTMENT
OFFICE OF THE COUNTY SURVEYOR

STATION NAME: Jackie

COUNTY NUMBER: 1023

CLASSIFICATION: Second Order

LATITUDE: N 34° 36' 42.09292"

LONGITUDE: W 120° 03' 24.51685"

NORTHING (M): 625243.885

EASTING (M): 1811382.173

DATUM: NAD83 1991.35-HPGN-D

ZONE: CA 5

ELEVATION (M): 215.121

DETERMINED BY: Differential Leveling

DATUM: NAVD88

GEOID HEIGHT (M): -34.95

GEOID MODEL: GEOID90

SCALE FACTOR: 0.99992507

ELEVATION SCALE FACTOR: 0.99996624

COMBINATION FACTOR: 0.99989131

CONVERGENCE: -1° 10' 20.662690"

MONUMENT ESTABLISHED BY: California Division of Highways

DATE: 1976

POSITION ESTABLISHED BY: California Division of Highways

DATE: 1976

THOMAS BROS. REF. (1992 ED): 921 F-6

USGS-QUAD: Santa Ynez

DESCRIPTION: 3-5/8 inch brass disc in concrete stamped "CALIFORNIA DIVISION OF HIGHWAYS", "JACKIE",
"1976".

TO REACH: Intersection of Highway 154 and Highway 246 approximately 500 feet northwest of intersection, along
Highway 154 approximately 40 feet southwest of centerline of Highway 154.

COUNTY STATION 1023



Looking at Monument



Looking North

STATION RECOVERY SHEET

COUNTY OF SANTA BARBARA
PUBLIC WORKS DEPARTMENT
OFFICE OF THE COUNTY SURVEYOR

STATION NAME: 1141 COUNTY NUMBER: 1141

CLASSIFICATION: Second Order

LATITUDE: N 34° 35' 03.19891"

LONGITUDE: W 120° 08' 43.13579"

NORTHING (M): 622367.059

EASTING (M): 1803202.059

DATUM: NAD83 1991.35-HPGN-D

ZONE: CA 5

ELEVATION (M): 122.449

DETERMINED BY: Differential Leveling

DATUM: NAVD88

GEOID HEIGHT (M): -35.207

GEOID MODEL: GEOID90

SCALE FACTOR: 0.99992634

ELEVATION SCALE FACTOR: 0.99998078

COMBINATION FACTOR: 0.99990713

CONVERGENCE: -1° 13' 22.279277"

MONUMENT ESTABLISHED BY: Martin, Northart & Spencer, Inc.

DATE: 1993

POSITION ESTABLISHED BY: Martin, Northart & Spencer, Inc.

DATE: 1993

THOMAS BROS. REF. (1992 ED): 921 D-2

USGS-QUAD: Solvang

DESCRIPTION: 3-1/4 inch brass cap on 2 inch pipe in concrete monument well stamped "S.B. CO.", "GPS CONTROL",
"STA 1141", "1993 PLS 6392".

TO REACH: From intersection of Highway 246 and Alisal Road in Solvang, south on Alisal for 0.70 miles to bridge,
over Santa Ynez River. At south end of bridge take immediate right turn (west). Drive 30 feet to gate, station is just
before gate on riverside of gate.

COUNTY STATION 1141



Looking at Monument



Looking North

STATION RECOVERY SHEET

COUNTY OF SANTA BARBARA
PUBLIC WORKS DEPARTMENT
OFFICE OF THE COUNTY SURVEYOR

STATION NAME: 1142

COUNTY NUMBER: 1142

CLASSIFICATION: Second Order

LATITUDE: N 34° 38' 08.65883"

LONGITUDE: W 120° 05' 52.23887"

NORTHING (M): 627988.392

EASTING (M): 1807675.404

DATUM: NAD83 1991.35-HPGN-D

ZONE: CA 5

ELEVATION (M): 212.281

DETERMINED BY: Differential Leveling

DATUM: NAVD88

GEOID HEIGHT (M): -35.041

GEOID MODEL: GEOID90

SCALE FACTOR: 0.99992414

ELEVATION SCALE FACTOR: 0.99996669

COMBINATION FACTOR: 0.99989083

CONVERGENCE: -1° 11' 44.865999"

MONUMENT ESTABLISHED BY: Martin, Northart & Spencer, Inc.

DATE: 1993

POSITION ESTABLISHED BY: Martin, Northart & Spencer, Inc.

DATE: 1993

THOMAS BROS. REF. (1992 ED): 921 A-2

USGS-QUAD: Los Olivos

DESCRIPTION: : 3-1/4 inch brass cap on 2 inch pipe in concrete monument well stamped "S.B. CO.", "GPS CONTROL", "STA 1142", "1993 PLS 6392".

TO REACH: From intersection of Highway 154 and Baseline Avenue, 0.5 miles west to intersection of Refugio Road and Baseline Avenue. Station is located at the northeast corner of intersection of Baseline Avenue and Refugio Road.

COUNTY STATION 1142



Looking at Monument



Looking North

STATION RECOVERY SHEET

COUNTY OF SANTA BARBARA
PUBLIC WORKS DEPARTMENT
OFFICE OF THE COUNTY SURVEYOR

STATION NAME: 1143 COUNTY NUMBER: 1143

CLASSIFICATION: Second Order

LATITUDE: N 34° 38' 44.96311"

LONGITUDE: W 120° 05' 52.49602"

NORTHING (M): 629106.916

EASTING (M): 1807692.202

DATUM: NAD83 1991.35-HPGN-D

ZONE: CA 5

ELEVATION (M): 225.754

DETERMINED BY: Differential Leveling

DATUM: NAVD88

GEOID HEIGHT (M): -35.000

GEOID MODEL: GEOID90

SCALE FACTOR: 0.99992381

ELEVATION SCALE FACTOR: 0.99996457

COMBINATION FACTOR: 0.99988839

CONVERGENCE: -1° 11' 45.012580"

MONUMENT ESTABLISHED BY: Martin, Northart & Spencer, Inc.

DATE: 1993

POSITION ESTABLISHED BY: Martin, Northart & Spencer, Inc.

DATE: 1993

THOMAS BROS. REF. (1992 ED): 921 A-1

USGS-QUAD: Los Olivos

DESCRIPTION: : 3-1/4 inch brass cap on 2 inch pipe in concrete monument well stamped "S.B. CO.", "GPS CONTROL",
"STA 1143", "1993 PLS 6392".

TO REACH: From intersection of Baseline Avenue and Refugio Road, north on Refugio Road 0.7 miles. Station is on
west side of road, by open field approximately 40 feet north of driveway to 2131 Refugio Road.

COUNTY STATION 1143



Looking at Monument



Looking North

STATION RECOVERY SHEET

COUNTY OF SANTA BARBARA
PUBLIC WORKS DEPARTMENT
OFFICE OF THE COUNTY SURVEYOR

STATION NAME: 1144 COUNTY NUMBER: 1144

CLASSIFICATION: Second Order

LATITUDE: N 34° 39' 27.90333"

LONGITUDE: W 120° 06' 54.22764"

NORTHING (M): 630462.669

EASTING (M): 1806148.411

DATUM: NAD83 1991.35-HPGN-D

ZONE: CA 5

ELEVATION (M): 236.093

DETERMINED BY: Differential Leveling

DATUM: NAVD88

GEOID HEIGHT (M): -35.011

GEOID MODEL: GEOID90

SCALE FACTOR: 0.99992345

ELEVATION SCALE FACTOR: 0.99996295

COMBINATION FACTOR: 0.99988640

CONVERGENCE: -1° 12' 20.200334"

MONUMENT ESTABLISHED BY: Martin, Northart & Spencer, Inc.

DATE: 1993

POSITION ESTABLISHED BY: Martin, Northart & Spencer, Inc.

DATE: 1993

THOMAS BROS. REF. (1992 ED): 900 H-6

USGS-QUAD: Los Olivos

DESCRIPTION: : 3-1/4 inch brass cap on 2 inch pipe in concrete monument well stamped "S.B. CO.", "GPS CONTROL", "STA 1144", "1993 PLS 6392".

TO REACH: From intersection of Highway 154 and Grand Avenue in Los Olivos, south on Grand Avenue 0.65 miles.
Point is on east side of road 150 feet south of the intersection of Grand Avenue and Santa Ynez Street.

COUNTY STATION 1144



Looking at Monument



Looking North

STATION RECOVERY SHEET

COUNTY OF SANTA BARBARA
PUBLIC WORKS DEPARTMENT
OFFICE OF THE COUNTY SURVEYOR

STATION NAME: 1145 COUNTY NUMBER: 1145

CLASSIFICATION: Second Order

LATITUDE: N 34° 35' 55.38465"

LONGITUDE: W 120° 09' 32.33058"

NORTHING (M): 624001.499

EASTING (M): 1801983.223

DATUM: NAD83 1991.35-HPGN-D

ZONE: CA 5

ELEVATION (M): 115.384

DETERMINED BY: Differential Leveling

DATUM: NAVD88

GEOID HEIGHT (M): -35.201

GEOID MODEL: GEOID90

SCALE FACTOR: 0.99992564

ELEVATION SCALE FACTOR: 0.99998189

COMBINATION FACTOR: 0.99990753

CONVERGENCE: -1° 13' 50.320890"

MONUMENT ESTABLISHED BY: California Division of Highways

DATE: Unknown

POSITION ESTABLISHED BY: Martin, Northart & Spencer, Inc.

DATE: 1993

THOMAS BROS. REF. (1992 ED): 920 C-7

USGS-QUAD: Solvang

DESCRIPTION: 1 inch iron pipe with yellow plastic cap with a stainless steel cap on top of the plastic cap 1 foot below
grade at California Station Post Mile 28.30, Highway 246, stamped "State of California", "Division of Highways",
"PLN 28.30".

TO REACH: From intersection of Atterdag Road and Highway 246 in Solvang, west on Highway 246, 1.1 miles.
Station is on south shoulder of Highway, 1 foot below grade.

COUNTY STATION 1145



Looking at Monument



Looking North