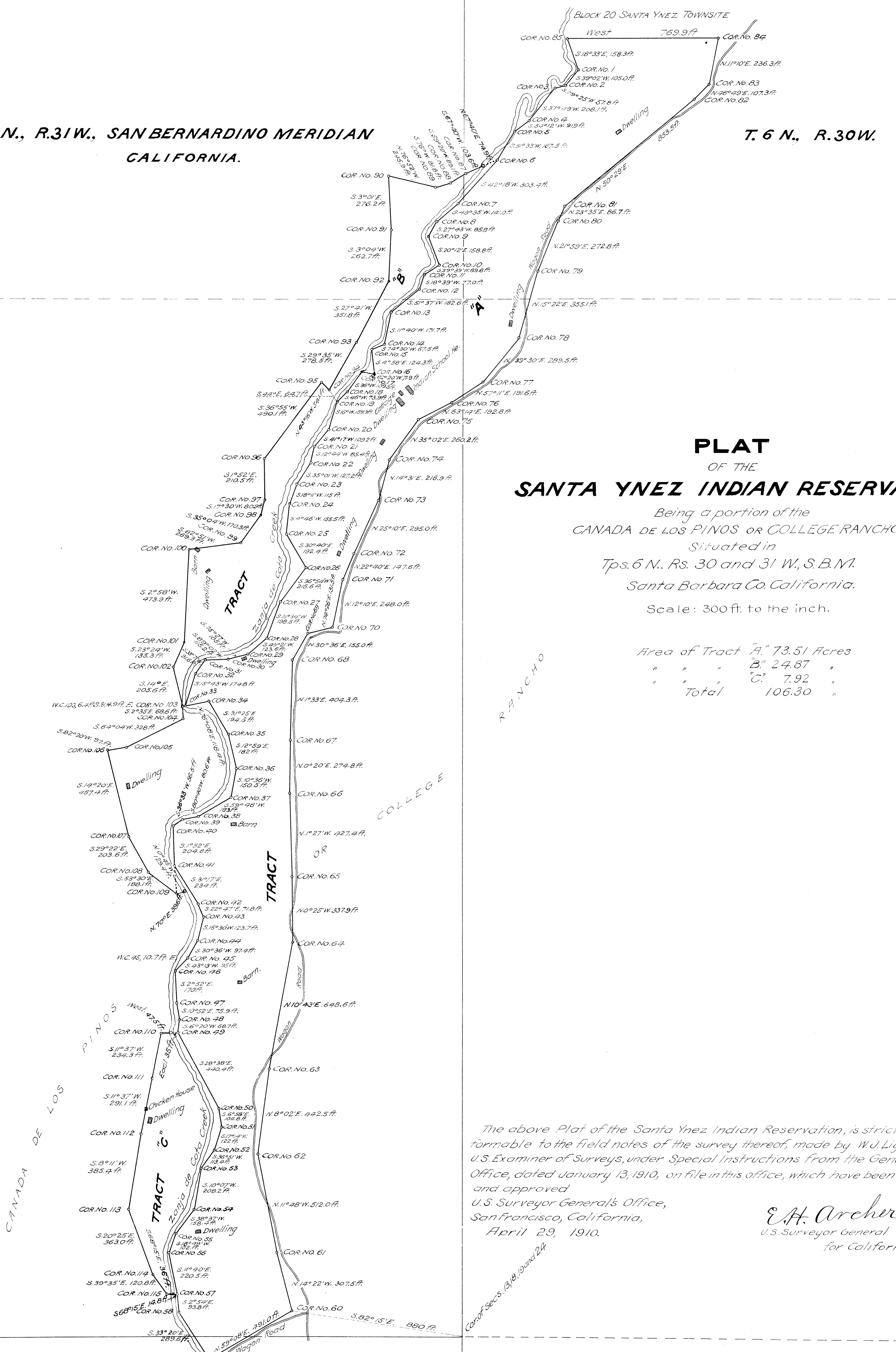


T. 6 N., R. 31 W., SAN BERNARDINO MERIDIAN
CALIFORNIA.

T. 6 N., R. 30 W.



PLAT
OF THE
SANTA YNEZ INDIAN RESERVATION,

Being a portion of the
CANADA DE LOS PINOS or COLLEGE RANCHO
Situated in
Tps. 6 N., Rs. 30 and 31 W., S. B. M.
Santa Barbara Co. California.

Scale: 300 ft. to the inch.

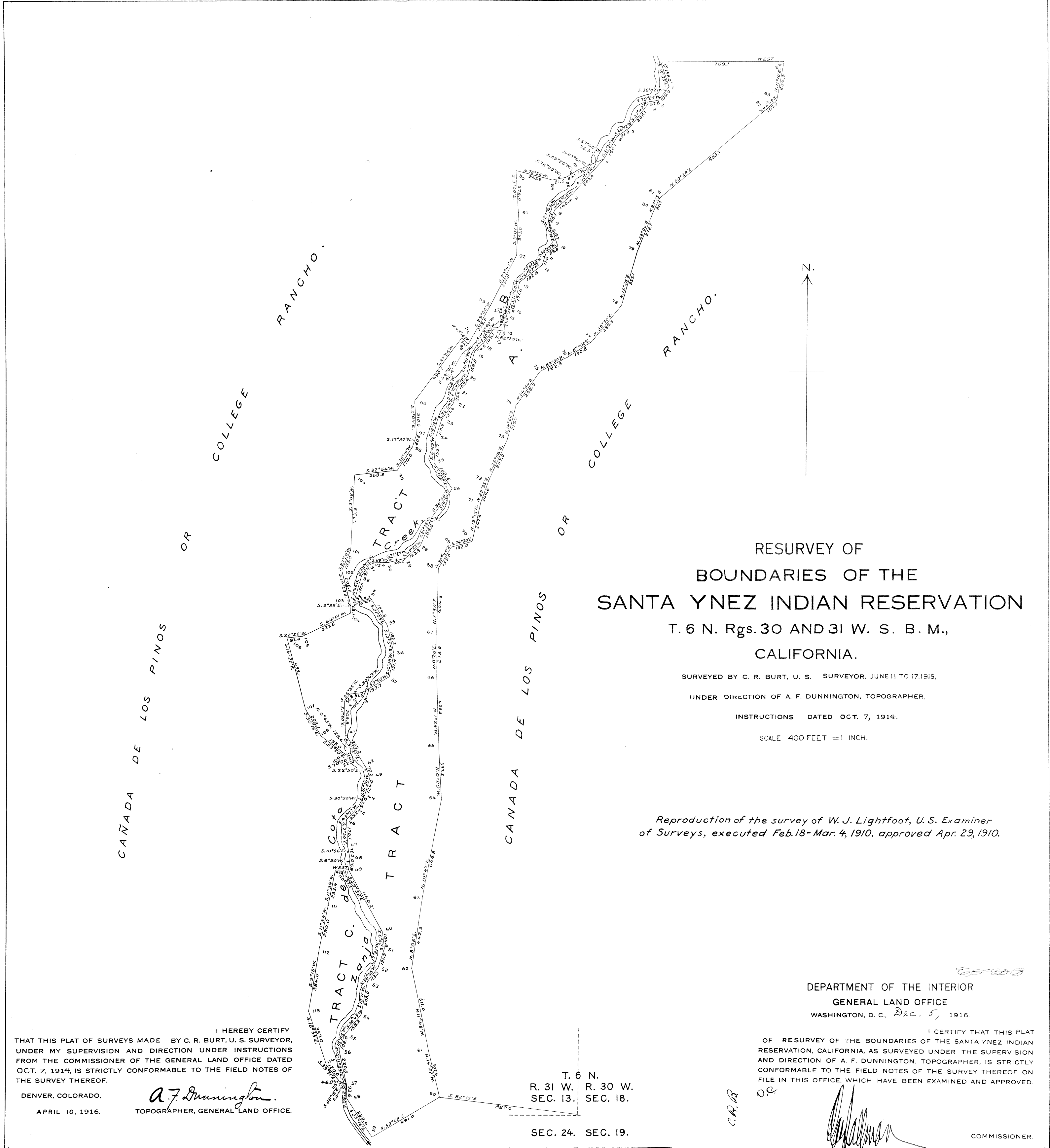
Area of Tract "A"	73.51 Acres
" " " "B"	24.87 "
" " " "C"	7.92 "
Total	106.30 "

The above Plat of the Santa Ynez Indian Reservation, is strictly conformable to the field notes of the survey thereof, made by W. J. Lightfoot, U.S. Examiner of Surveys, under Special Instructions from the General Land Office, dated January 13, 1910, on file in this office, which have been examined and approved
U.S. Surveyor General's Office,
San Francisco, California,
April 29, 1910.

E. H. Archer
U.S. Surveyor General
for California.

Accepted per Letter "B"
dated Oct 26, 1912.

99 23 90 22 90 22



RESURVEY OF
BOUNDARIES OF THE
SANTA YNEZ INDIAN RESERVATION
T. 6 N. Rgs. 30 AND 31 W. S. B. M.,
CALIFORNIA.

SURVEYED BY C. R. BURT, U. S. SURVEYOR, JUNE 11 TO 17, 1915,
UNDER DIRECTION OF A. F. DUNNINGTON, TOPOGRAPHER,
INSTRUCTIONS DATED OCT. 7, 1914.
SCALE 400 FEET = 1 INCH.

*Reproduction of the survey of W. J. Lightfoot, U. S. Examiner
of Surveys, executed Feb. 18 - Mar. 4, 1910, approved Apr. 29, 1910.*

I HEREBY CERTIFY
THAT THIS PLAT OF SURVEYS MADE BY C. R. BURT, U. S. SURVEYOR,
UNDER MY SUPERVISION AND DIRECTION UNDER INSTRUCTIONS
FROM THE COMMISSIONER OF THE GENERAL LAND OFFICE DATED
OCT. 7, 1914, IS STRICTLY CONFORMABLE TO THE FIELD NOTES OF
THE SURVEY THEREOF.
DENVER, COLORADO,
A. F. Dunnington
APRIL 10, 1916. TOPOGRAPHER, GENERAL LAND OFFICE.

DEPARTMENT OF THE INTERIOR
GENERAL LAND OFFICE
WASHINGTON, D. C. DEC. 5, 1916.

I CERTIFY THAT THIS PLAT
OF RESURVEY OF THE BOUNDARIES OF THE SANTA YNEZ INDIAN
RESERVATION, CALIFORNIA, AS SURVEYED UNDER THE SUPERVISION
AND DIRECTION OF A. F. DUNNINGTON, TOPOGRAPHER, IS STRICTLY
CONFORMABLE TO THE FIELD NOTES OF THE SURVEY THEREOF ON
FILE IN THIS OFFICE, WHICH HAVE BEEN EXAMINED AND APPROVED.

C. R. BURT
COMMISSIONER

T. 6 N.
R. 31 W. R. 30 W.
SEC. 13. SEC. 18.
SEC. 24. SEC. 19.

REGISTER AND RECEIVER RECEIPT
DATED February 28, 1917