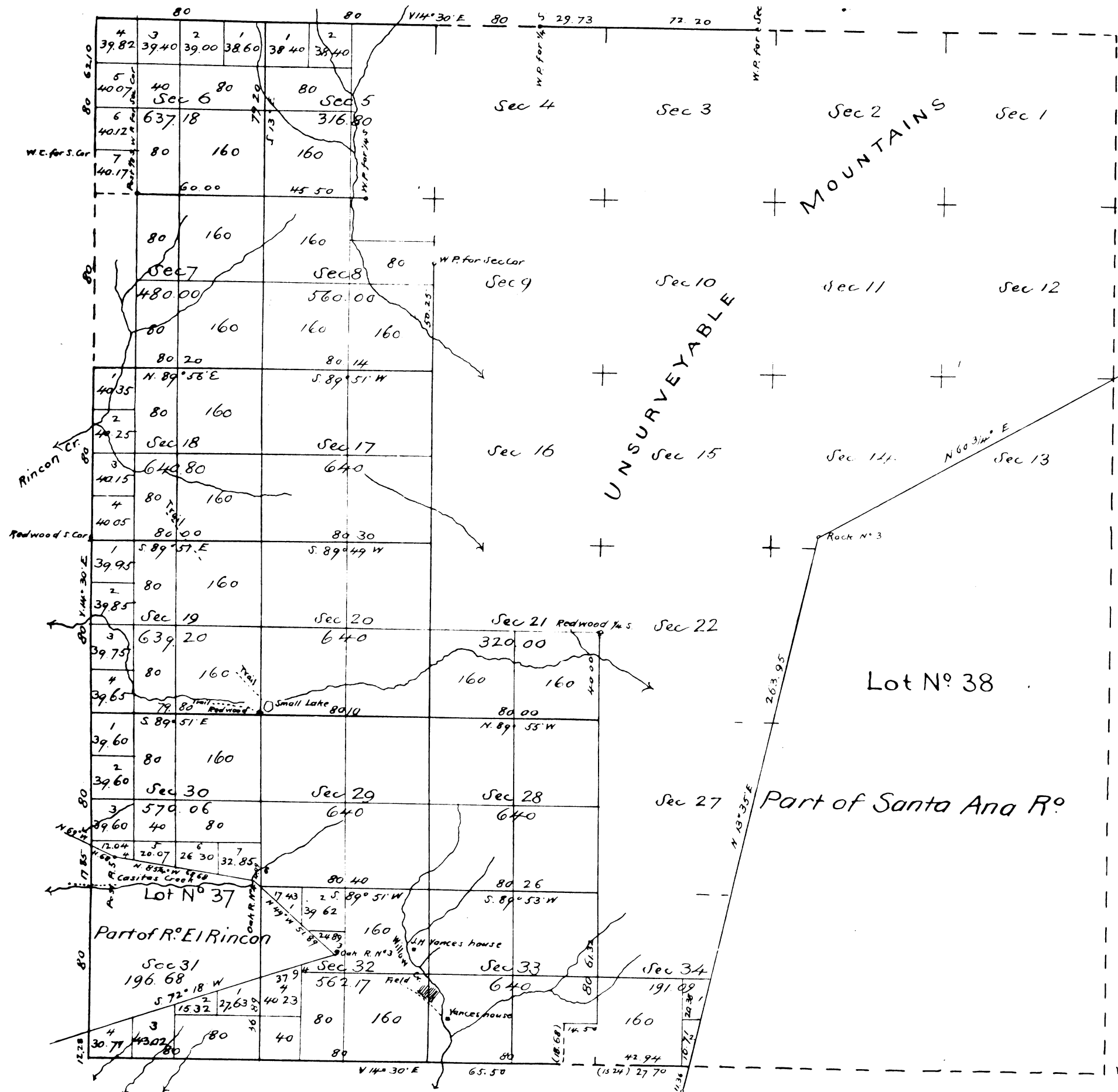


Township N<sup>o</sup> 4 North, Range N<sup>o</sup> 24 West San Bernardino Meridian



Aggregate Area of Public Land Surveyed	8313.98 acres
Estimated Private Grants	5233.64
Unsurveyed Mountain Land	9457.14
<b>Aggregate</b>	<b>23004.76</b>

Transmitted for filing in Register Office at Los Angeles Nov. 9, 1875

Variation reported by Norway on section lines 2' 25" E

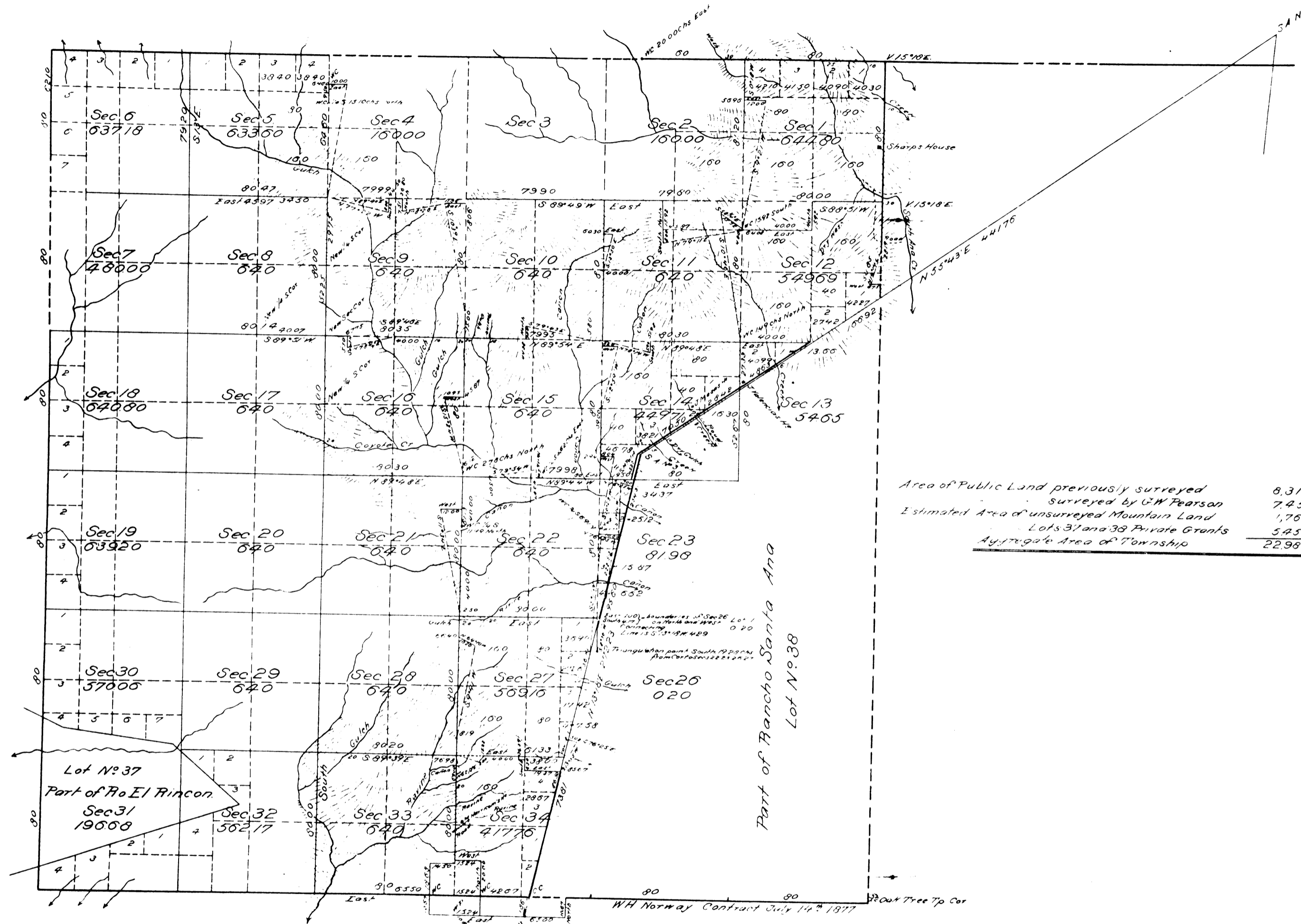
Surveys Designated	By whom surveyed	Date of contract	Cont of surveys	When surveyed
Boundaries of Lot N <sup>o</sup> 37	J. E. Terrell	(Inst) Sept 1 <sup>st</sup> 1858		1860
" " " " " " " "	R. W. Norris	" Jan 23 <sup>rd</sup> "		1859
South boundary of Township	W. H. Norway	January 16 <sup>th</sup> 1871		1871
Ranch boundaries colored green	"	"		1871
Rest of Township lines	"	August 16 <sup>th</sup> 1873		1873
Boundaries of Lot N <sup>o</sup> 37 colored yellow	"	July 5 <sup>th</sup> 1875	1 mt 42 chs 39 lks	1875
Section lines	"	"	23 30 65	July 26 <sup>th</sup> 1875

The above Map of Township N<sup>o</sup> 4 North, Range N<sup>o</sup> 24 West, San Bernardino Meridian, is strictly conformable to the file notes of the surveys thereof on file in this office, which have been examined and approved.

Surveyor General Office  
 San Francisco California  
 November 9, 1875  
*Just G. Patton*  
 Sur. Gen. Cal.

Township N<sup>o</sup> 4 North, Range N<sup>o</sup> 24 West, San Bernardino Meridian.

TEU 01, 5



Area of Public Land previously surveyed	8,313.98 Acres
surveyed by G.W. Pearson	7,453.66
Estimated Area of unsurveyed Mountain Land	1,760.00
Lots 31 and 38 Private Grants	545.27
<u>Average Area of Township</u>	<u>22,985.91</u>

Surveys Designated	By Whom Surveyed	Date of Contract	Amount of Survey	When Surveyed	Mean Decl'n
For Exhibit of Lines previously surveyed see Map of this Township approved November 9 <sup>th</sup> 1875					
Part of N. Body of Tp	G.W. Pearson	October 26 <sup>th</sup> 1892	Sections of T3N4, R24W	1893	15° 14' East
E			2 - 23		
S			1M6 4200, 67145		
Section Lines			7 - 10 - 29		
New			21 - 31 - 32		
Body of No Santa Ana			0 - 153 - 154		
Connecting Lines			3 - 21 - 102	June 15 <sup>th</sup> 1893	

The above Map of Township N<sup>o</sup> 4 North, Range N<sup>o</sup> 24 West, San Bernardino Meridian, is strictly conformable to the field notes of the surveys thereon filed in this Office which have been examined and approved Surveyor General's Office San Francisco California December 2, 1893

*G.W. Field*  
S.S. Survey Gen'l. Cal.