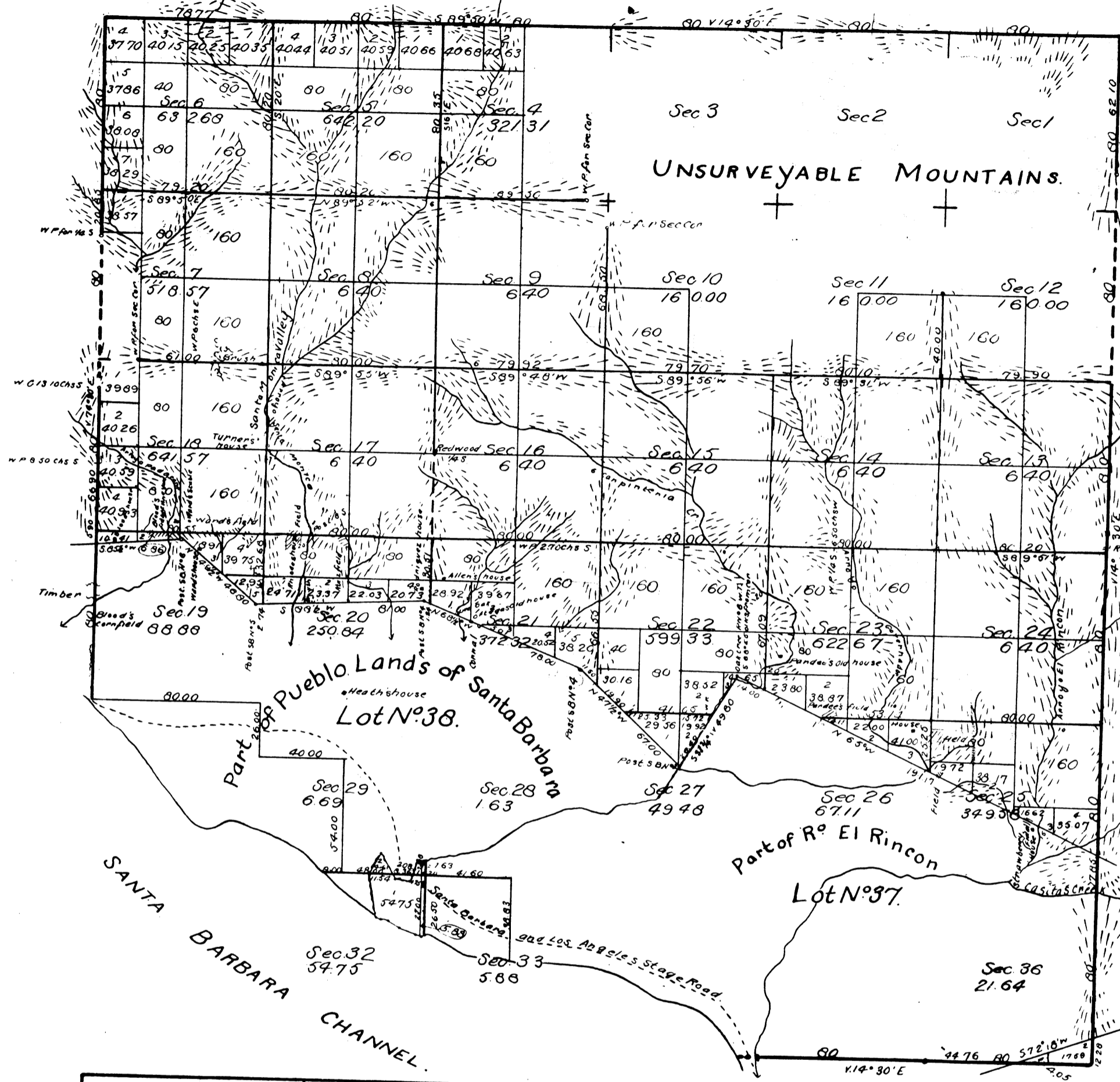


Township N<sup>o</sup> 4 North, Range N<sup>o</sup> 25 West San Bernardino Meridian.



Public Land surveyed by Thompson	68.95 acres.
" " " Norway	10778.18 "
Aggregate Area of Public Land surveyed	10847.13 acres
Estimated " Private Grants	6412.70 "
" " Unserved Mountain Land	3802.62 "
Aggregate	21,064.45 "

Transmitted for filing in Registrar's Office at Los Angeles  
Nov. 9, 1875.

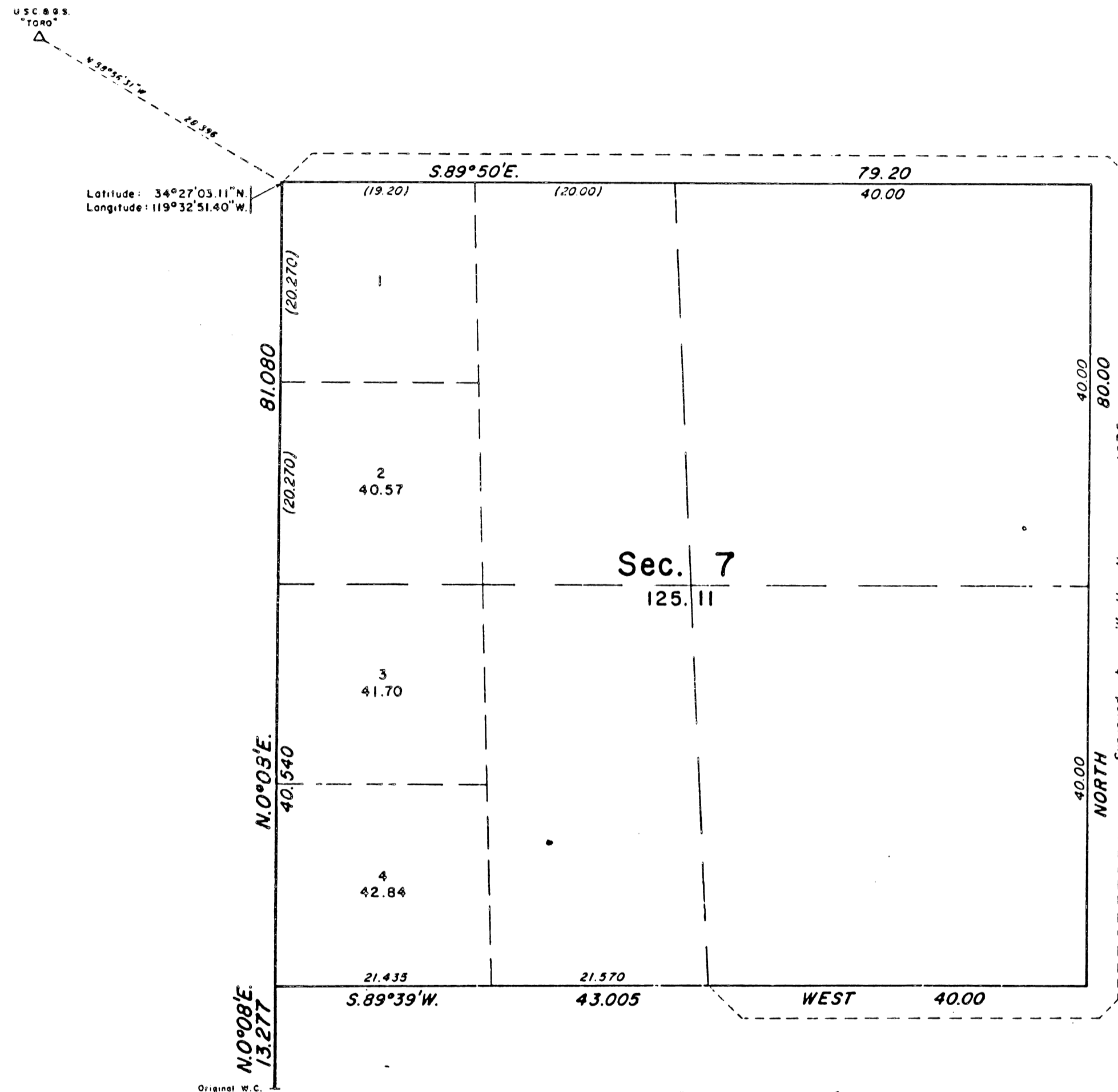
Variation reported by Norway on Section lines 1/4° 25' E.

Surveys Designated	By whom Surveyed	Date of Contract	Area of Surveys	When Surveyed
Township line colored green	R. W. Harris	Oct. 12 <sup>th</sup> 1853		1854
Lines colored brown				1854
Boundaries of Lot N <sup>o</sup> 37	J. E. Tennell	Inst. Sept 1 <sup>st</sup> 1858		1860
Section line colored green	G. H. Thompson	March 8 <sup>th</sup> 1865		1865
Boundaries of Lot N <sup>o</sup> 38 colored green				1865
Meadows				1865
Boundaries of Lot N <sup>o</sup> 38		April 25 <sup>th</sup> 1867		1867
South boundary of Township	W. H. Norway	January 16 <sup>th</sup> 1871		1871
Boundaries of Lot N <sup>o</sup> 37 colored green				1871
Rest of Township lines not colored		August 18 <sup>th</sup> 1873		1873
Township line colored red				1873
Lines colored brown and red				1873
Ranch lines colored yellow		July 5 <sup>th</sup> 1875	37 <sup>1</sup> / <sub>2</sub> 36chs 351As	1875
Section lines not colored			30 75. 39.	July 19 <sup>th</sup> 1875

The above Map of Township N<sup>o</sup> 4 North Range N<sup>o</sup> 25 West, San Bernardino Meridian is strictly conformable to the field notes of the surveys thereof, on file in this Office, which have been examined and approved.  
Surveyor General's Office,  
San Francisco, California,  
November 9<sup>th</sup> 1875.

*Just. Station*  
Surv. Gen. Cal.

TOWNSHIP 4 NORTH, RANGE 25 WEST, OF THE SAN BERNARDINO MERIDIAN, CALIFORNIA.  
COMPLETION SURVEY



A history of surveys is contained in the field notes.

This plat represents the completion survey of a portion of the west boundary, and a portion of the subdivisional lines, Township 4 North, Range 25 West, San Bernardino Meridian, California.

Except as indicated hereon the lottings and areas are as shown on the township plat approved November 9, 1875.

Survey executed by Frank A. Fetscher, Cadastral Surveyor, U.S. Forest Service, beginning September 8, 1986, and completed December 13, 1986, pursuant to Special Instructions dated August 20, 1986, for Group No. 979, California.

UNITED STATES DEPARTMENT OF THE INTERIOR  
BUREAU OF LAND MANAGEMENT

Sacramento, California

This plat is strictly conformable to the approved field notes, and the survey, having been correctly executed in accordance with the requirements of law and the regulations of this Bureau, is hereby accepted.

For the Director

*Master Robert Patton* DECEMBER 17, 1986

ACTING Chief Cadastral Surveyor

**RECEIVED**

JAN 20 1987

COUNTY SURVEYOR  
SANTA BARBARA, CALIF