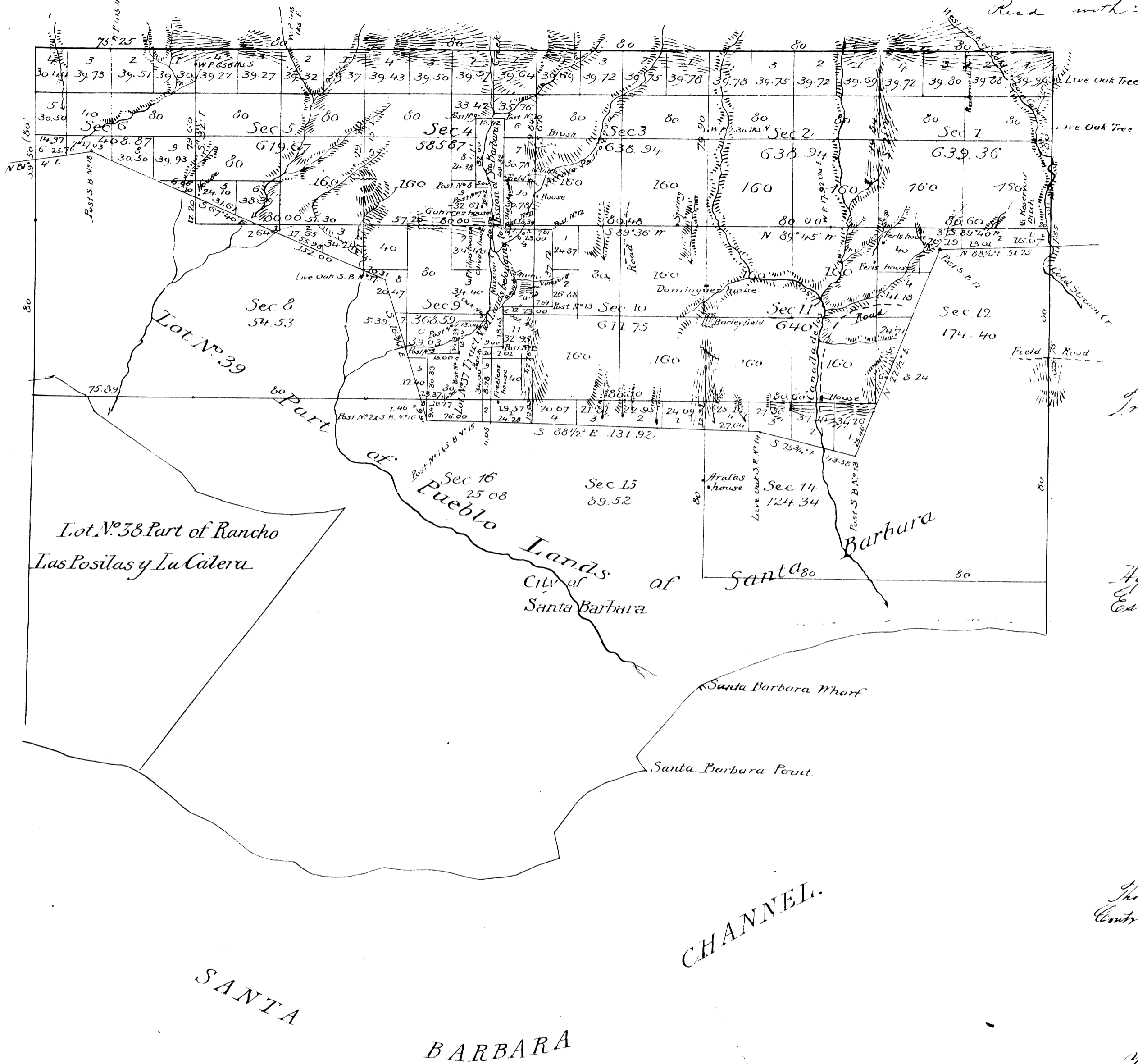


Township N<sup>o</sup> 4 North,

Range N<sup>o</sup> 27 West,

San Bernardino Meridian

Red with Gen Gen's letter of May 19-1875



Transmitted for filing in Register's Office at Los Angeles May 19. 1875.

Aggregate Area of Public Land 5,619.86 Acres  
 Estimated " Private Grant & Mission Lands 9,920.00 "  
Aggregate 15,539.86 "

Three parts of the line colored both green and yellow, re-surveyed under Contract are not charged in present Account.

Variation reported by Norway 114° 45' E.

Surveys Designated	By whom surveyed	Date of Contract	Amount of Survey	When Surveyed
Township and Section lines of green boundaries of Lot N <sup>o</sup> 37	W. H. Morris	October 12 <sup>th</sup> 1853		
" " " " " "	J. C. Ferrall (Part)	Feb 4 <sup>th</sup> 1860		1860
" " " " " "	Chas. H. Kiefer	Oct 19 <sup>th</sup> 1861		1861
" " " " " "	J. C. Ferrall	Aug 1 <sup>st</sup> 1860		1860
" " " " " "	J. St. Thompson	April 25 <sup>th</sup> 1867		1867
The Section lines colored yellow Part of Township lines	W. H. Morris	August 10 <sup>th</sup> 1873		1873
Section	"	March 30 <sup>th</sup> 1875	11. 1/2 31 1/2 28 1/2	1875
Ranch Boundaries colored green	"	"	5 " 29 " 80 "	April 6 <sup>th</sup> 1875

The above Map of Township N<sup>o</sup> 4 North Range N<sup>o</sup> 27 West San Bernardino Meridian is strictly conformable to the field notes of the Survey thereof on file in this Office, which have been examined and approved.  
 Surveyor General's Office,  
 San Francisco California,  
 May 19<sup>th</sup> 1875.

*J. J. Turner*