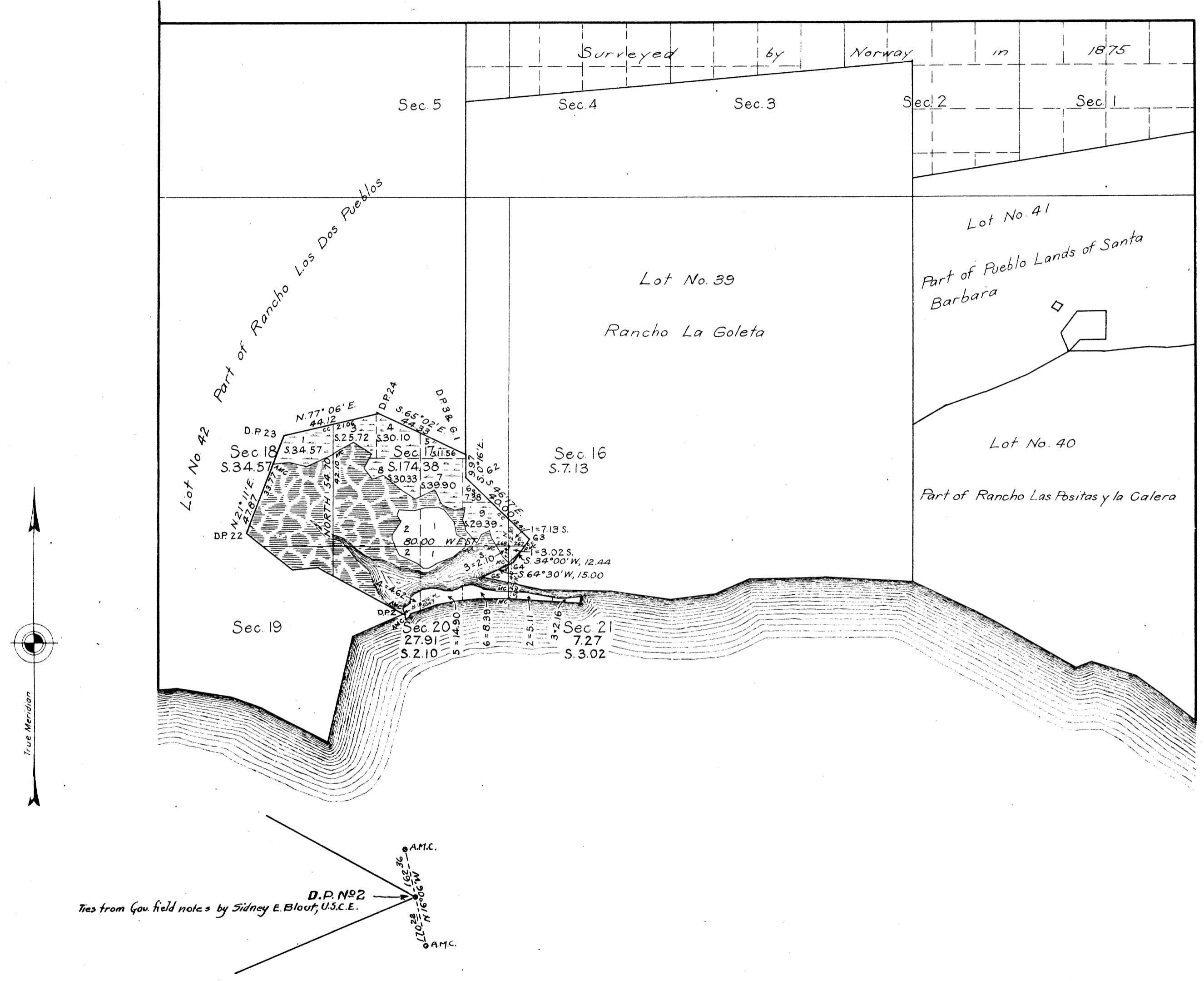
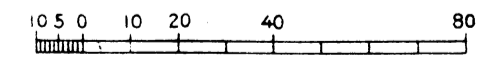


TOWNSHIP N^o 4 NORTH, RANGE N^o 28 WEST, SAN BERNARDINO MERIDIAN, CALIFORNIA



Latitude 34° 25' N. } near cor. of secs.
Longitude 119° 49' W. } 16, 17, 20 & 21.



Mean Magnetic Declination. Scale: 40 Chains to an Inch. Area Surveyed, 256.38 Acres.

LINES DESIGNATED	BY WHOM SURVEYED	NO	GROUP DATE	MILEAGE		WHEN SURVEYED	
				MLS	CHS	BEGUN	COMPLETED
Exterior							
Subdivisional	Sidney E. Blout, U.S.C.E.	149	March 17, 1925	2	16.07	Aug. 8, 1925	Sept 17, 1925
Meander	"	"	"	4	21.38	"	"
Miscellaneous	"	"	"	2	53.73	"	"

Office of U.S. Supervisor of Surveys
 Denver, Colorado, Oct. 28, 1927.
 The above plat of Township No. 4 North, Range No. 28 West,
 of the San Bernardino Meridian, California,
 is strictly conformable to the field notes of the survey
 thereof which have been examined and approved.

Wm. A. Johnson
 U.S. Supervisor of Surveys.

DEPARTMENT OF THE INTERIOR
 GENERAL LAND OFFICE
 Washington, D.C., Nov. 9, 1927
 The survey represented by this plat
 having been correctly executed in accordance
 with the requirements of law and the regulations
 of this office, is hereby accepted.

J. C. ...
 Acting As. ssioner