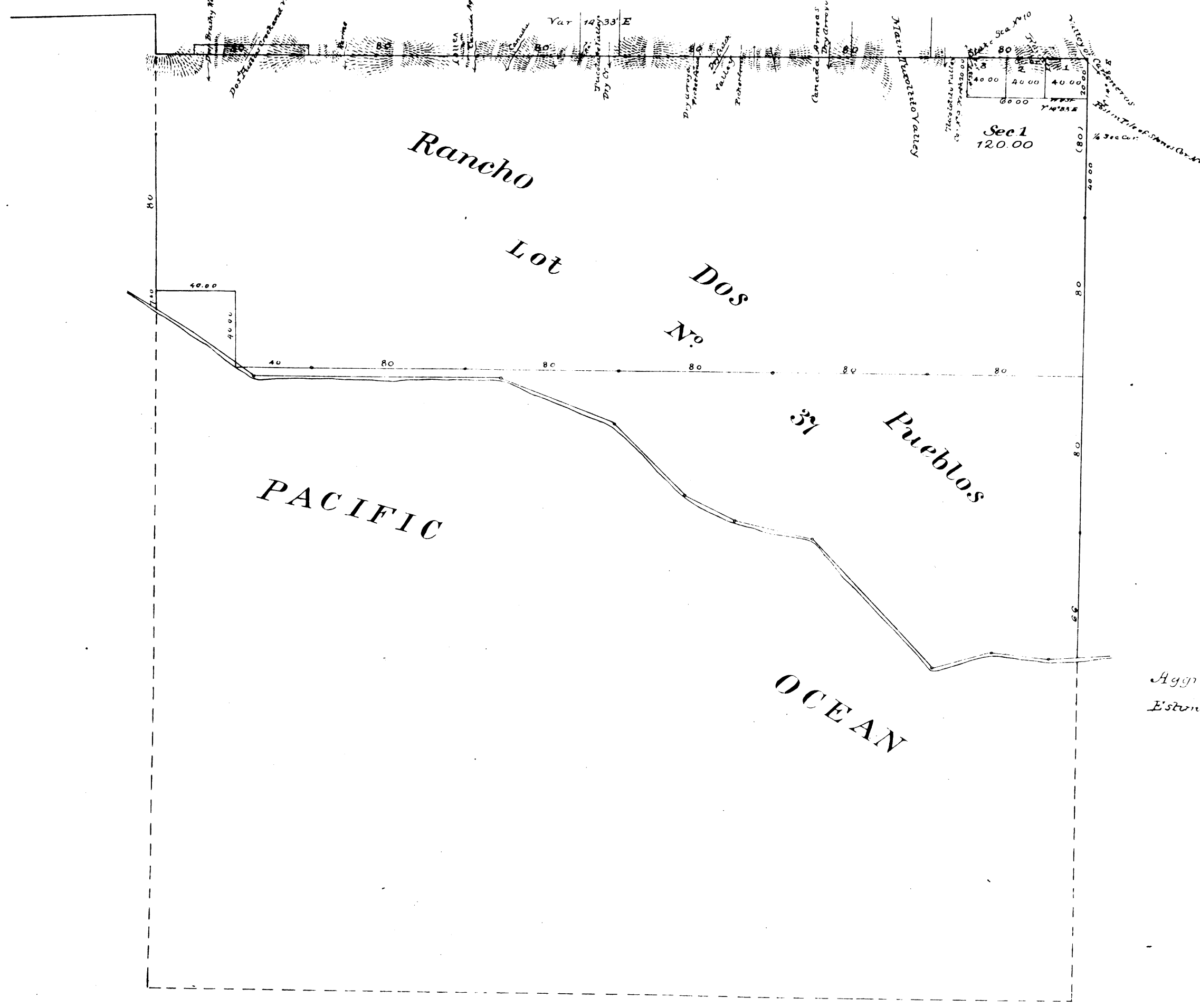


Frac<sup>s</sup> Township N<sup>o</sup> 4 North. Range N<sup>o</sup> 29 West San Bernardino Mer<sup>n</sup>



Recd with Surveyor Genl's letter of  
Nov 4. 1872.

Aggregate Area of Public Land 20 000 00  
Estimated Area of Lot N<sup>o</sup> 37 Private Grant 11 756 00  
Aggregate 11 879 00

Surveys Designated	By whom surveyed	Date of Contract	Amount of Survey	When Surveyed
Township lines (uncolored)	H W Norris	October, 12 <sup>th</sup> 1853		1854
Township lines (colored green)	A H Thompson	February, 10 <sup>th</sup> 1871		1871
Boundaries of Lot N <sup>o</sup> 37 (Private Grant)	" "	Inst. December 11 <sup>th</sup> 1871		1871

This above Map of Fractional Township N<sup>o</sup> 4 North Range N<sup>o</sup> 29 West San Bernardino Meridian is strictly conformable to the field notes of the surveys thereof on file in this Office, which have been examined and approved  
Surveyor General's Office,  
San Francisco, California,  
February 21<sup>st</sup> 1871.

*[Signature]*  
Surveyor General