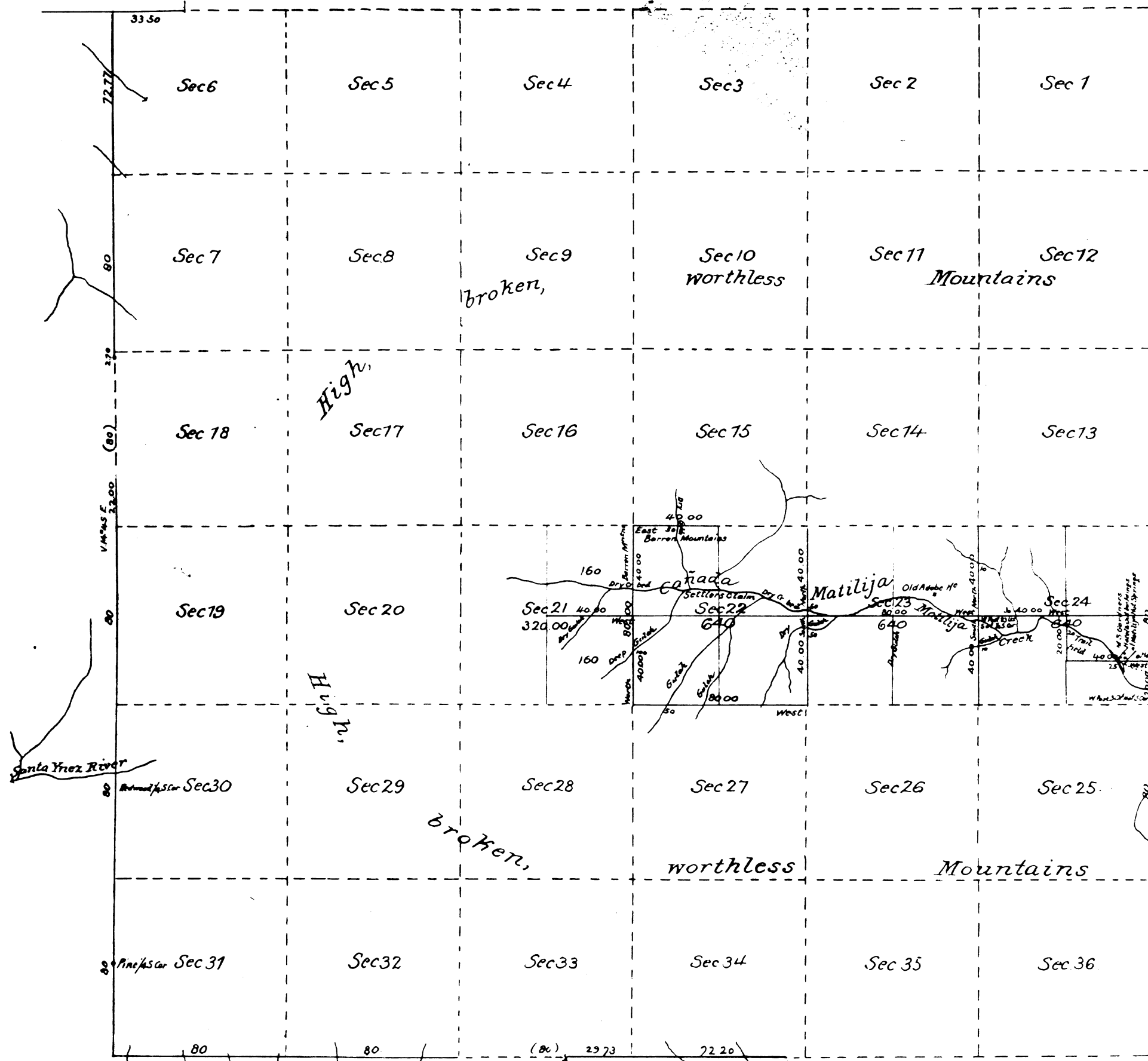


Township N^o 5 North, Range N^o 24 West, San Bernardino Meridian



Recd with Des Genl's letter of Feb 3, 1879

Aggregate Area of Public land surveyed 224000 Acres
 Estimated Area of unsurveyed Mountain Land 20450 00
 Aggregate 22690 00

Note, The lines shaded red are represented by Des Sur Norway as passing over Mountainous land heavily timbered.

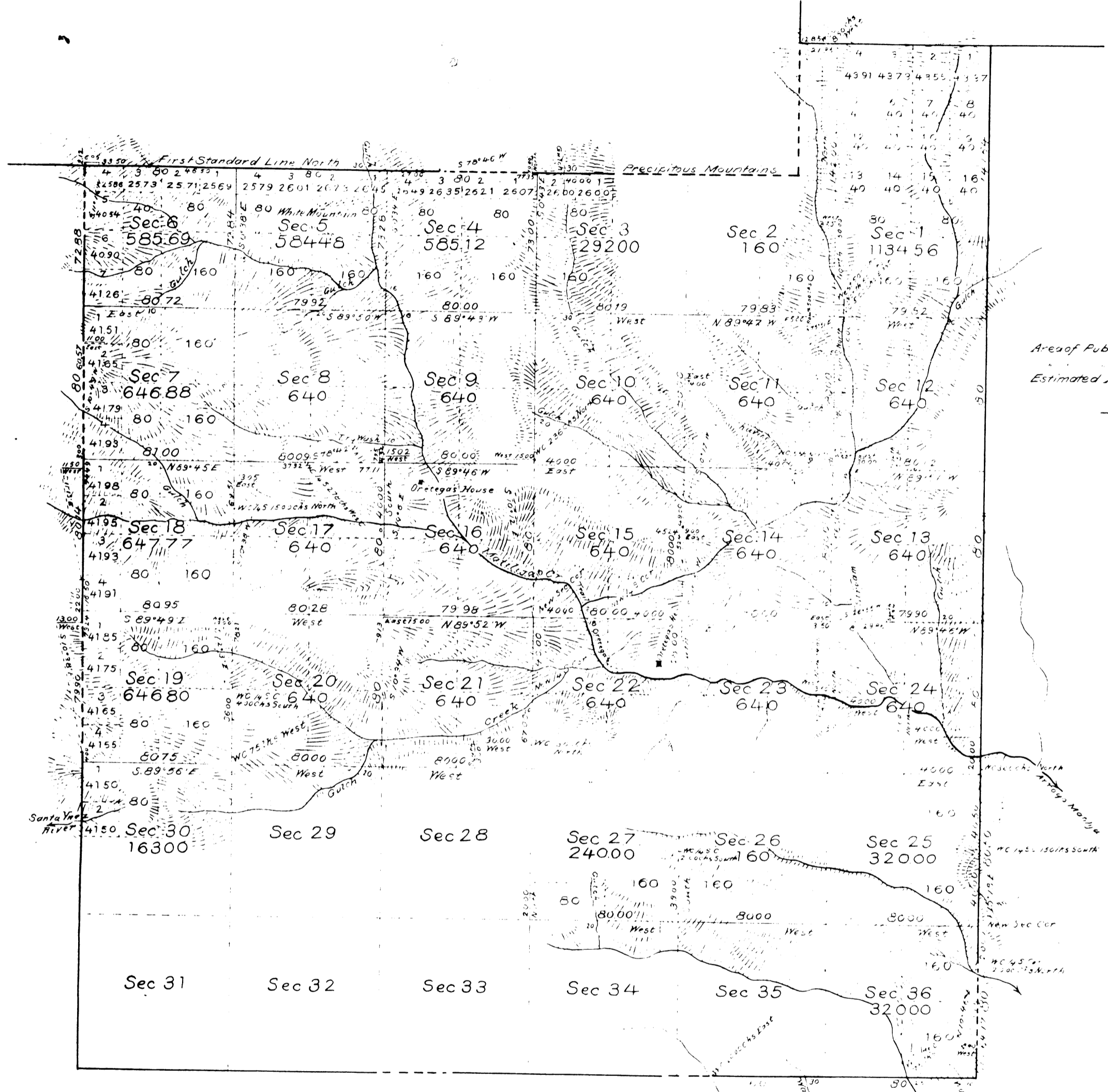
Subdivision lines run with a Variation of 14° East

Surveys Designated	By Whom Surveyed	Date of Contract	Amount Surveyed	When Surveyed
North West & South boundaries of Township	W H Norway	August 16 th 1873		1873
East boundary of Township	W H Norway	September 3 rd 1878	2 Miles 000 th 000 th	1878
Sec 8 & legal Subdivision Lines: not shaded red			2 - 60 - 00	1878
			4 - 40 - 00	October 3 rd 1878

The above Map of Township N^o 5 North of Range N^o 24 West of San Bernardino Meridian is drawn conformable to the field notes of the surveys thereof on file in this office, which have been examined and approved Surveyor General's Office, San Francisco California February 1st 1879

Thos Wagner
 Sur Gen Cal

Township N° 5 North, Range N° 24 West, San Bernardino Meridian.



E. H. H. V.
D.
B.

Area of Public Land previously surveyed. 2,240.00 Acres
 Surveyed by G. W. Pearson 13,846.30
 Estimated Area of unsurveyed Mountain Land 6,483.32
Aggregate Area of Township 22,569.62

Surveys Designated	By Whom Surveyed	Date of Contract	Amount of Surveys	When Surveyed	When Done
For Exhibit of Lines previously surveyed, see Map of this Township approved February 13 th 1893					
E Bdy of Secs 25 & 26	G. W. Pearson	October 26 th 1892	2.00	1892	
Part of E Bdy of Sec 24 resurr.			0.15		
N & W Township			46.28		
NW 1/4 Edy of New			8.44		
Section Lines resurr New			3.55		
Connecting Line on N Bdy.			0.21	July 1 st 1893	

Signature Map of Township N° 5 North, Range N° 24 West, San Bernardino Meridian, is hereby confirmed to the field notes of the surveys thereof, in accordance with the provisions of the Act of Congress, approved March 3rd 1878, and the Act of Congress, approved March 3rd 1893, in California.
 December 21, 1893

[Signature]
 U.S. Survey Gen'l. Corp.