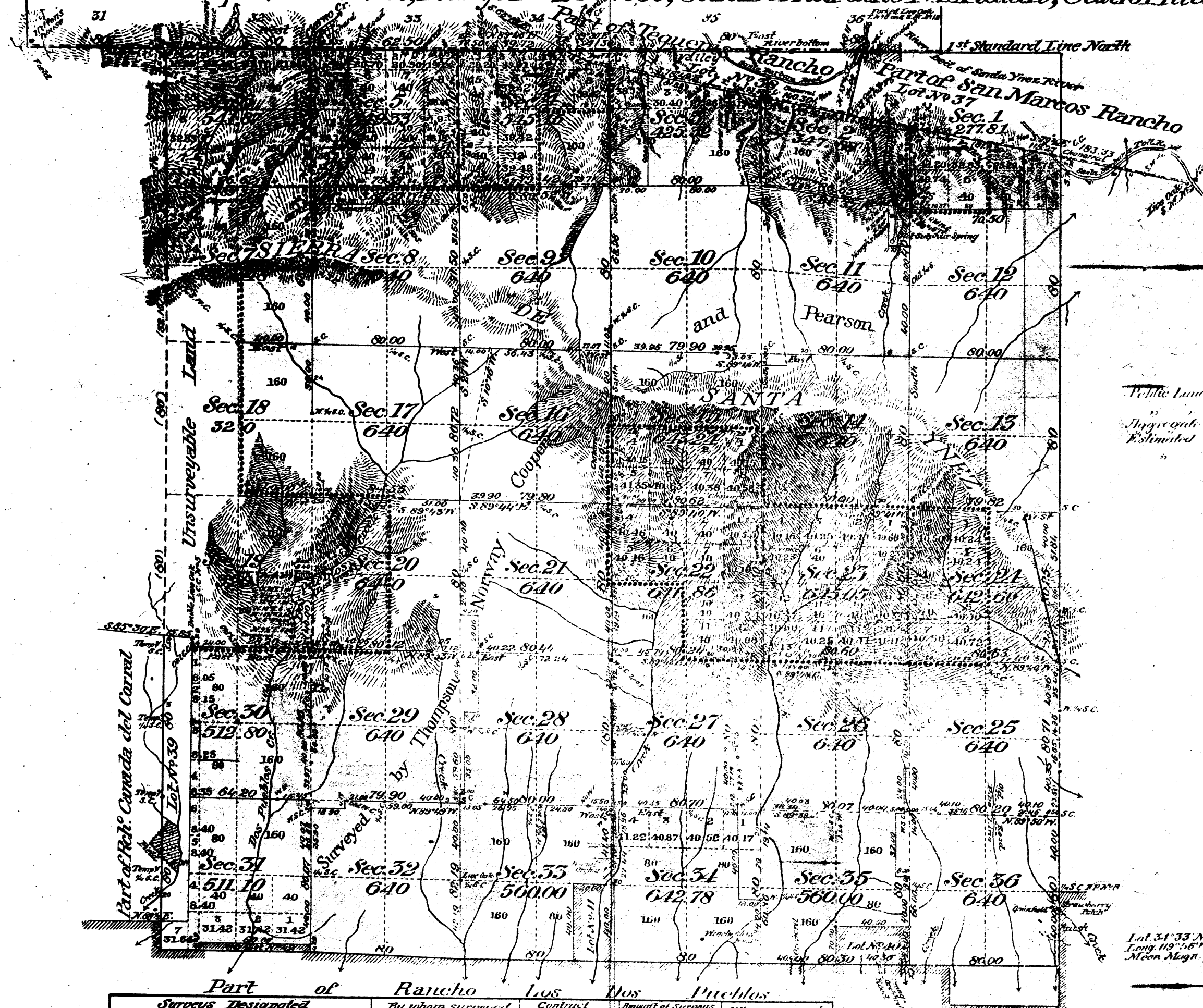


Township N^o 5 North, Range N^o 29 West, San Bernardino Meridian, California.



Public Land previously surveyed 1,527.92 Acres
 " surveyed by Perrin 1,050.25 " 2,578.17 Acres
 Aggregate Area of Public Land surveyed 2,578.17 " 2,578.17 "
 Estimated " Lots N^o 37, 38, 39, 40, 41, 42 (Private Grants) 935.17 "
 " unsurveyed Mountain Land 745.00 "
 Aggregate 2,213.17 " 2,213.17 "

Lat. 34° 33' N. A true point on 1st Standard North
 Long. 117° 56' W. 17th Sec. 10, Range 29, Twp. 5 N. 29 W.
 Mean Magn. North 11° 58' East.

Part of Rancho	By whom surveyed	Quantity	When surveyed
Lines previously surveyed exhibited on Map approved December 27 th 1893			
Part of Thompson's Rancho resurveyed	J. H. Clark	333 17.5 18 1893	
" " " " " "	Geo. H. Perrin	128 Apr. 9. 1896	
" " " " " "	"	"	
" " " " " "	"	"	
" " " " " "	"	"	
Connecting lines	"	"	
Part of 1 st Standard North	Geo. H. Perrin	Sec. 1st July 1896	June 20. 1896
Thompson's Rancho resurveyed	"	"	1896
" " " " " "	"	"	
San Marcos " " "	"	"	
Connecting line	"	"	July 17. 1896

The above Map of Township N^o 5 North, Range N^o 29 West, San Bernardino Meridian, California, is strictly conformable to the field notes of the surveys thereof, and the office which have been examined and approved.
 U.S. Surveyor General's Office,
 San Francisco, California.
 November 10th 1896

W.S. ...
 U.S. Surv. Gen'l. Cal.