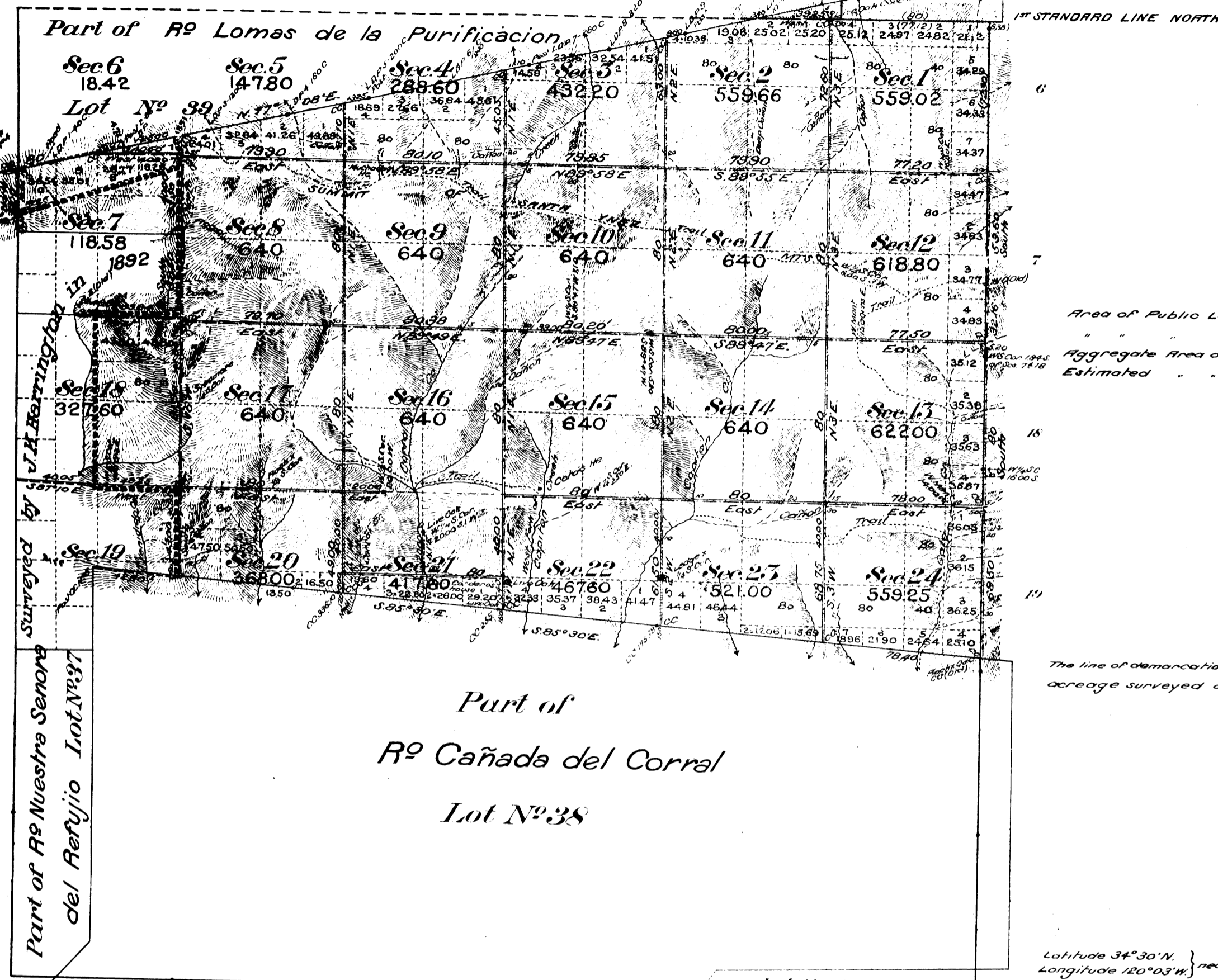


Township N^o 5 North, Range N^o 30 West, San Bernardino Meridian, California.



Area of Public Land previously surveyed 1,321.22 Acres.
 " " " surveyed by Sichter 11,146.13 "
 Aggregate Area of Public Land Surveyed 12,467.35 Acres
 Estimated " Private Grants 10,036.00 "
 Aggregate 22,493.35 "

The line of demarcation between the areas previously counted in total acreage surveyed and the new surveys is indicated thus -----

Latitude 34° 30' N. } near 1/4 Sec Cor. between Secs. 19 and 20
 Longitude 120° 03' W. }
 Mean Magn. Declⁿ 15° 00' E

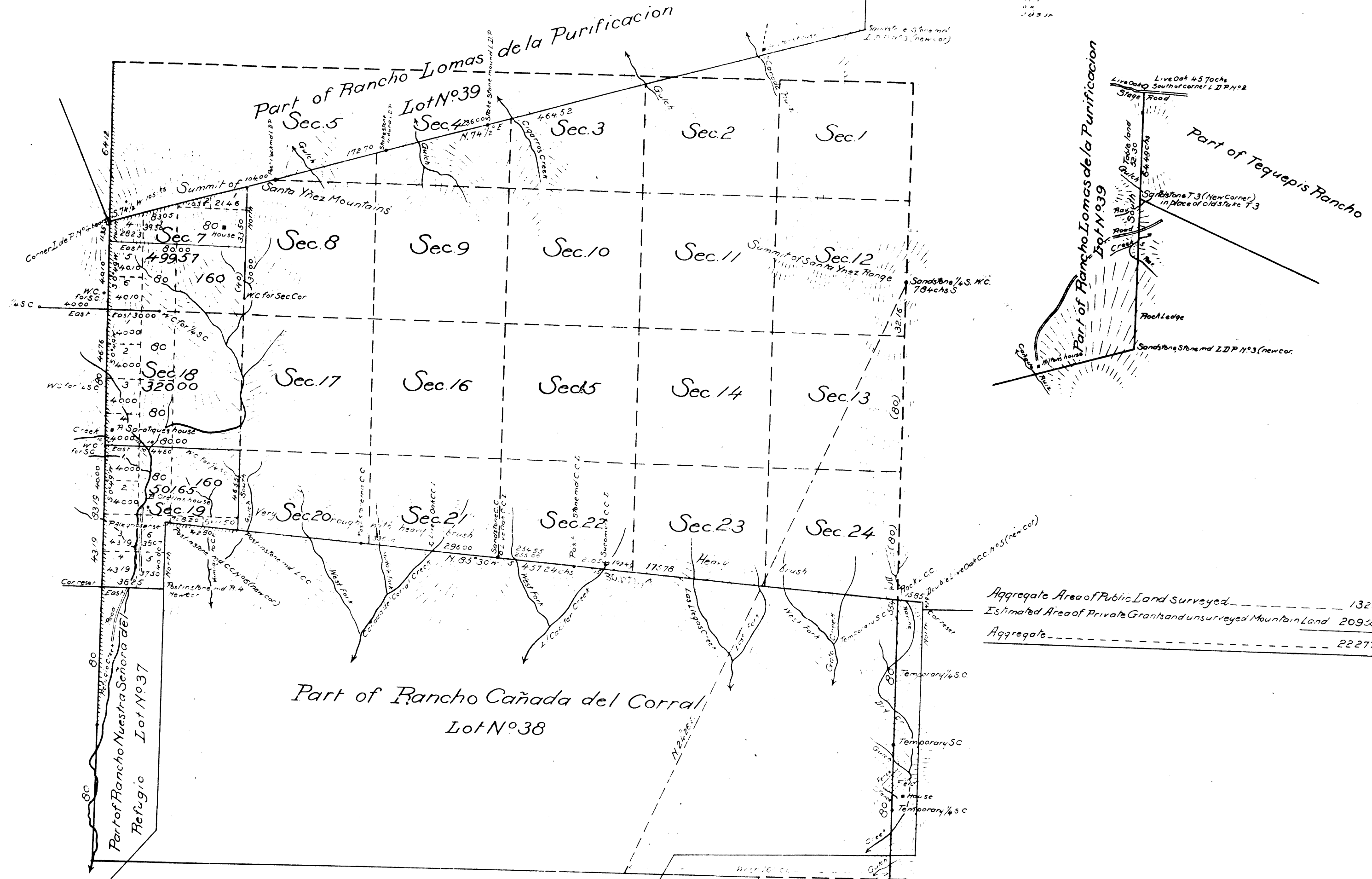
Surveys Designed	By whom surveyed	Date	Cont. Sects.	Cont. Acres	When Surveyed
Lines previously surveyed exhibited on Map approved April 29, 1893					
South Bay, Sec. 31 T. 6 N. R. 29 W.	Geo. H. Perrin	129 April 9, 1896			1896
" " of R ^o Lomas de la Purificacion	"	"			1896
Part of S. Bay	Re-Surveyed William H. Sichter	170 March 23, 1901	1	00	00
First Standard Line North, New	"	"	0	39	25
Part of N. Bay of R ^o Cañada del Corral, Re-Surveyed	"	"	0	42	80
" West Bay of Township, Re-Surveyed	"	"	0	30	00
" East	"	"	0	53	60
" New	"	"	2	21	66
Section Lines, Re-Surveyed	"	"	2	26	80
" and Legal Subdivisions, New	"	"	31	32	43
Connecting Lines	"	"	2	42	90

The above Map of Township N^o 5 North, Range N^o 30 West, San Bernardino Meridian, California, is strictly conformable to the field notes of the surveys thereof, on file in this Office, which have been examined and approved.
 U.S. Surveyor-General Office,
 San Francisco, California.
 June 12, 1902

W. J. Graham
 U.S. Surveyor-General for California.

Township N°5 North Range N°30 West San Bernardino Meridian

A P
1893



Aggregate Area of Public Land Surveyed 132,122 acres
 Estimated Area of Private Grants and unsurveyed Mountain Land 209,565
 Aggregate 341,687

Part of Rancho Cañada del Corral
 Lot N°38

Rancho Los dos Pueblos
 Lot N°40

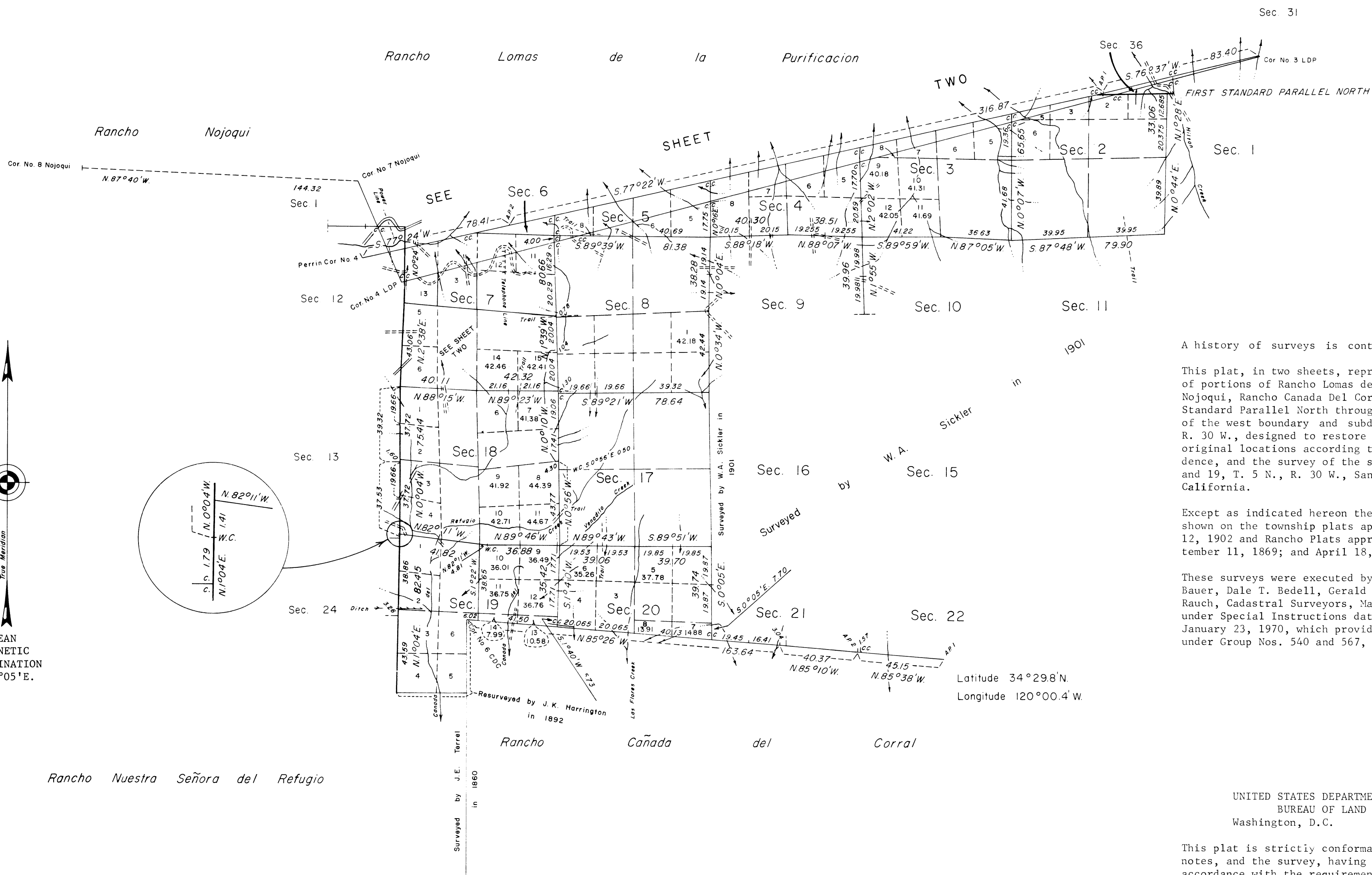
Surveys Designated	By Whom Surveyed	Date of Contract	Acres Surveyed	Acres Reserved	Acres Total
West Boundary of Township	H. W. Harris	October 2, 1853			
Part of W. Boundary of Tequepis	W. H. Harris	February 11, 1854			1873
Boundaries of Lot N°37	J. L. Ferris	First August, 1850			1867
38		November, 1850			1840
39	H. W. Harris	September 28, 1853			1854
40	G. H. Thompson	December 1, 1876			1071
East Boundary of Township shaded (new)	T. K. Harrington	December 31, 1890	4 32 15		1891
West			2 54 64		1851
Section lines dotted, resurveyed			3 40 11		1851
shaded (new)			3 60 13		1852
Private Grant lines dotted, resurveyed			4 11 60		1852
Connecting lines shaded thus			1 47 50		1852

The above map of Township N°5 North, Range N°30 West, San Bernardino Meridian is submitted to the field notes of the surveys thereof on file in this office, which have been examined and approved.
 Surveyor General's Office
 San Francisco Cal. Faria
 April 25 - 1893

[Signature]
 Survey Genl. Co.

TOWNSHIP 5 NORTH, RANGE 30 WEST, OF THE SAN BERNARDINO MERIDIAN, CALIFORNIA.

DEPENDENT RESURVEY AND SUBDIVISION OF SECTIONS 7 AND 19



A history of surveys is contained in the field notes.

This plat, in two sheets, represents a dependent resurvey of portions of Rancho Lomas de la Purificacion, Rancho Nojoqui, Rancho Canada Del Corral, a portion of the First Standard Parallel North through Range 30 West, portions of the west boundary and subdivisional lines, T. 5 N., R. 30 W., designed to restore the corners in their true original locations according to the best available evidence, and the survey of the subdivision of sections 7 and 19, T. 5 N., R. 30 W., San Bernardino Meridian, California.

Except as indicated hereon the lottings and areas are as shown on the township plats approved April 28, 1893, June 12, 1902 and Rancho Plats approved January 7, 1861; September 11, 1869; and April 18, 1871.

These surveys were executed by John M. Jelley, Daniel R. Bauer, Dale T. Bedell, Gerald E. Chittick, and Albert M. Rauch, Cadastral Surveyors, March 12, 1968 to May 1, 1970, under Special Instructions dated September 2, 1966 and January 23, 1970, which provide for surveys included under Group Nos. 540 and 567, California.

Latitude 34° 29' 8" N.
Longitude 120° 00' 4" W.

UNITED STATES DEPARTMENT OF THE INTERIOR
BUREAU OF LAND MANAGEMENT
Washington, D.C. August 17, 1977

This plat is strictly conformable to the approved field notes, and the survey, having been correctly executed in accordance with the requirements of law and the regulations of this Bureau, is hereby accepted.

For the Director

Bernard W. Hoopes
Chief, Division of Cadastral Survey

