

Township N°5 North, Range N°31 West, San Bernardino Meridian.



Aggregate Area of Public Land surveyed 8342.75 Acres
 Estimated of Private Grants & unsurveyed Mountain Land 13,000.00 "
Aggregate 21,342.75 "

Subdivision lines run at a variation of 14° 10' East

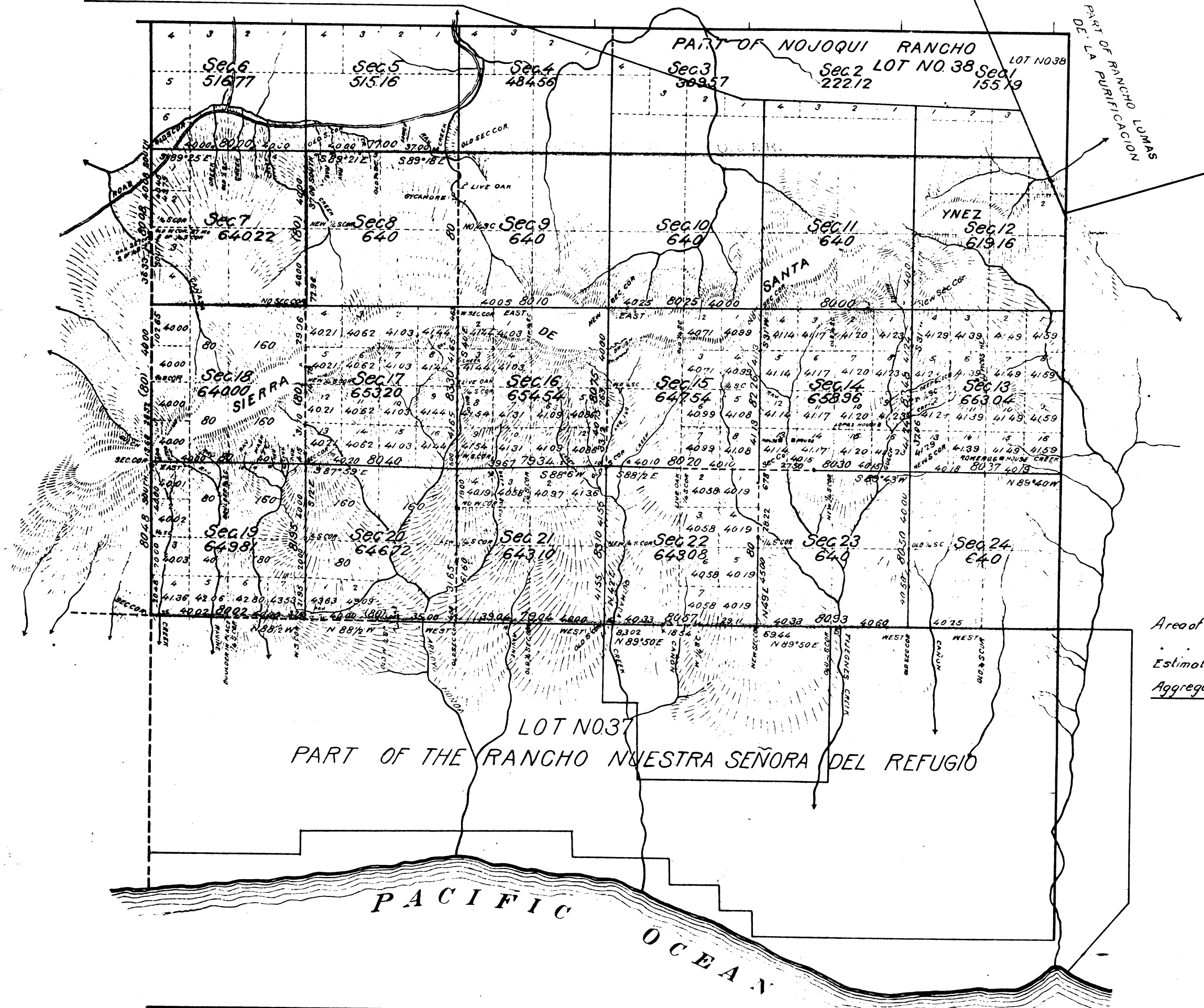
Surveys Designated	By whom surveyed	Date of contract	Amount of Survey	When surveyed
Township and offset lines - red	W. W. Norris	July 3 rd 1854		1854
East boundary of township - blue		October 2 nd 1853		1854
East of North boundary of lot - blue		December 8 th 1857		1858
Boundaries of lot N° 38		Instructions January 23 rd 1858		1858
" " " 39		September 28 th 1858		1858
" " " 37	J. L. Tennil	August 1 st 1860		1860
Part of township lines, green part - red	W. H. Norway	February 1 st 1873	6,912 70 00 50	1873
Part of township lines, blue part - red			1 30 00 00	1873
Part of boundaries of lot N° 38 39 and green part - red			3 27 15	1873
Part of Section Lines			25 02 84	March 25 th 1873

The above Map of Fractional Township N°5 North of Range N°31 West of San Bernardino Meridian is strictly conformable to the field notes of the Surveys thereof on file in this office which have been examined and approved
 Surveyor General's Office
 San Francisco, California
 April 29th 1873

L. O. Harshberg
 Surv. Gen. Cal.

Township No 5 North Range No 31 West San Bernardino Meridian.

TAB. 755



Area of Public land previously surveyed 8,342.75 acres
 . surveyed by Geo W Pearson ... 5,459.99 .
 Estimated Area of Private Grants 7,540.01 .
 Aggregate Area of Township 21,342.75 .

Surveys Designated	By Whom Surveyed	Date of Contract	Amount of Survey	When Surveyed	Mean Declination
FOR EXHIBIT OF SURVEYS PREVIOUSLY EXECUTED SEE MAP OF THIS TOWNSHIP APPROVED APRIL 29, 1873					
Partial East boundary of Tp resurvey	J K Harrington	December 31, 1890		1891	
Partial Box of Pt. Lomas de la Purificacion resurvey				1891	
Partial West boundary of Tp. new and resurvey	Geo W Pearson	October 26, 1892	542.24	1893	
Partial North boundary of Lot N 32 resurvey			5.16	1893	
Part of Section lines, resurvey			12.63	1893	15° 45' E.
Part of Section lines, new survey			10.69	April 21, 1893	

The above map of Township No 5 North, Range No 31 West, San Bernardino Meridian is strictly conformable to the field notes of the surveys thereof on file in this office, and has been examined and approved
 Surveyor General's Office
 San Francisco California
 December 21, 1893

J. W. Pearson

Com. 1893