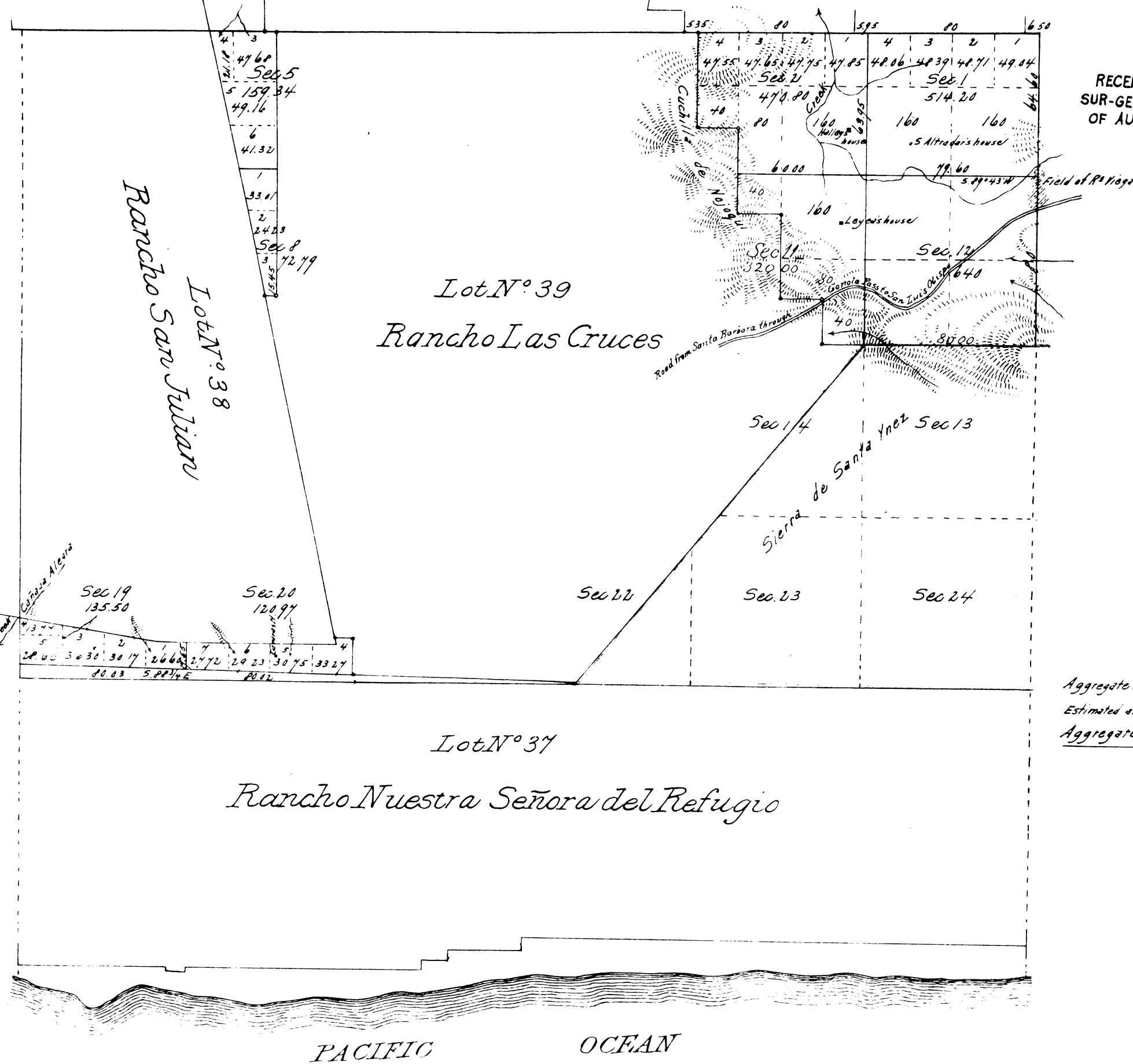


Township N^o 5 North Range N^o 32 West San Bernardino M^o



RECEIVED WITH
SUR-GEN'L'S LETTER
OF AUG 22 1883

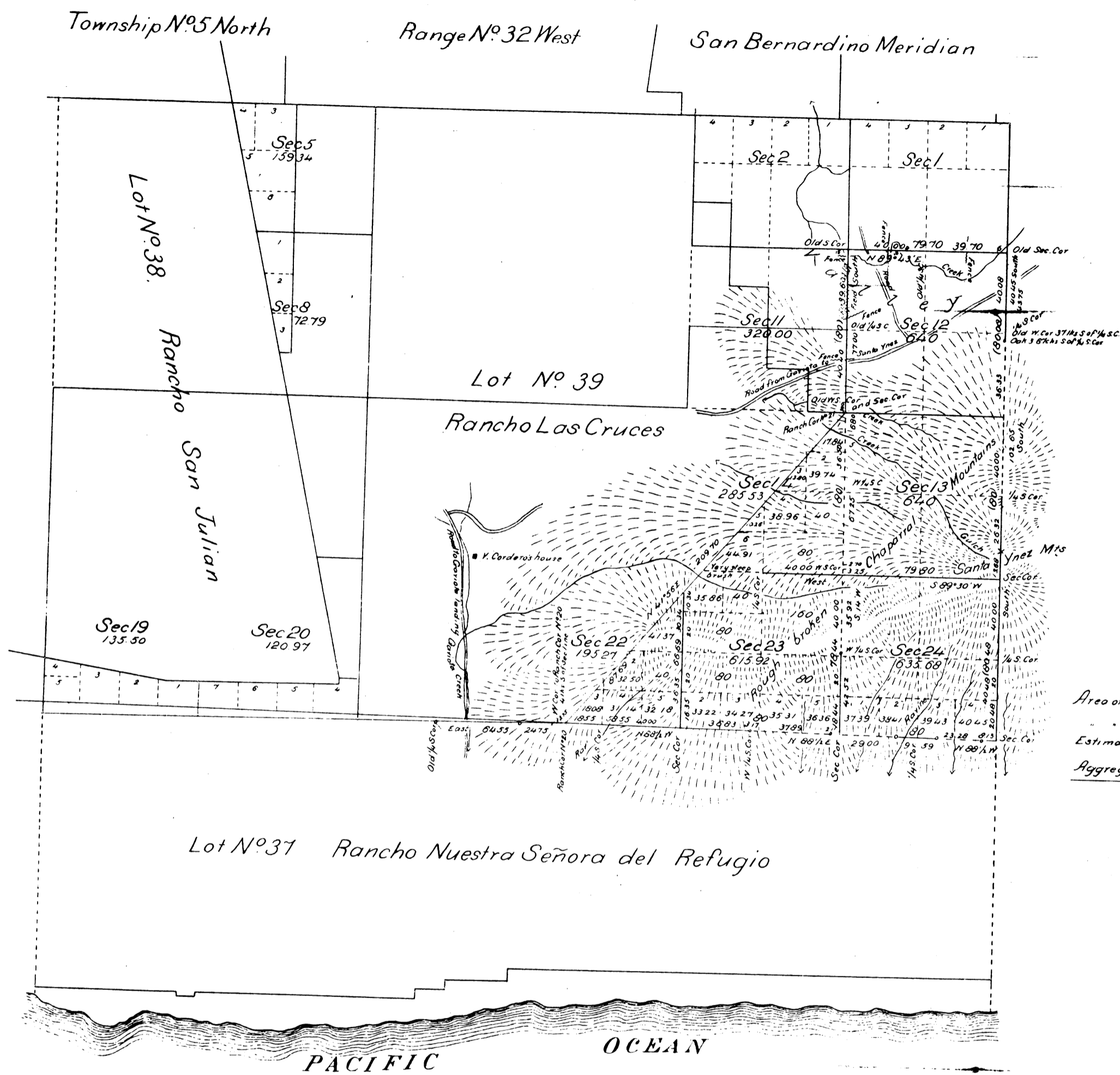
Aggregate Area of Public Land surveyed 2433.42 acres
 Estimated area of Private Grants and unsurveyed Public Land 1922.58
 Aggregate 21655.01

Surveys Designated	By Whom Surveyed	Date of Contract	Amount of Surveys	When Surveyed
Lot N ^o 39 Private Grant, Amador's confirmation of Rancho Las Cruces See instructions of General and Office Memo 23 1883				

The above map of Township N^o 5 North Range N^o 32 West San Bernardino Meridian is correctly compiled from the examined and approved field notes of official surveyors in this office.
 Surveyor General's Office
 San Francisco, California
 June 4th 1883

W. H. Brown
 Sur. Gen. Cal.

N. 6 M.
E. 7
T. 5 N.



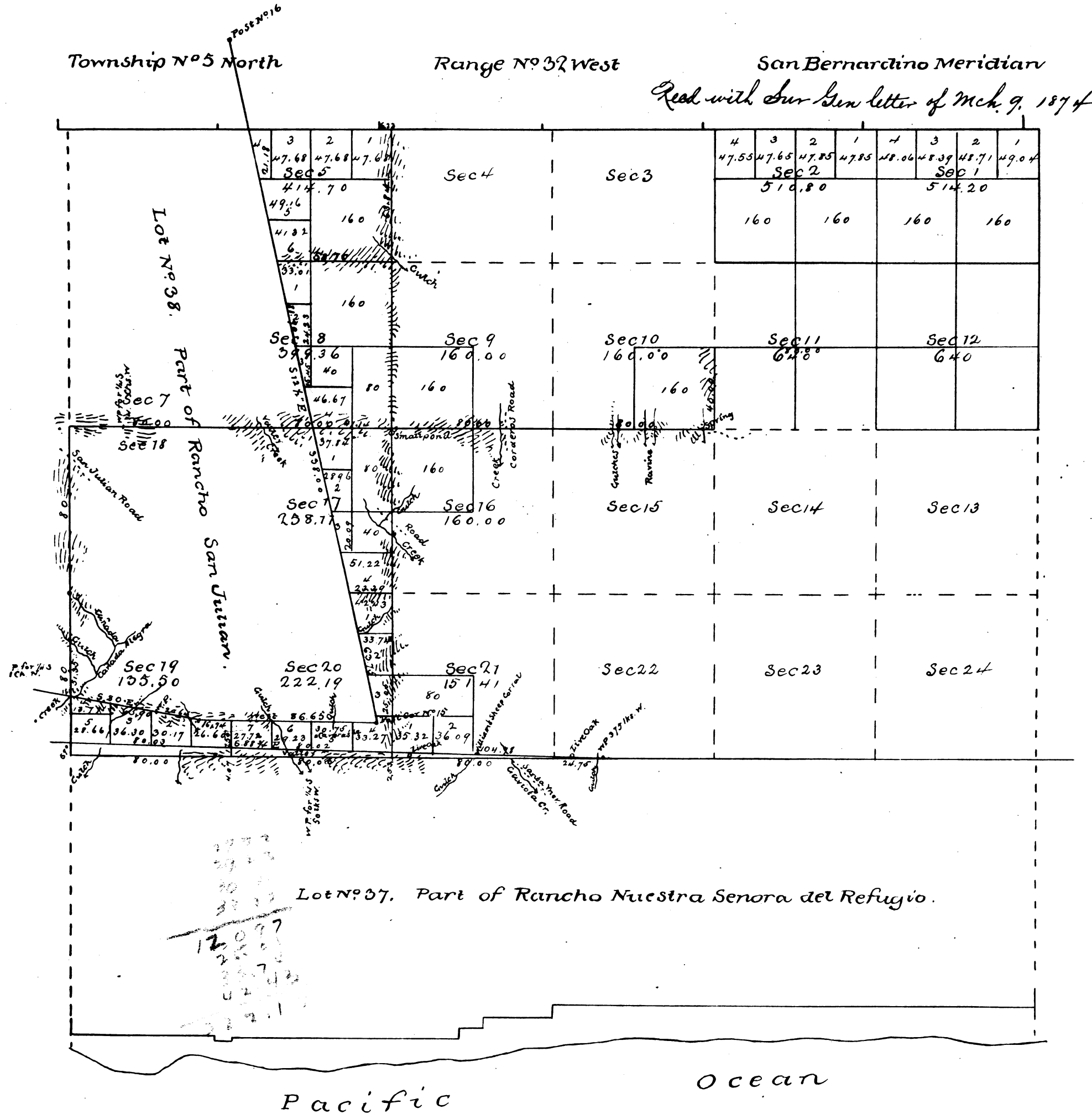
Area of Public land previously surveyed	2433.42 acres
Surveyed by G. W. Pearson	2371.30
Estimated area of Private Grants	15,650.28
Aggregate Area of Township	20,655.00

Surreys Designated	By Whom Surveyed	Date of Contract	Amount of Survey (Acres)	When Surveyed	Mean Declination
For exhibit of surreys previously executed	sec. 19, 20 of this township	approved February 18, 1874 and June 7, 1893			
Private Grant lines resurveyed	Geo. W. Pearson	October 20, 1898	6 12 80	1893	
Part of East side of Tp resurveyed	"	"	1 00 00	1893	
Part of East side of Tp new survey	"	"	2 00 48	1893	15° 45' E
Section lines resurveyed	"	"	1 79 70	1893	
Section lines new survey	"	"	4 24 93	April 24, 1893	

This map of Township No. 5 North Range No. 32 West San Bernardino Meridian is strictly conformable to the field notes of the surreys thereon file in this office which have been examined and approved
 Surveyor General's Office
 San Francisco Cal. Bernia
 December 21, 1893

Geo. W. Pearson
 Surv. Genl. Cal.

W. H. Norway



Filed March 3rd 1874.

Public Land surveyed under previous Contract	1823.00 Acres
" " " present	2541.27 "
Aggregate Area of Public Land	4366.27 Acres
Estimated " Private Grants and Unsurveyed Public Land	16288.73 "
Aggregate	20655.00 "

Line run through Sec. 11, changed as Section lines

Paid Report 25661

Variation reported by Norway 14°10'E.

Surveys Designated	By whom Surveyed	Date of Contract	Amount of Surveys	When Surveyed
Township lines not colored	W. H. Norway	December 15 th 1873	2 mts 00chs 00ths	1874
Section " " "	"	"	10 " 65 " 25 "	1874
Ranch boundaries colored blue (re-surveyed)	"	"	9 " 33 " 38 "	January 14 th 1874

The above Map of Township No 5 North, Range No 32 West, San Bernardino Meridian is strictly conformable to the field notes of the Surveys thereof, on file in this Office which have been examined and approved
 Surveyor General's Office
 San Francisco California
 February 16th 1874

*Posted in Tract Book
 June 9, 1874
 Turner.*

W. H. Norway
 Surv. Gen. Cal.