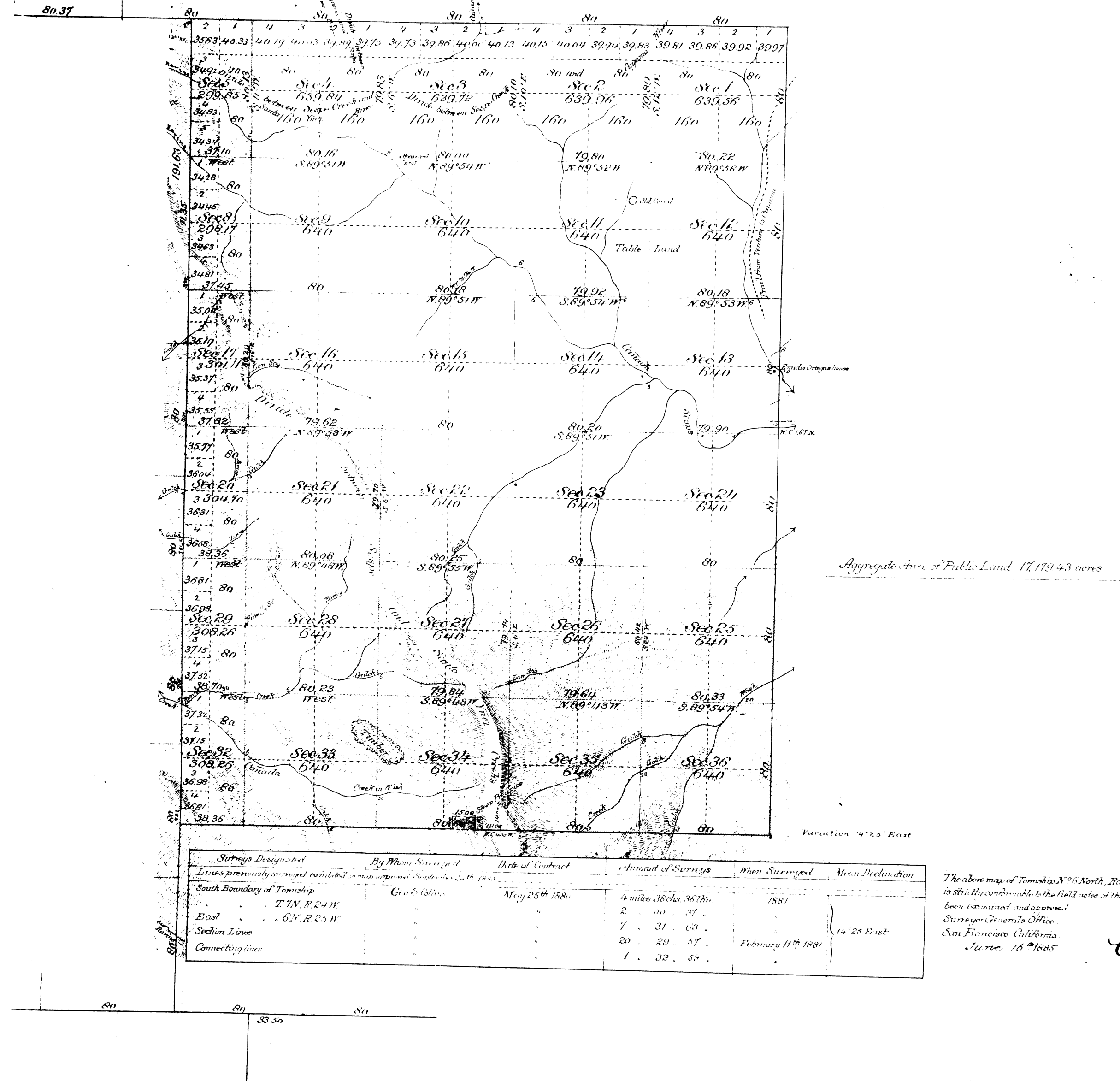


Tomship N^o 6 North Range N^o 2 West San Bernardino Meridian



Aggregate Area of Public Land 17,081.43 acres

Variation 4° 25' East

Survey Designated	By Whom Surveyed	Date of Contract	Amount of Survey	When Surveyed	Mean Declination
Lines previously surveyed within a mineral boundary, 1881	Geo. S. Collins	May 25 th 1880	4 miles 38 cks. 36 fms.	1881	14° 25' East
South Boundary of Township	T. N. R. 24 W.		2 . 00 . 37 .		
East	E. N. R. 25 W.		7 . 31 . 03 .		
Section Lines			20 . 29 . 57 .	February 11 th 1881	
Connecting line			1 . 32 . 54 .		

The above map of Tomship N^o 6 North, Range N^o 2 West, San Bernardino Meridian, is strictly conformable to the field notes of the surveys thereof on file in this office. Such have been examined and approved.

Surveyor General's Office,
San Francisco, California,
June 16th 1885

W. H. Brown
Surv. Genl. Cal.