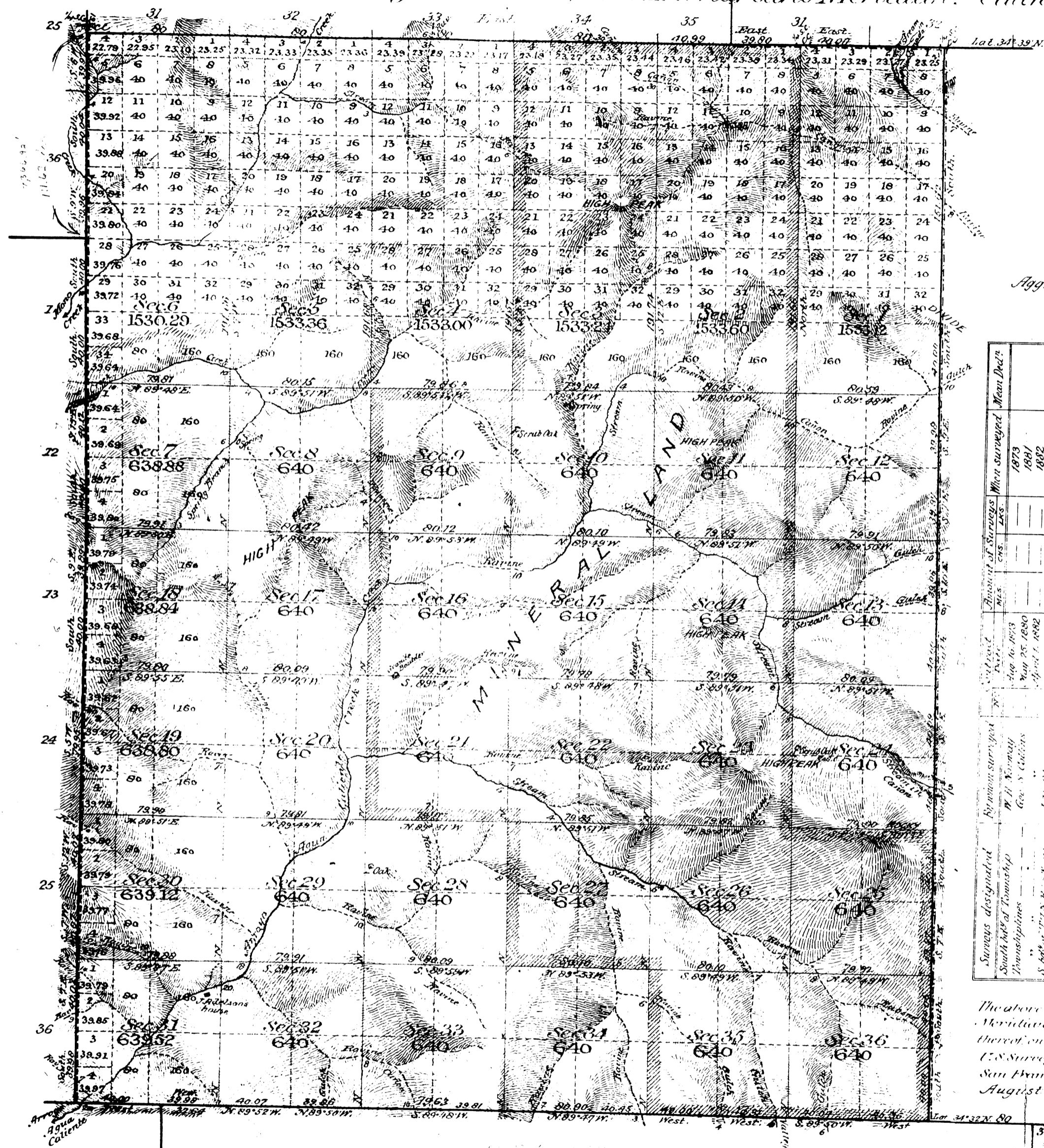


Township N^o 6 North, Range N^o 25 West, San Bernardino Meridian, California.



Aggregate Area of Public Land 28391.77 Acres.

Section	When surveyed	Mean Date
1	1873	1873 E.
2	1881	"
3	1882	"
4	1885	"
5	1885	"
6	1885	"
7	1885	"
8	1885	"
9	1885	"
10	1885	"
11	1885	"
12	1885	"
13	1885	"
14	1885	"
15	1885	"
16	1885	"
17	1885	"
18	1885	"
19	1885	"
20	1885	"
21	1885	"
22	1885	"
23	1885	"
24	1885	"
25	1885	"
26	1885	"
27	1885	"
28	1885	"
29	1885	"
30	1885	"
31	1885	"
32	1885	"
33	1885	"
34	1885	"
35	1885	"
36	1885	"

The above Map of Township N^o 6 North, Range N^o 25 West, San Bernardino Meridian, California, is strictly conformable to the field notes of the surveys thereof on file in this Office which have been examined and approved.
 U.S. Surveyor General's Office
 San Francisco, California.
 August 5th 1896

M.S. Green
 U.S. Survey Genl. Cal.