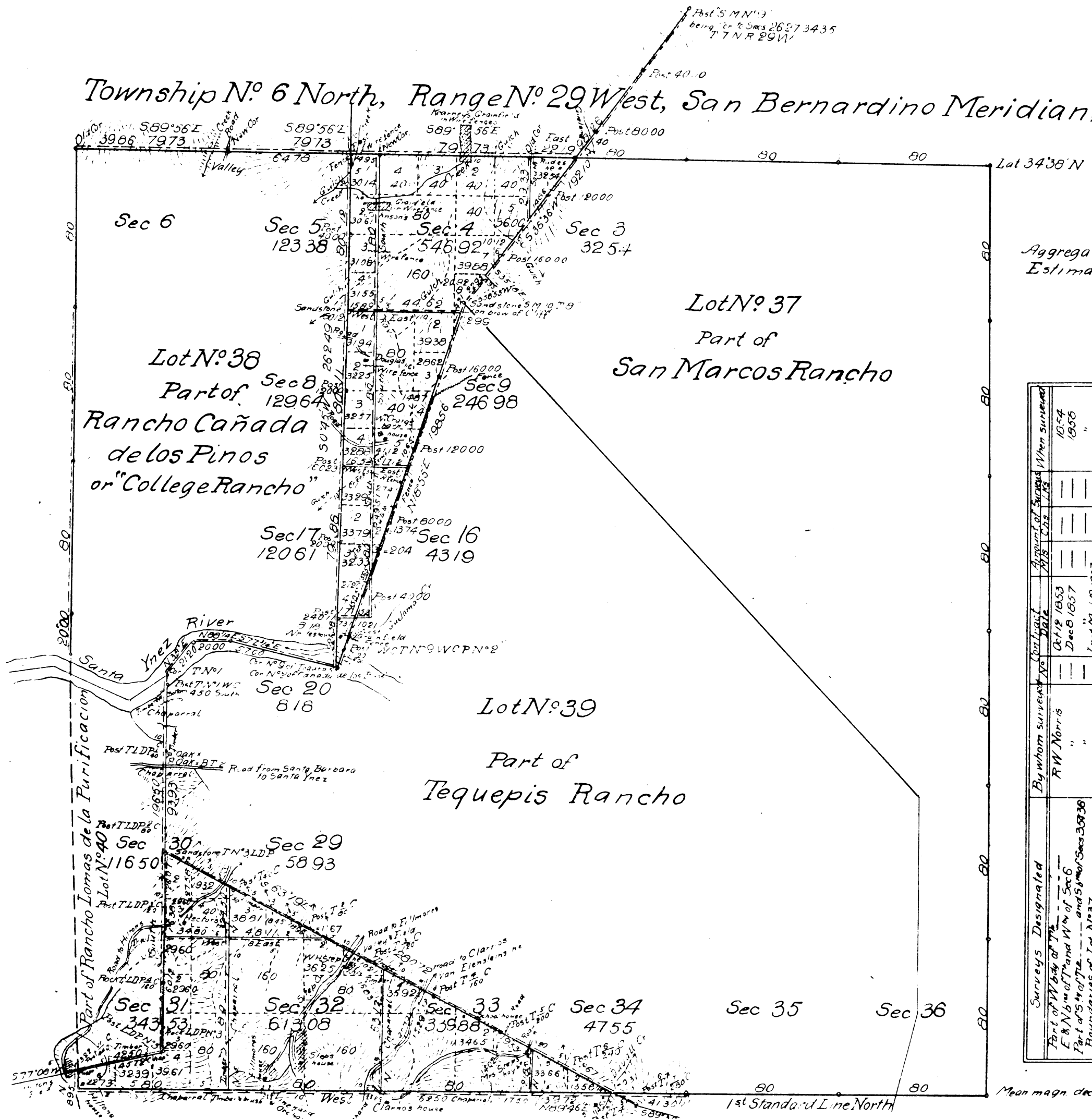


Township N° 6 North, Range N° 29 West, San Bernardino Meridian, California



Aggregate Area of Public Land 2770 91 Acres
Estimated " Private Grants 20269 09 "
Aggregate 23040 00 "

Surveys Designated	By whom surveyed	Date	Amount of Surveyed When surveyed
Part of N° 36 of Twp N° 6 North Range N° 29 West	R W Morris	Oct 19 1853	10 74
Part of N° 37 of Twp N° 6 North Range N° 29 West	"	Dec 8 1857	1856
Boundaries of Lot N° 37	"	Jan 17 1858	"
" " " " " "	"	Jan 23 1859	"
Part of N° 38 of Twp N° 6 North Range N° 29 West	Geo H Perini	Apr 19 1858	"
Part of N° 39 of Twp N° 6 North Range N° 29 West	"	335 Feb 18 1859	335
Part of N° 40 of Twp N° 6 North Range N° 29 West	Geo R Grier	"	9 57
Part of N° 41 of Twp N° 6 North Range N° 29 West	"	"	29 73
Part of N° 42 of Twp N° 6 North Range N° 29 West	"	"	15 01
Part of N° 43 of Twp N° 6 North Range N° 29 West	"	"	33 33

The above Map of Township N° 6 North Range N° 29 West San Bernardino Meridian California is strictly conformable to the field notes of the surveys thereof on file in this Office which have been examined and approved
U.S. Surveyor-General's Office
San Francisco, California
August 5th 1896
W. S. J. Co.
U.S. Surv. Cont. Co.

TOWNSHIP 6 NORTH, RANGE 29 WEST, OF THE SAN BERNARDINO MERIDIAN, CALIFORNIA.

ORIGINAL

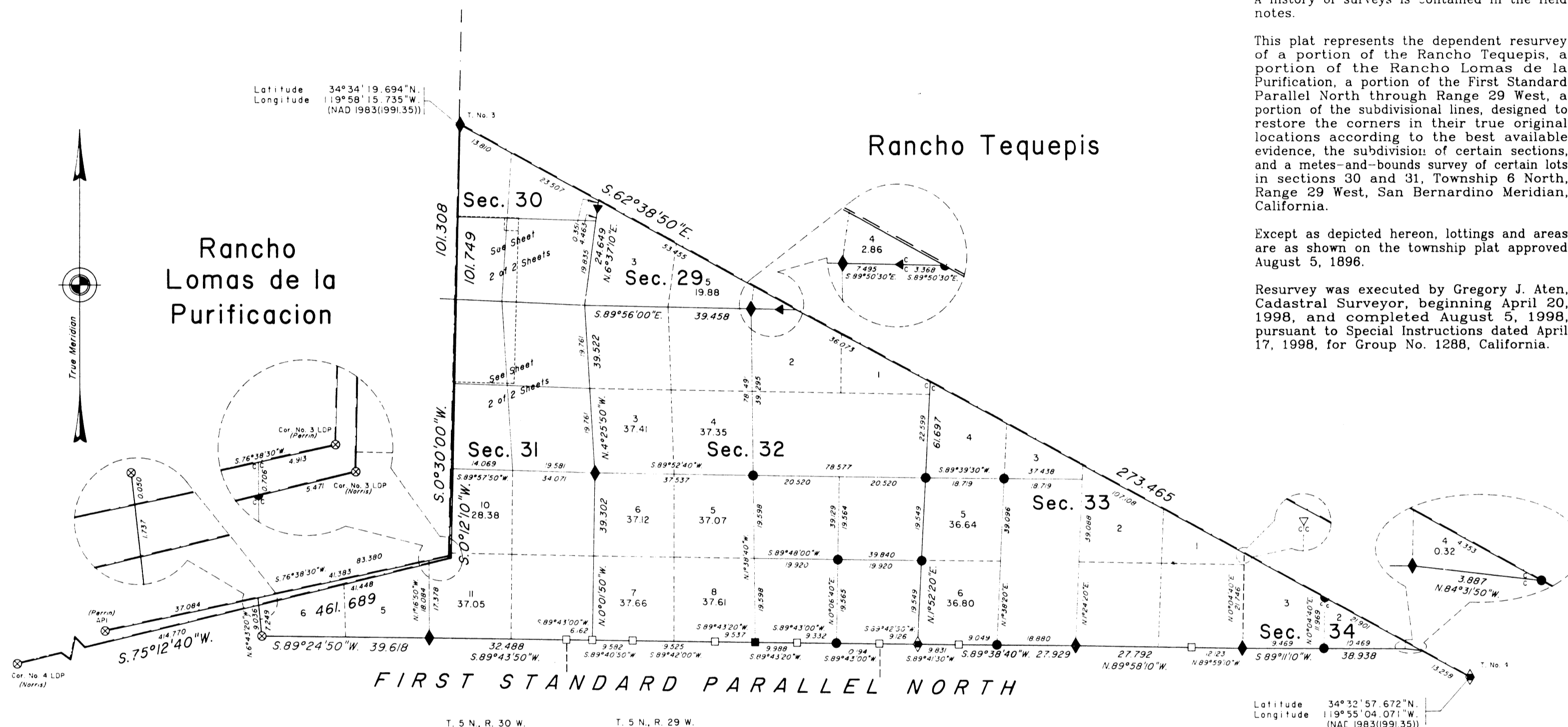
DEPENDENT RESURVEY, SUBDIVISION, AND METES-AND-BOUNDS SURVEY

A history of surveys is contained in the field notes.

This plat represents the dependent resurvey of a portion of the Rancho Tequepis, a portion of the Rancho Lomas de la Purificacion, a portion of the First Standard Parallel North through Range 29 West, a portion of the subdivisional lines, designed to restore the corners in their true original locations according to the best available evidence, the subdivision of certain sections, and a metes-and-bounds survey of certain lots in sections 30 and 31, Township 6 North, Range 29 West, San Bernardino Meridian, California.

Except as depicted hereon, lottings and areas are as shown on the township plat approved August 5, 1896.

Resurvey was executed by Gregory J. Aten, Cadastral Surveyor, beginning April 20, 1998, and completed August 5, 1998, pursuant to Special Instructions dated April 17, 1998, for Group No. 1288, California.

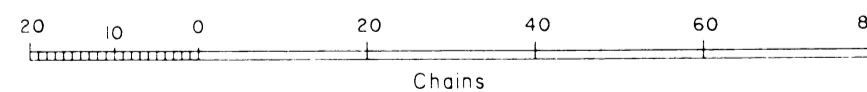


Latitude 34°34'19.694"N
Longitude 119°58'15.735"W
(NAD 1983(1991.35))

Latitude 34°32'57.672"N
Longitude 119°55'04.071"W
(NAD 1983(1991.35))

LEGEND

- W.W. Roy, 1960, R/S Bk 49, Pgs 82,83
- ◇ Original Evidence Recovered: Not Remonumented
- ◆ Original Evidence Recovered: Remonumented
- ◈ Original Position Perpetuated by Testimonial Evidence: Remonumented
- Local Evidence Recovered: Not Remonumented
- Local Evidence Recovered: Remonumented
- Position Determined and Monumented
- ⊗ GLO/BLM Monument
- Partial symbols represent corners for that side of line



UNITED STATES DEPARTMENT OF THE INTERIOR
BUREAU OF LAND MANAGEMENT
Sacramento, California

This plat, having been correctly prepared in accordance with the requirements of law and this Bureau, is hereby accepted.

For the Director

John F. Babin - January 7, 2000

Chief Cadastral Surveyor-California

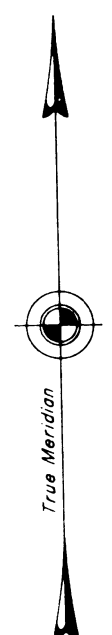
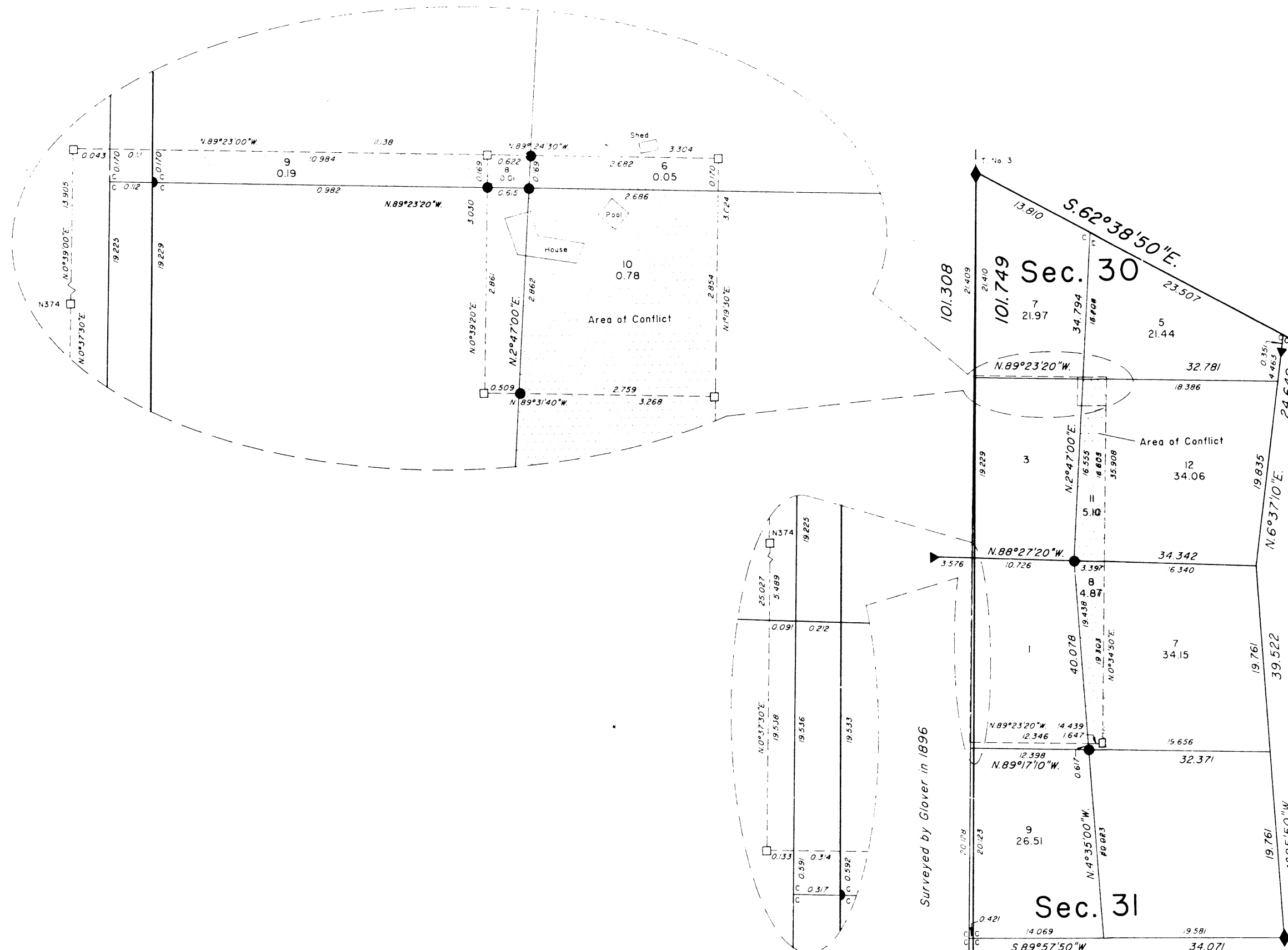
D.a.d.
GJA

TOWNSHIP 6 NORTH, RANGE 29 WEST, OF THE SAN BERNARDINO MERIDIAN, CALIFORNIA.

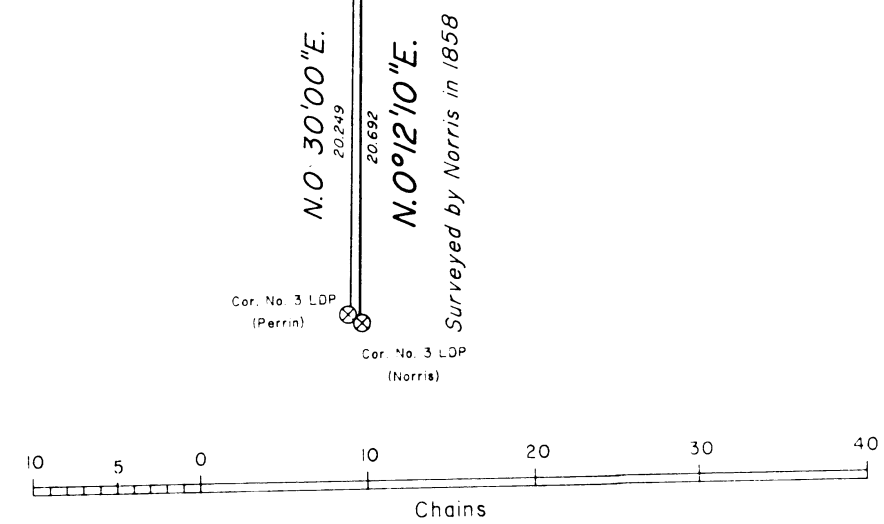
ORIGINAL

DEPENDENT RESURVEY, SUBDIVISION, AND METES-AND-BOUNDS SURVEY

Reference should be made to Sheet No. 1 for survey information.



- LEGEND**
- W.W. Ray, 1960, R/S Bk. 49 Pgs 82, 83
 - ◆ Original Evidence Recovered: Remonumented
 - Local Evidence Recovered: Not Remonumented
 - Local Evidence Recovered: Remonumented
 - Position Determined and Monumented
 - ⊗ GLO/BLM Monument
 - Partial symbols represent corners for that side of line



UNITED STATES DEPARTMENT OF THE INTERIOR
 BUREAU OF LAND MANAGEMENT
 Sacramento, California

This plat, having been correctly prepared in accordance with the requirements of law and this Bureau, is hereby accepted.

For the Director
June G. Pugh, January 7, 2000
 Chief Cadastral Surveyor-California

Dad
 GJA