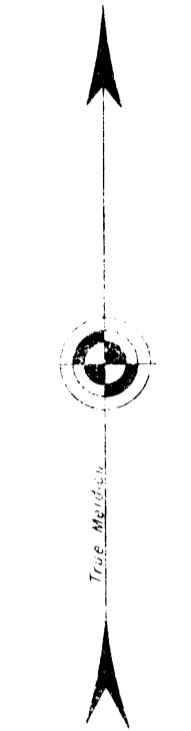


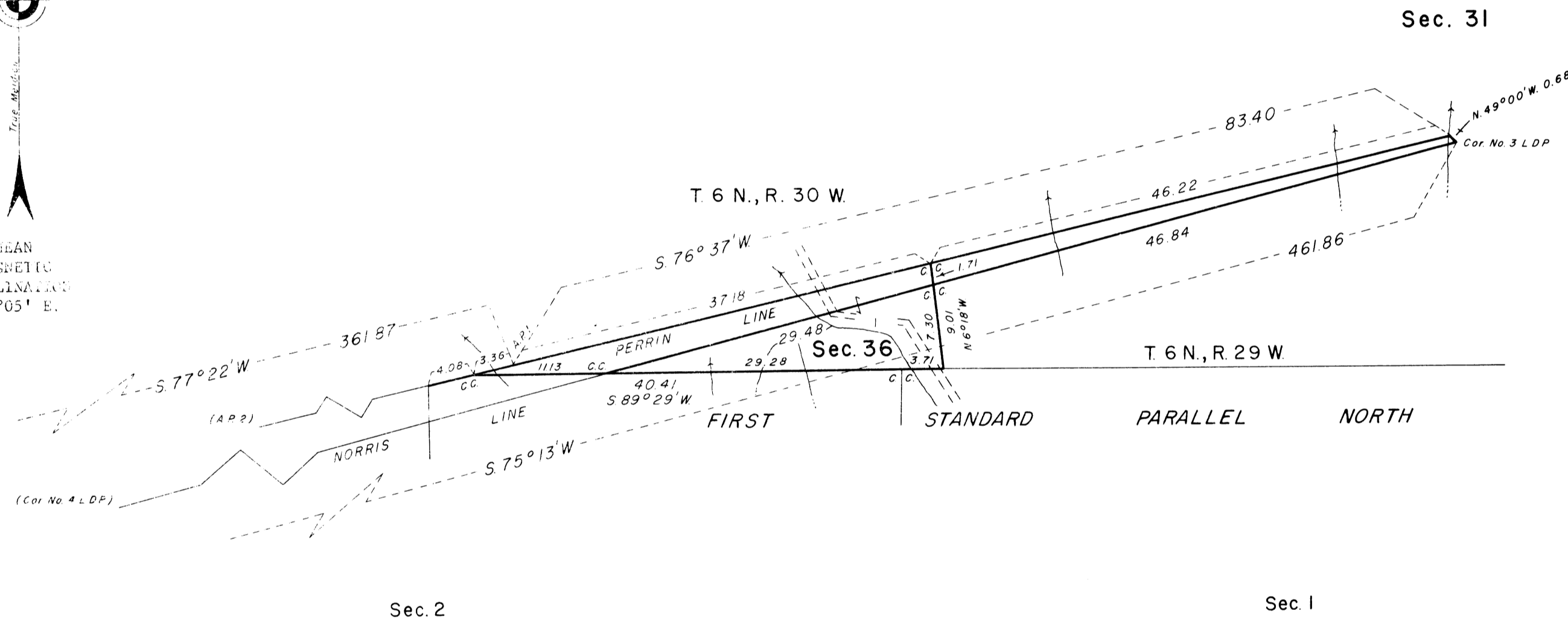
# TOWNSHIP 6 NORTH, RANGE 30 WEST, OF THE SAN BERNARDINO MERIDIAN, CALIFORNIA

## DEPENDENT RESURVEY

Rancho Lomas de la Purificacion



MEAN  
MAGNETIC  
DECLINATION  
16°05' E.



A history of surveys is contained in the field notes.

This plat represents a dependent resurvey of portions of Rancho Lomas de la Purificacion, a portion of the First Standard Parallel North through Range 30 West and a portion of the east boundary, designed to restore the corners in their true original locations according to the best available evidence.

The lottings and areas are as shown on the township plat approved June 12, 1902, and Rancho Plat approved April 18, 1871.

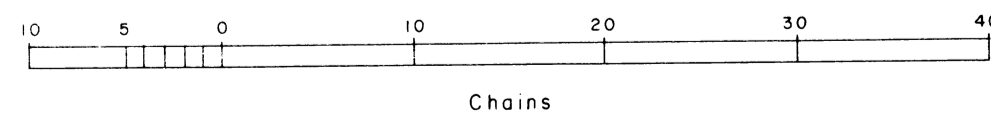
These surveys were executed by John M. Jelley, Daniel R. Bauer, Dale T. Bedell, Gerald E. Chittick and Albert M. Rauch, Cadastral Surveyors, March 12, 1968 to May 1, 1970, under Special Instructions dated September 2, 1966 and January 23, 1970, which provide for surveys included under Group Nos. 540 and 567, California.

UNITED STATES DEPARTMENT OF THE INTERIOR  
BUREAU OF LAND MANAGEMENT  
Washington, D.C. August 17, 1977

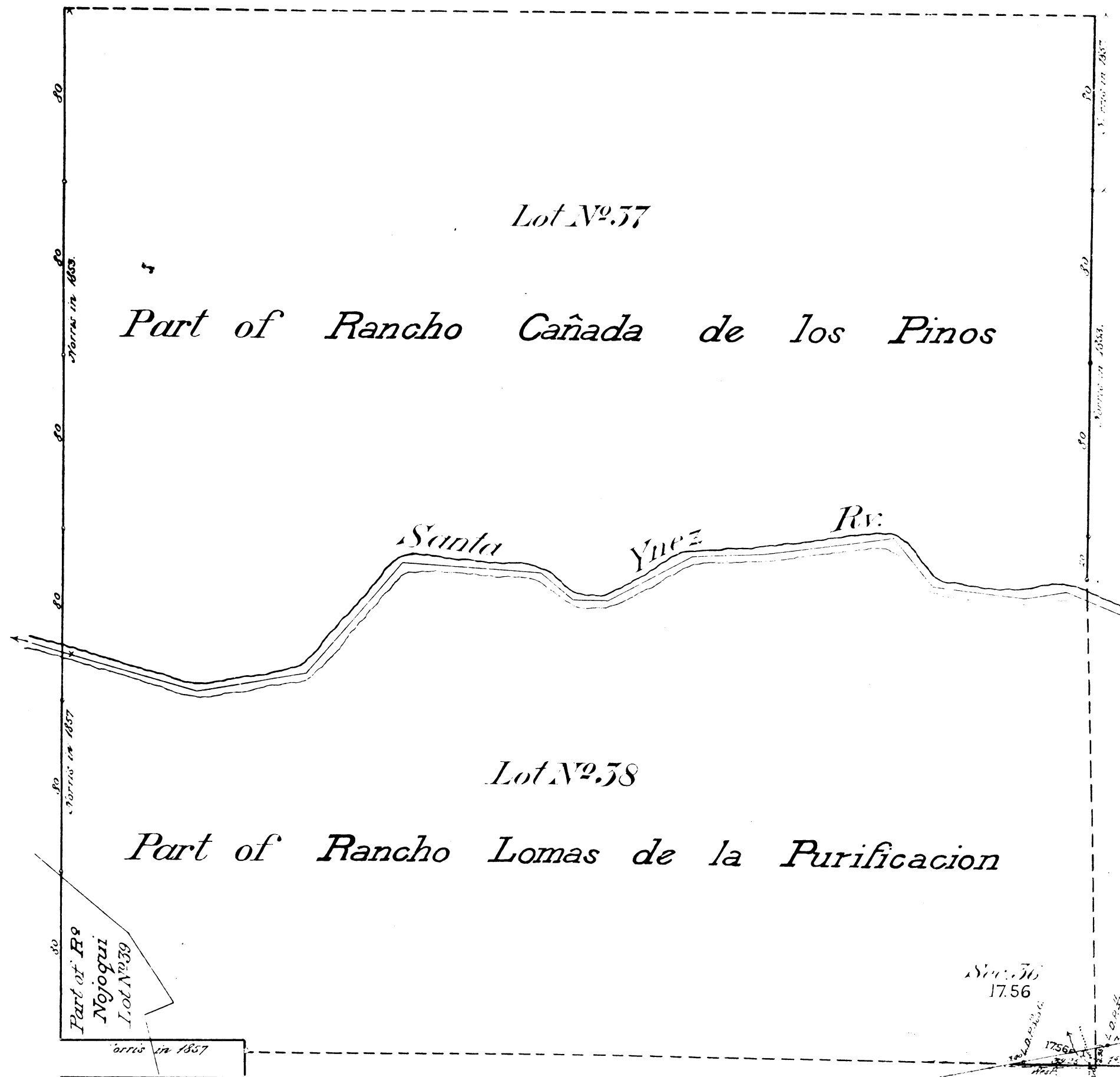
This plat is strictly conformable to the approved field notes, and the survey, having been correctly executed in accordance with the requirements of law and the regulations of this Bureau, is hereby accepted.

For the Director

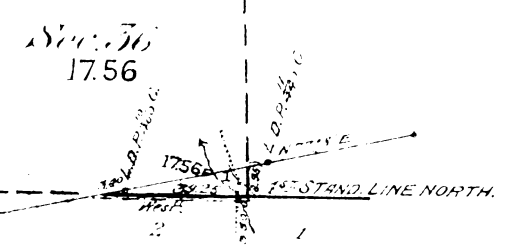
*Bernard W. Halper*  
Chief, Division of Cadastral Survey



Township N<sup>o</sup> 6 North, Range N<sup>o</sup> 30 West, San Bernardino Meridian, California.



Area of Public Lands surveyed by Sickler 17.56 Acres  
 Estimated Area of Private Grants 23,553.00  
Aggregate 23,570.56



Surveys Designated	By whom Surveyed	Cont'd. Date	Amount Surveyed	When Surveyed
Partial East and West B'ds of Township	W. D. Veris	Oct. 13, 1853		1854
South Boundary of Township		Dec. 3, 1857		1858
Boundaries of Lot N <sup>o</sup> 37		last April 17, 1858		
38		Jan. 23, 1858		
39		Oct. 23, 1858		
Part of South Boundary of Lot N <sup>o</sup> 58, Not surveyed	Geo. H. Veris	128 April 17, 1858		1858
East Township	Jas. R. Glover	303 Feb. 18, 1858		
First Standard Line North, & Meridian	William C. Sickler	570 March 27, 1860	0 39 35	1861

The above Map of Township N<sup>o</sup> 6 North Range N<sup>o</sup> 30 West San Bernardino Meridian California is a true and correct copy of the original map filed in the office of the U.S. Surveyor General at San Francisco, California, June 12, 1902.

W. L. Graham  
 Surveyor General

Dr. J. H. ...  
 Cor. 1742.1