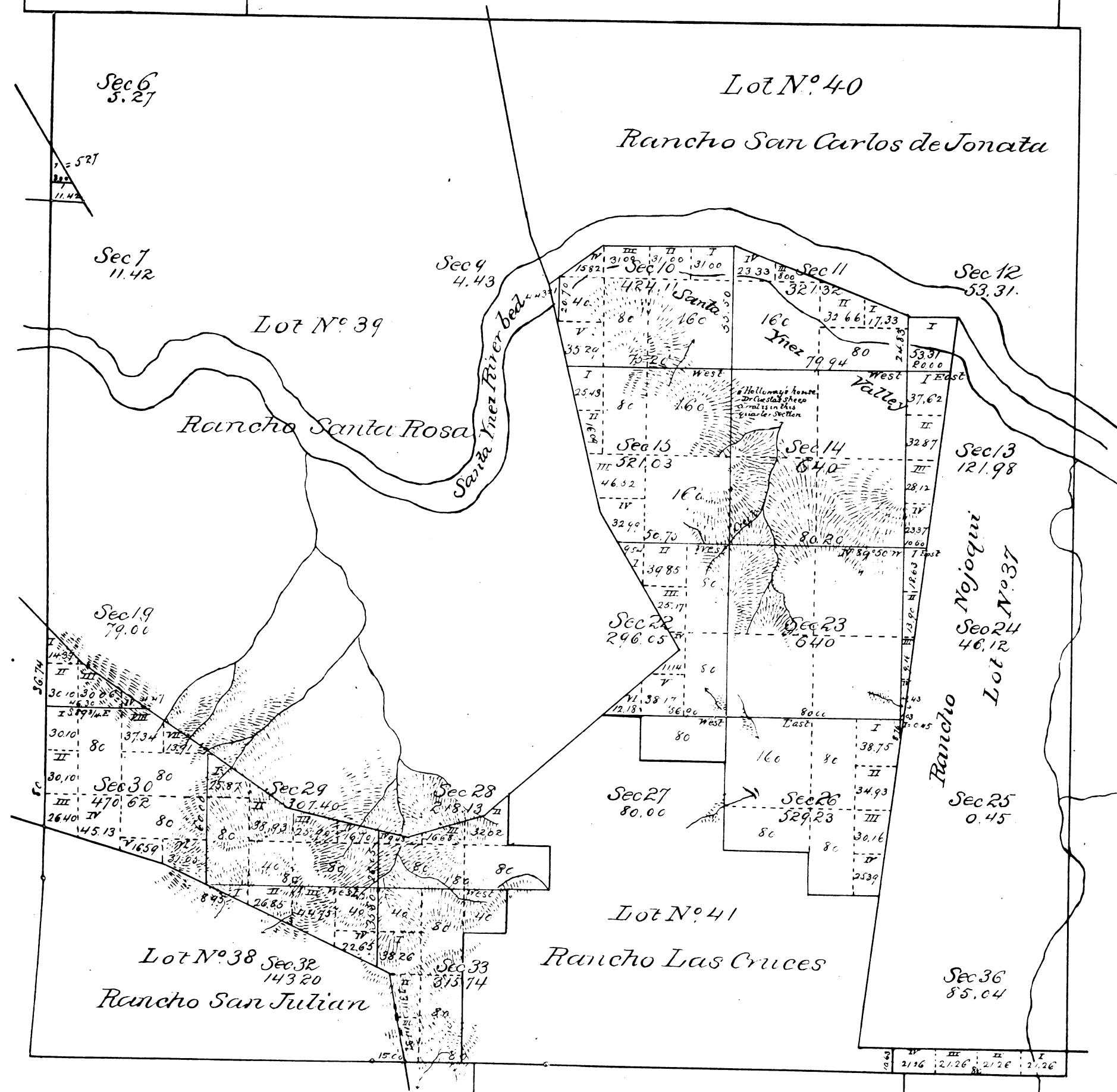


Township N° 6 North Range N° 32 West San Bernardino Meridian



Aggregate Area of Public Land 5313.85 acres
 Estimated Private Grants 17253.35 "
 Aggregate 22667.20 "

Posted in Tract Book, Aug. 13, 1887
 A. J. K. on Vol. 49

Surveys Designated	By Whom Surveyed	Date of Contract	Amount of Surveys	When Surveyed	Main Declination
Lot N° 41 (Private Grant) amended to conform to location of Rancho Las Cruces, see instructions of General Land Office March 23d 1883					

The above map of Township N° 6 North, Range N° 32 West, San Bernardino Meridian, is correctly compiled from examined and approved field notes on file in this office
 Surveyor General's Office
 San Francisco, California
 November 17 1885

W. A. Brown
 Sur. Gen. Cal.