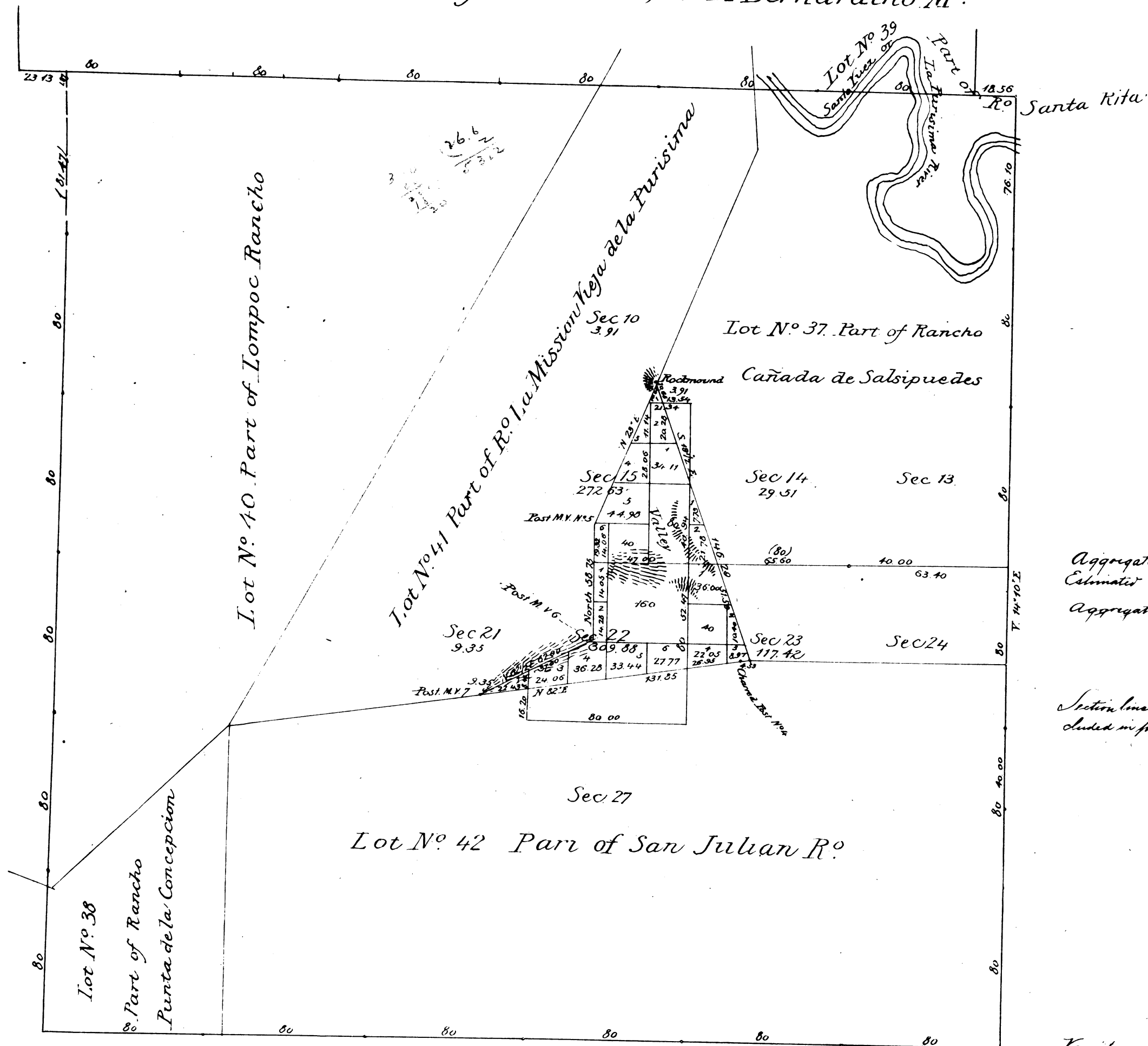


Township N<sup>o</sup> 6 North, Range N<sup>o</sup> 34 West, San Bernardino M<sup>tn</sup>



Filed with Register Jan. 2nd. 1875

Aggregate Area of Public Land	742.70 Acs.
Estimated " Private Grants	22133.69 "
Aggregate	<u>22876.39</u> "

Section lines colored both red and blue or surveyed by Norway and included in present account,

Variation on Section lines 14° 30' E

Surveys Designated	By Whom Surveyed	Date of Contract	Amount of Surveys	When Surveyed
North boundary of Township	H. W. Norris	October 12 <sup>th</sup> 1853		1855
Rest of Township lines	"	December 8 <sup>th</sup> 1857		1858
Boundaries of Lot N <sup>o</sup> 42	"	(Inv) Oct 7 <sup>th</sup> 1859		1859
" " " " 38	J. E. Terrell	Aug 15 <sup>th</sup> 1860		1860
" " " " 39	G. H. Thompson	Sept 3 <sup>rd</sup> 1868		1869
" " " " 37	W. H. Norway	Aug 15 <sup>th</sup> 1873		1873
" " " " 40	"	"		1873
" " " " 41	"	"		1873
Township lines colored red (resurvey)	"	January 6 <sup>th</sup> 1873		1873
Ranch " " blue	"	October 5 <sup>th</sup> 1874	1 ml 57 chs 85 lks	1874
Section " " red	"	January 6 <sup>th</sup> 1873		1873
Rest of Section lines	"	October 5 <sup>th</sup> 1874	5 mls 52 chs 96 lks	November 12 <sup>th</sup> 1874

Filed Jan 12. 1875  
Ninth

The above map of Township N<sup>o</sup> 6 North Range N<sup>o</sup> 34 West San Bernardino Meridian, is strictly conformable to the field notes of the surveys thereof on file in this office, which have been examined and approved  
Surveyor General's Office  
San Francisco, California  
November 17<sup>th</sup> 1874

Jas. T. Stratton  
Surv. Genl. Cal

A full, true and correct Copy of the Original Map on file in this Office  
Surveyor General's Office  
San Francisco, California  
December 14<sup>th</sup> 1877

J. W. Thomas  
Surv. Genl. Cal