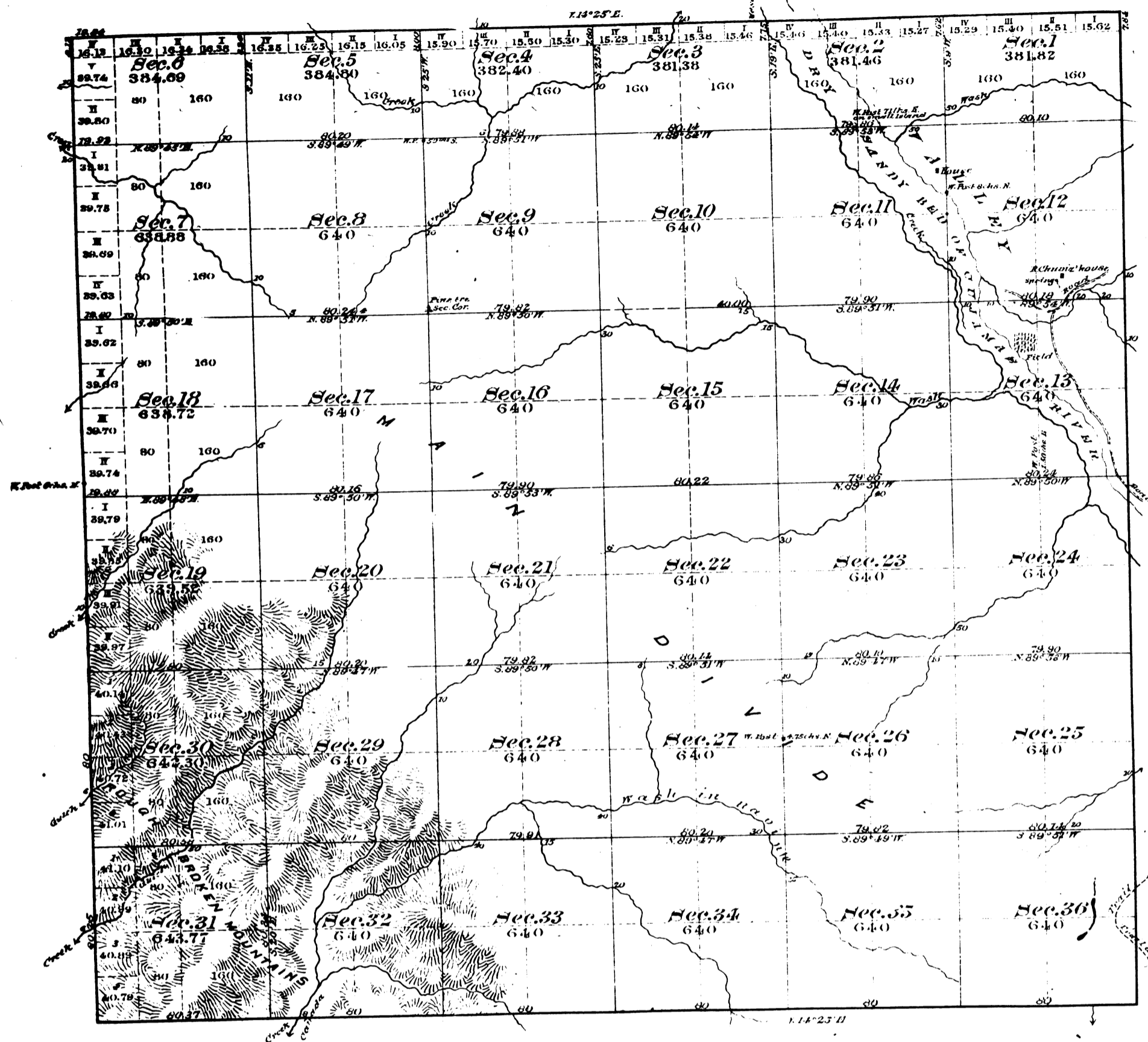


Township No 7 North, Range No 24 West, San Bernardino Meridian.



Aggregate Area of Public Land 21489.74 Acres

Surveys Designated	By whom surveyed	Date of Contract	Amount of Surveys	When surveyed	Neq. Declin.
Lines	W. B. Norway	October 10 <sup>th</sup> 1879		1880	
South Bounds of Tp.	Geo. S. Collins	October 21 <sup>st</sup> 1879		1880	
East	"	"	57 1/2	1880	14 25 East
Section lines	"	"	48 39 00	1880	11 25 "
Township lines	"	May 25 <sup>th</sup> 1880	4 0 02	1881	14 25 East
Section lines	"	June 24 <sup>th</sup> 1880	2 0 02	1881	14 25 East

The above map of Township No 7 North, Range No 24 West, San Bernardino Meridian, is strictly conformable to the field notes of the surveys, thereof on file in this office, which have been examined and approved. Surveyor General's Office, San Francisco, California, June 16<sup>th</sup> 1885.

W. H. Brown  
U.S. Sur. Gen. Cal.