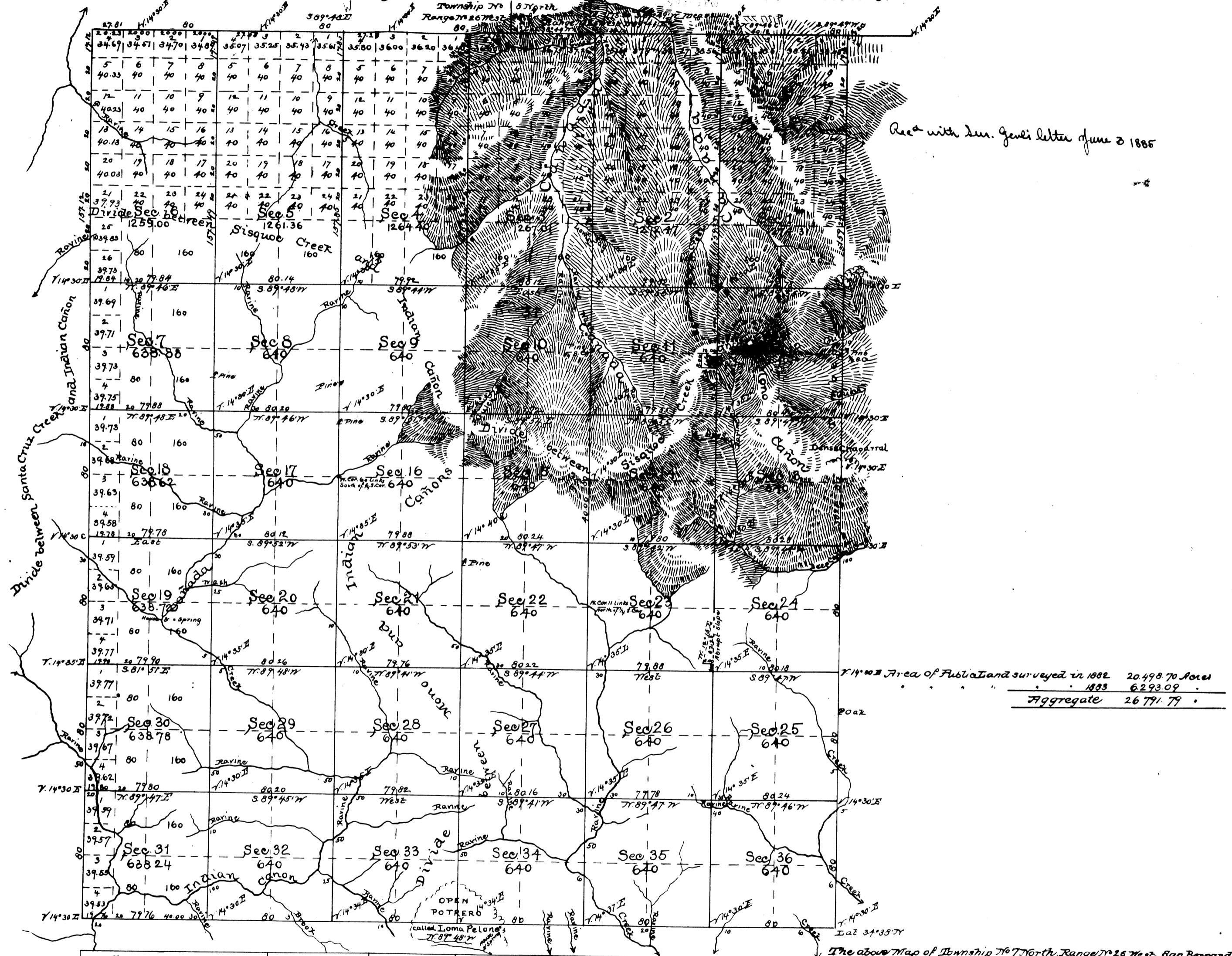


Township No 7 North, Range No 26 West, San Bernardino Meridian.



Surveys Designated	By whom surveyed	Date of Contract	Amount of Surveys	When surveyed	Mean Decl ⁿ
Lines previously surveyed,	exhibited on Map approved	November 2 nd 1852			
Part of East Bay of Township North, Ip. resurveyed	Geo S. Collins	April 1 st 1852	3711 ² 28 Chs 92 Lks	1855	
Section Lines			2 . 13 . 26		
Connecting Lines			15 . 10 . 04	14° 30' East	
			0 . 54 . 40	May 21 st 1853	

The above Map of Township No 7 North, Range No 26 West, San Bernardino Meridian is strictly conformable to the field notes of the surveys thereof on file in this Office, which have been examined and approved
 U.S. Surveyor General's Office
 San Francisco, California
 June 3rd 1885

W. V. Brown
 U.S. Sur. Gen'l. Cal.

Rec^d with Genl. letter of June 3 1885