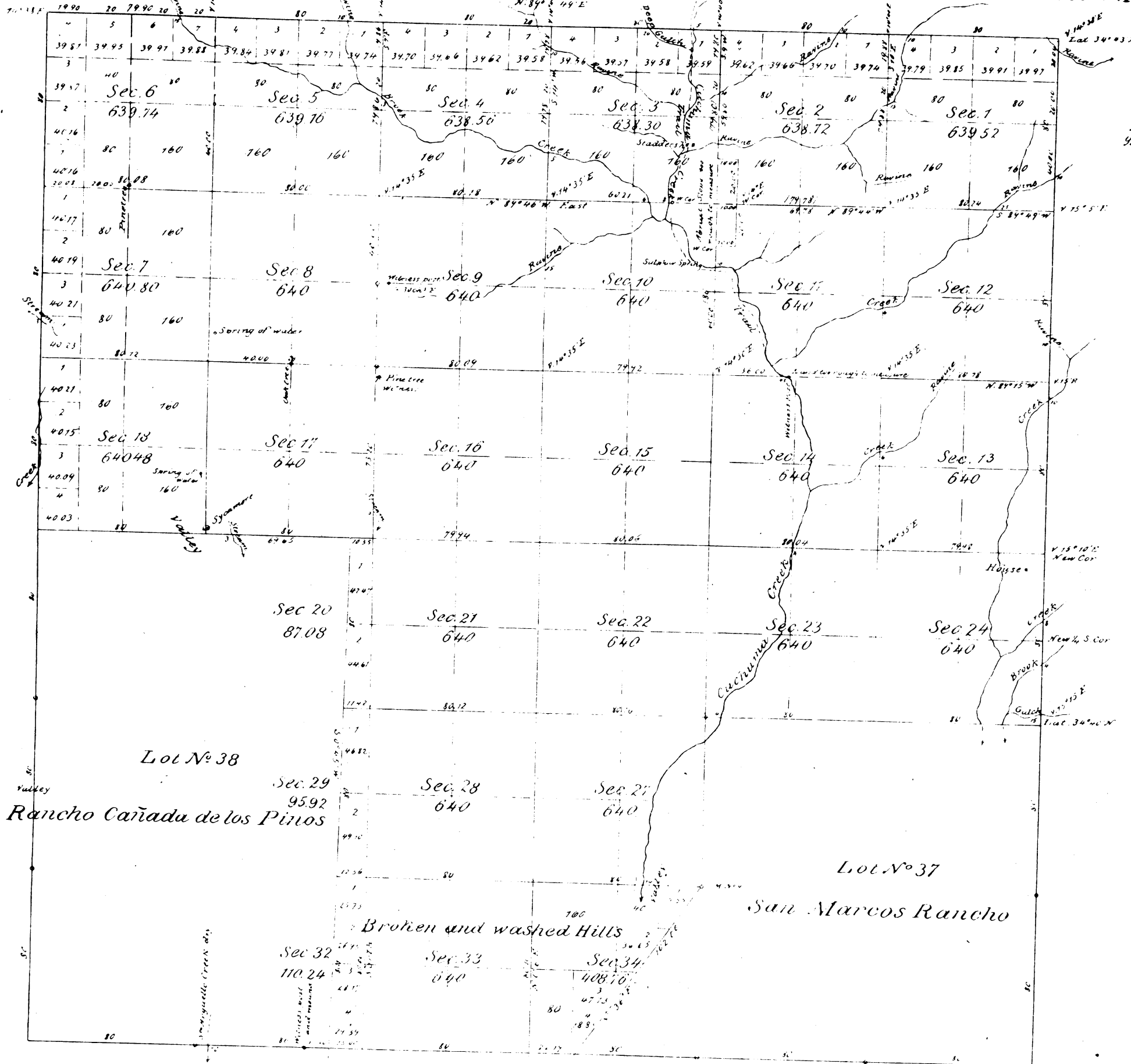


Township No 7 North, Range No 29 West, San Bernardino Meridian.



Received with  
the Beale letter  
May 27, 1856

Area of Public Land surveyed in 1858	8824 60 Acres
" " " " " " " " " " " "	1852 671 03
" " " " " " " " " " " "	1855 1154 00
Lots 37 and 38, Private Grants	6338 60
Aggregate	13055 23

Surveys designated	By whom surveyed	Date of survey	Amount surveyed	When surveyed	Main Declaration
Township lines	J. H. Glover	July 20 <sup>th</sup> 1850	3600	1851	
Section "	G. S. Collins	April 1 <sup>st</sup> 1852	2560	29 <sup>th</sup> May 1852	14 <sup>th</sup> 02 E
E and W boundaries of Sec 33	A. S. Cooper	" 30 <sup>th</sup> 1851	2	" "	1855
N & S boundary of Sec 34 re surveyed	"	" "	1	March 30 <sup>th</sup> 1855	14 <sup>th</sup> 30 E

The above Map of Township No 7 North, Range No 29 West, San Bernardino Meridian, is strictly conformable to the field notes of the survey, deposited on file in this Office which have been examined and approved.

U. S. Surveyor General's Office  
San Francisco, California,  
May 27<sup>th</sup> 1856

*R. D. Whitt*  
U. S. Survey Genl. Off.