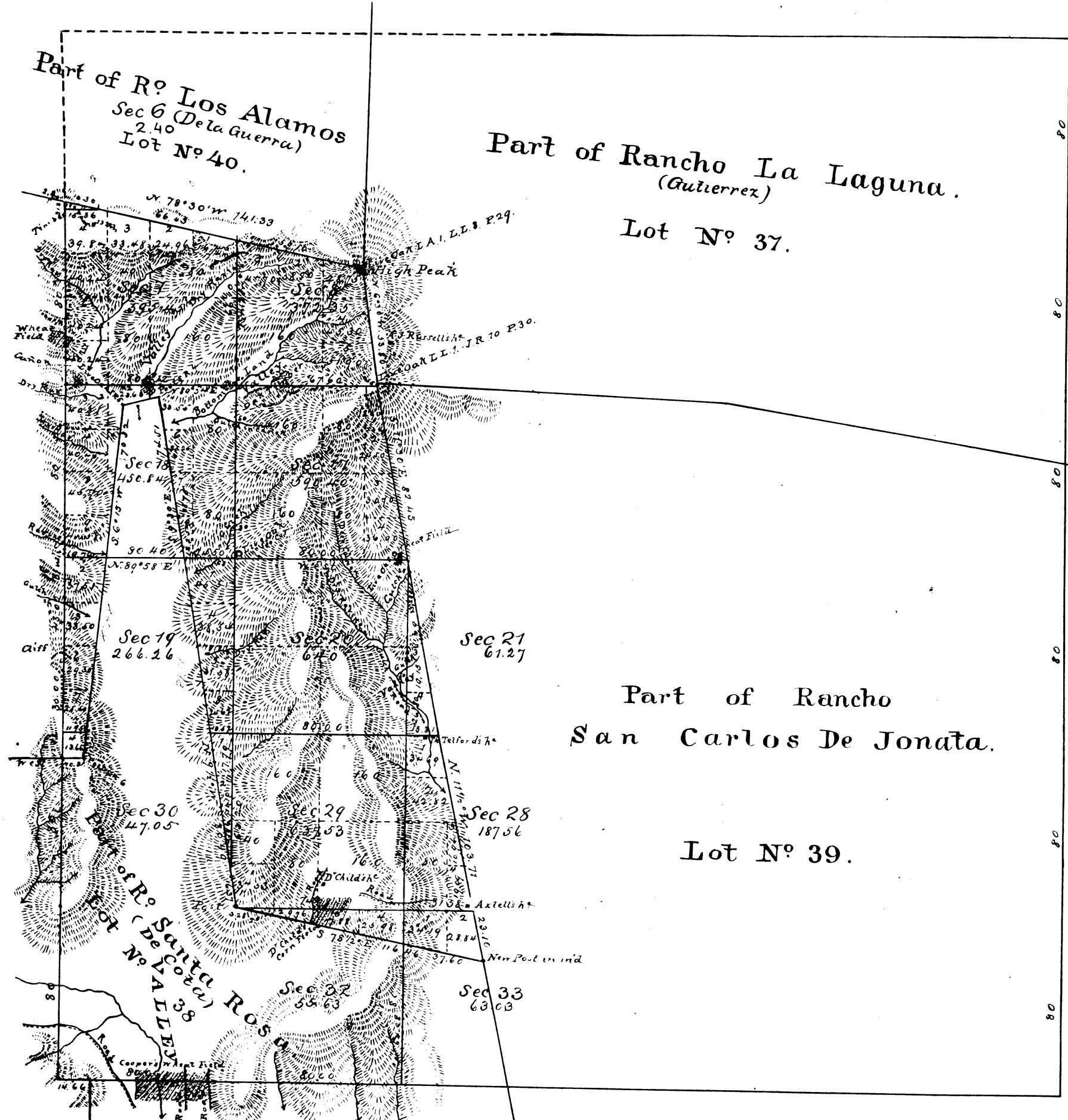


Township N° 7 North, Range N° 32 West, San Bernardino Meridian.



Revised with  
Gen'l's letter  
of Sep 20 1883

Printed for Report  
No. 40045  
San M. S. Co.

Area of Public Land surveyed by von Schmidt	977.14 Acres
" " " " " Cervantes	2992.68
Estimated Area of Private Grants	18282.00
<b>Aggregate</b>	<b>22251.77</b>

Posted in Trust Book 49, Aug. 19, 1884 Ray

Survey Designated	By whom surveyed	Date of Contract	Amt of Survey	When surveyed	Magn. Declin.
Township lines except Part colored blue	R. W. Norris	June 3 <sup>rd</sup> 1864		1864	14° 30' East
Boundaries of Lot N° 39	"	"		1868	
" " " " " 40	J. E. Terrell	1st of Nov. 15 <sup>th</sup> 1860		1860	
" " " " " 38	G. H. Thompson	Sept 3 <sup>rd</sup> 1868		1868	
" " " " " 37	Located by the U.S. Surveyor General	"		"	
Township lines colored brown resurveyed	A. W. von Schmidt	August 7 <sup>th</sup> 1880		1880	14° 30' East
Ranch	"	"		"	
Section lines colored brown	"	"		"	
Part of meadow off (public domain)	A. L. Cervantes	January 20 <sup>th</sup> 1880	2 nls 48 ch 13 lns	1883	
Ranch line colored blue resurveyed	"	"	53 - 80 "	"	
Section lines colored blue (augur)	"	"	3 - 75 - 36 "	"	
Section lines colored blue (augur) not colored (low)	"	"	4 - 29 - 83 "	"	
Line colored green	"	"	not colored in amount	"	
Connecting lines colored red	"	"	4 - 41 - 1 "	April 7 <sup>th</sup> 1880	

The above Map of Township N° 7 North, Range N° 32 West, San Bernardino Meridian is strictly conformable to the field notes of the surveys thereof on file in this Office, which have been examined and approved.

Surveyor General's Office  
San Francisco, California  
September 19<sup>th</sup> 1883.

W. H. Brown  
U. S. Surv. Gen'l Cal.