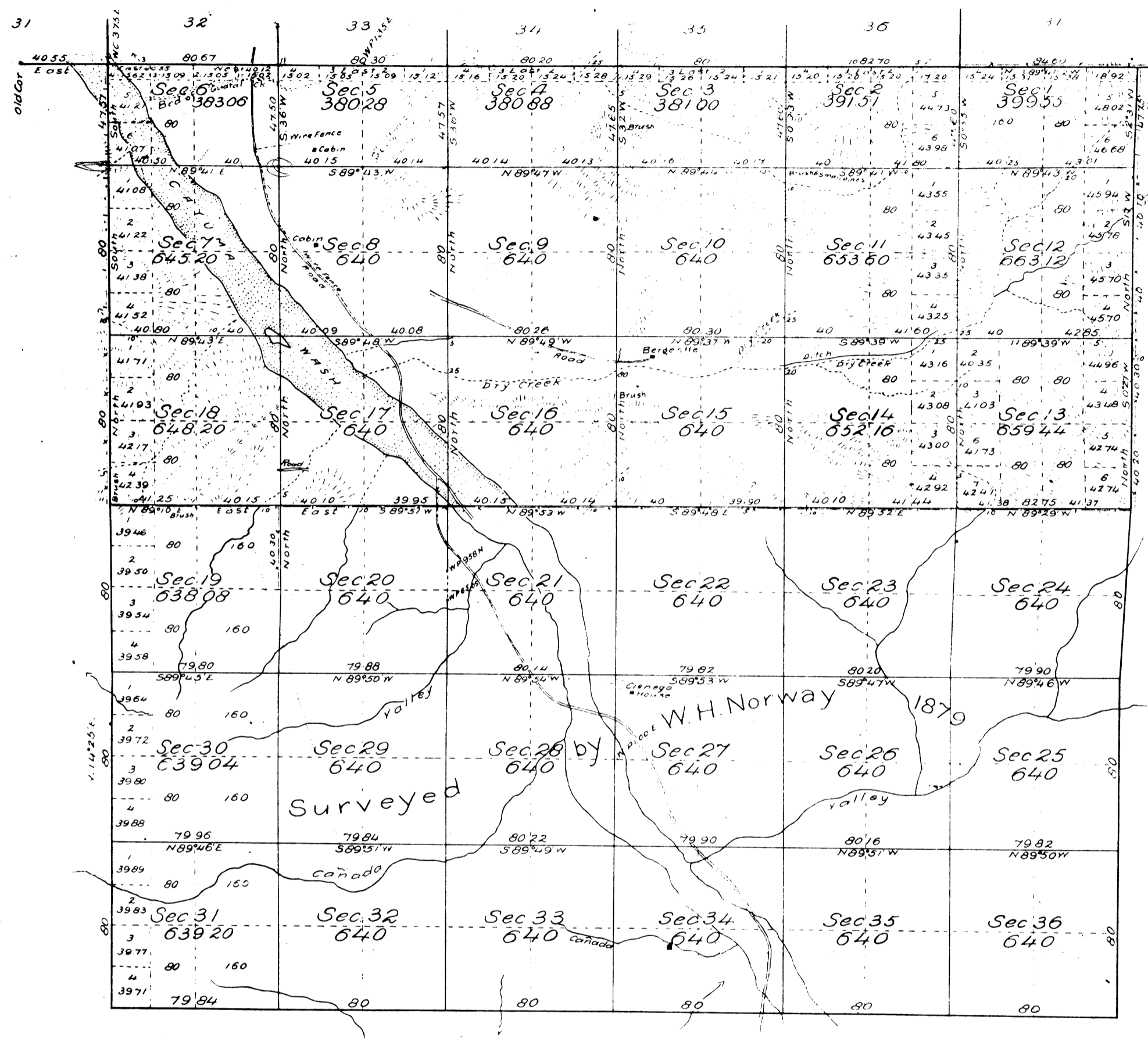


Township N^o 8 North, Range N^o 24 West, San Bernardino Meridian, California.

Map of 1893



Area of Public Land previously surveyed	11 027.68 Acres
" " " " surveyed by Deputy Rice	9 918.00 "
Aggregate	<u>20 945.68 "</u>

Surveys Designated	By whom surveyed	Date of Contract	Amount of Surveys	When Surveyed	Mean Declination
For details of previous surveys in this Township See Map approved May 20th 1891					
E & W Boundary re-surveyed	Charged	John C. Rice	Contract N ^o 2 Mls 15 Chs 32 lks	1893	
E & W	not charged	" " "	95	4	5
Section Lines	Charged	" " "	Dated	3	45
"	not charged	" " "	September	3	0
"	Surveyed	" " "	21 st 1892	25	10
		" " "		12	November 25 1893

The above Map of Township N^o 8 North Range N^o 24 West San Bernardino Meridian California, is strictly conformable to the field notes of the surveys thereof on file in this office, which have been examined and approved Surveyor General's Office San Francisco California February 12th 1896.

W.S. Green
Surr Genl Cal

Sec. 4