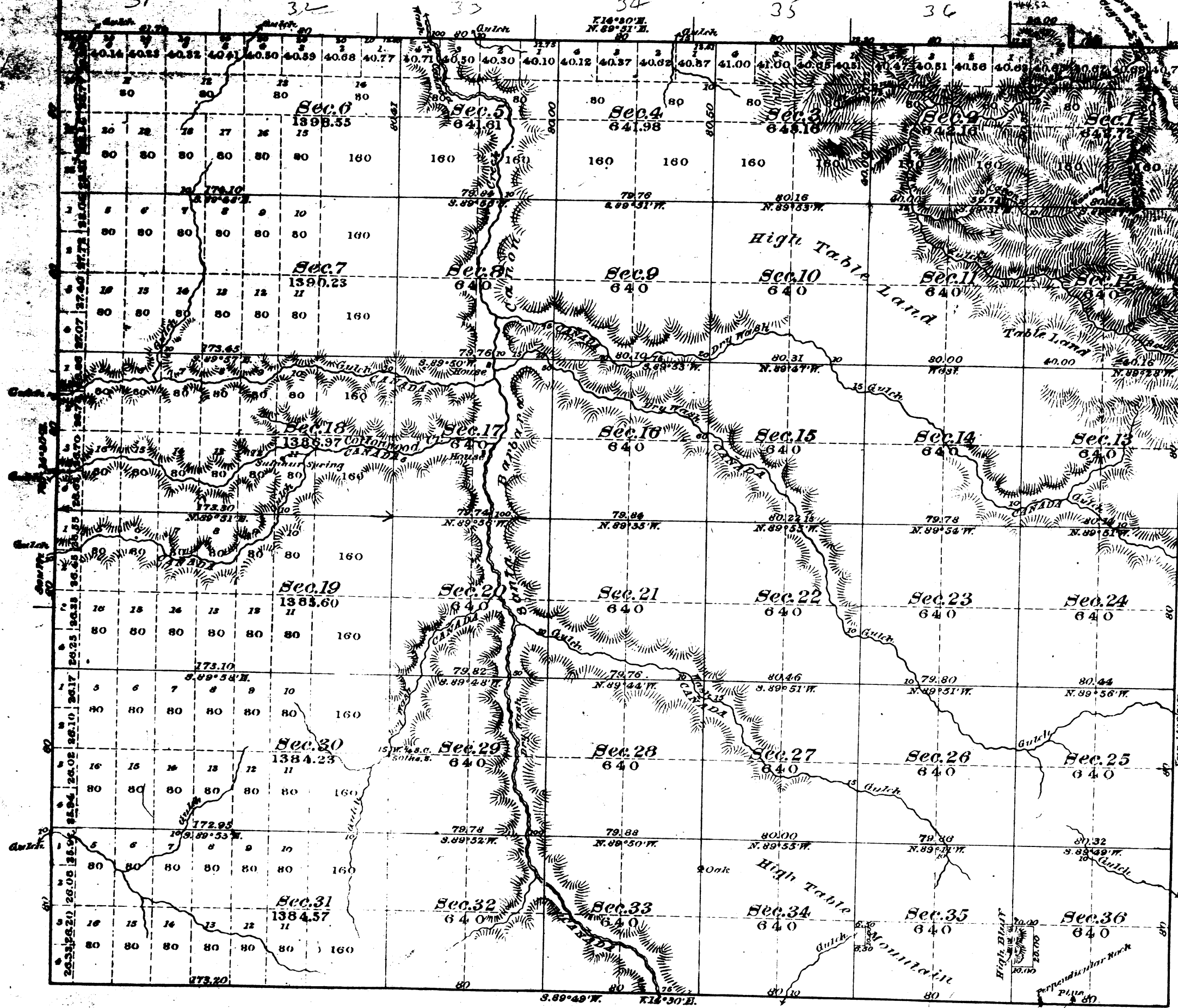


Township N. 8 North, Range N. 25 West, San Bernardino Meridian.



Public Land surveyed in 1881	26,295.74 Acres
..... 1883	2,266.05
Aggregate	27,561.79

Survey Designated	By whom surveyed	Date of Confirmation	Amount of surveys then surveyed	Mean Declivity
Lines previously surveyed, exhibited on Map approved September 25 th 1882				
Part of East Side of Tp.	J. R. Gunn	January 20 th 1880	3 mls. 0.75. 30 lvs.	1883
Section Lines	"	"	" 0 " 49 "	1883
Connecting Lines	"	"	" 0 " 54 " 00 "	May 2 nd 1883

The above map of Township N. 8 North, Range N. 25 West, San Bernardino Meridian is strictly conformable to the field notes of the surveys there of on file in this office, which have been examined and approved.
 Surveyor General's Office,
 San Francisco California.
 May 8th 1885.

W. H. Brown
 U.S. Sur. Gen. Col.