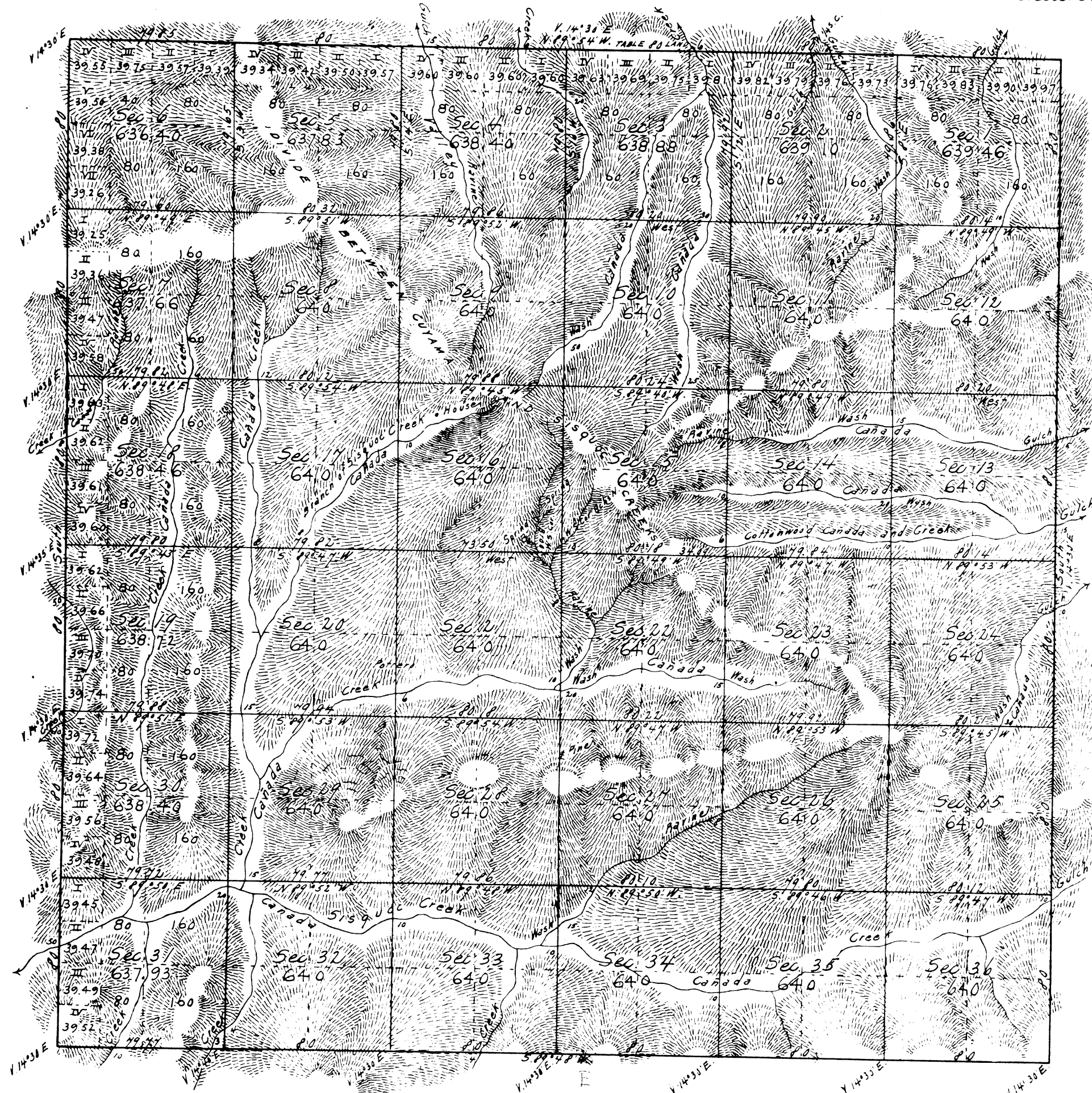


Township N^o 8 North, Range N^o 26 West, San Bernardino Meridian.



RECEIVED WITH
SUR-GEN'L'S LETTER
OF SEP. 27. 1882.

Aggregate Area of Public Land 23,021.24 Acres

Surveys Designated	By whom Surveyed	Date of Contract	Amount of Surveys	When Surveyed	Mean Declination
North boundary of Township	J. A. Glover	January 26 th 1880	changed in prev. acct.	1881	
Rest of Township lines (high rate)	"	"	17m's 79chs 771ks	1881	4° 35' East
Section lines not col'd	"	"	34. 79. 44.	1881	
" col'd black (low rate)	"	"	24. 72. 67.	December 13 th 1881	4° 35' East

The above Map of Township N^o 8 North, Range N^o 26 West San Bernardino Meridian is strictly conformable to the field notes of the surveys thereon file in this Office, which have been examined and approved. Surveyor General's Office, San Francisco, California, September 25th 1882.

W. H. Brown

U. S. Surv. Gen. Co.