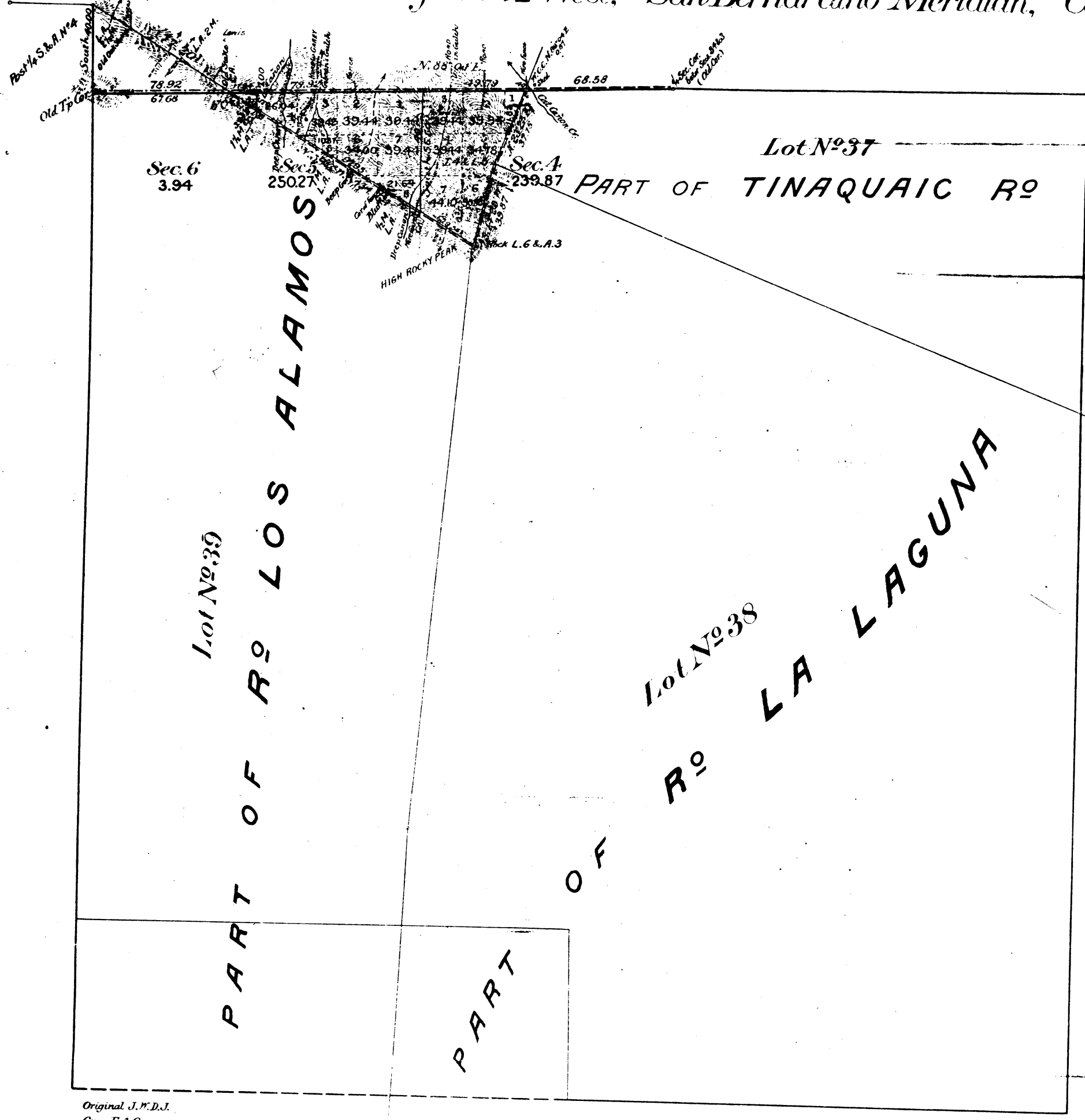


Township N^o 8 North, Range N^o 32 West, San Bernardino Meridian, Cal'a



Aggregate Area of Public Land Surveyed	494.08 Acres
Estimated Area of Private Grants	22,267.92 "
Aggregate	22,760.00 "

Original J.W.D.J.
Copy F.A.C.

Surveys Designated	By whom Surveyed	Contract No.	Amount of Surveys			When Surveyed
			Acres	Sq. Rds.	Perches	
Part of North Boundary of Section 6	G. W. Lewis	Inst. Jan'y 31 1874				1874
Rest of Township lines	R. H. Norris	Inst. June 3 ^d 1854				1854
Boundaries of Lot N ^o 37		Inst. April 23 1855				1855
38	Leahed & Burr Legend					
39	J. F. Terrell	Inst. Aug 1 1860				1860
Part of North By of Tp Re-Surveyed	John H. Garber	162 July 26 1900	2	18	53	1901
New			0	67	68	1901
Ranch Boundaries Re-Surveyed			2	51	69	1900
Section lines			0	63	50	July 5, 1901
Connecting lines			0	11	95	

The above Map of Township N^o 8 North, Range N^o 32 West, San Bernardino Meridian, California, is strictly conformable to the field notes of the Surveys thereof, on file in this Office, which have been examined and approved.
U.S. Surveyor General's Office,
San Francisco, California,
August 5th 1901.

J. M. Heaves