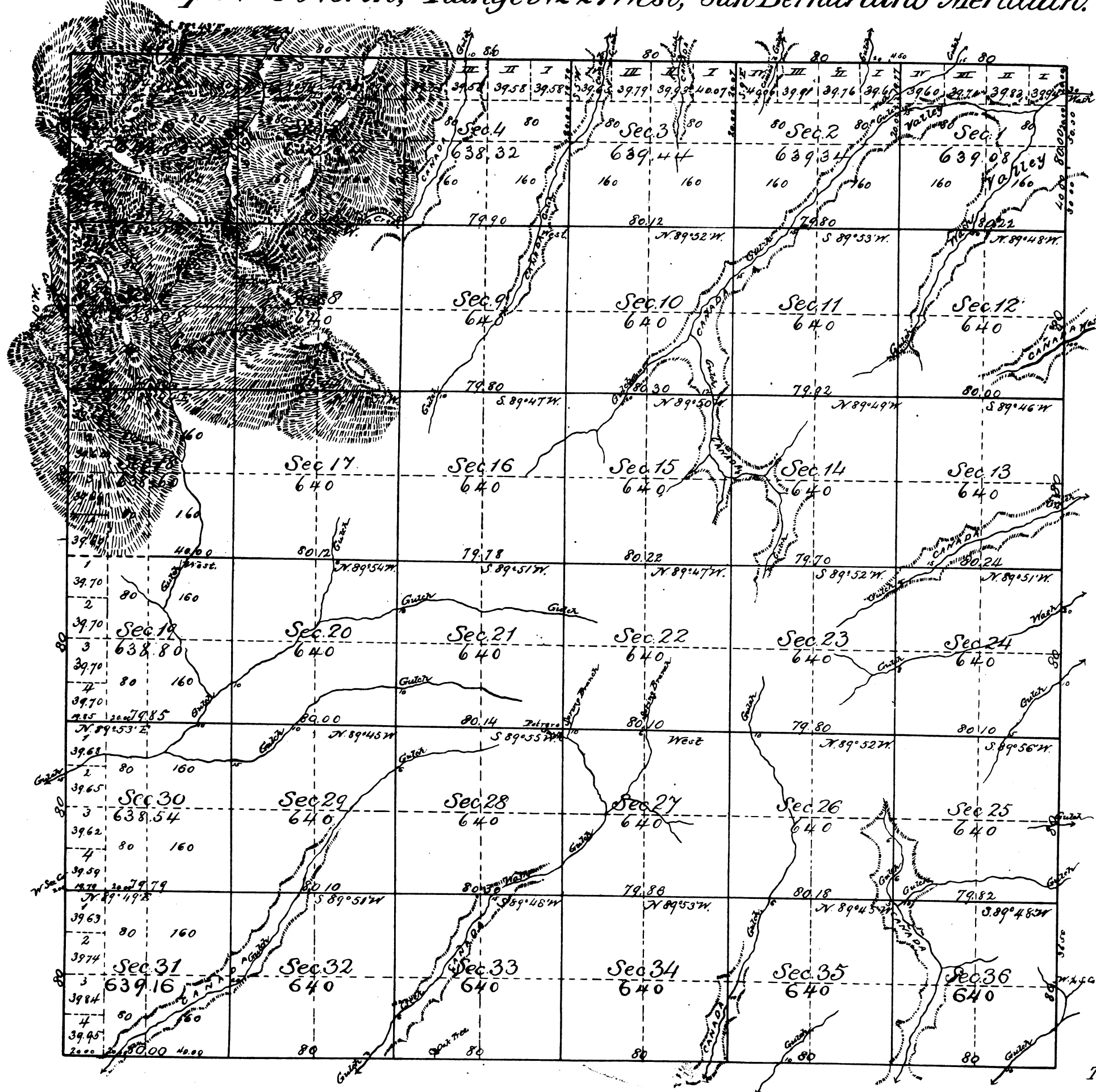


Township No 9 North, Range No 27 West, San Bernardino Meridian.



Revised with  
New Plans letter  
May 8 1885

44435

Public Land surveyed in 1881, 20,152.68 Acres.  
 " " " " 1883, 2,882.52 "  
 Aggregate, 23,035.20 "

Posted  
Sept. 8, 1885  
Vol. 47, P. 61.  
No. a.s.

Surveys Designated	By Whom Surveyed	Date of Contract	Amount of Surveys	When Surveyed	Mean Decl'n
Lines previously surveyed exhibited on Map approved February 17th 1882					
Part of N. Bay of Tp.	J. R. Glover.	January 26th 1880.	1 M. 79 Ch. & 56 Lks.	1883.	} 41° 30' East.
" " " "	"	"	3 " 00 " 96.	1883.	
" " Section Lines.	"	"	5 " 00 " 50.	May 19th, 1883.	

The above Map of Township No 9 North, Range No 27 West, San Bernardino Meridian, is strictly conformable to the field notes of the surveys thereof on file in this Office, which have been examined and approved.

Surveyor General's Office  
San Francisco, California.  
May 8<sup>th</sup> 1885.

*W. H. Brown*  
U.S. Surv. Gen'l. Cal.