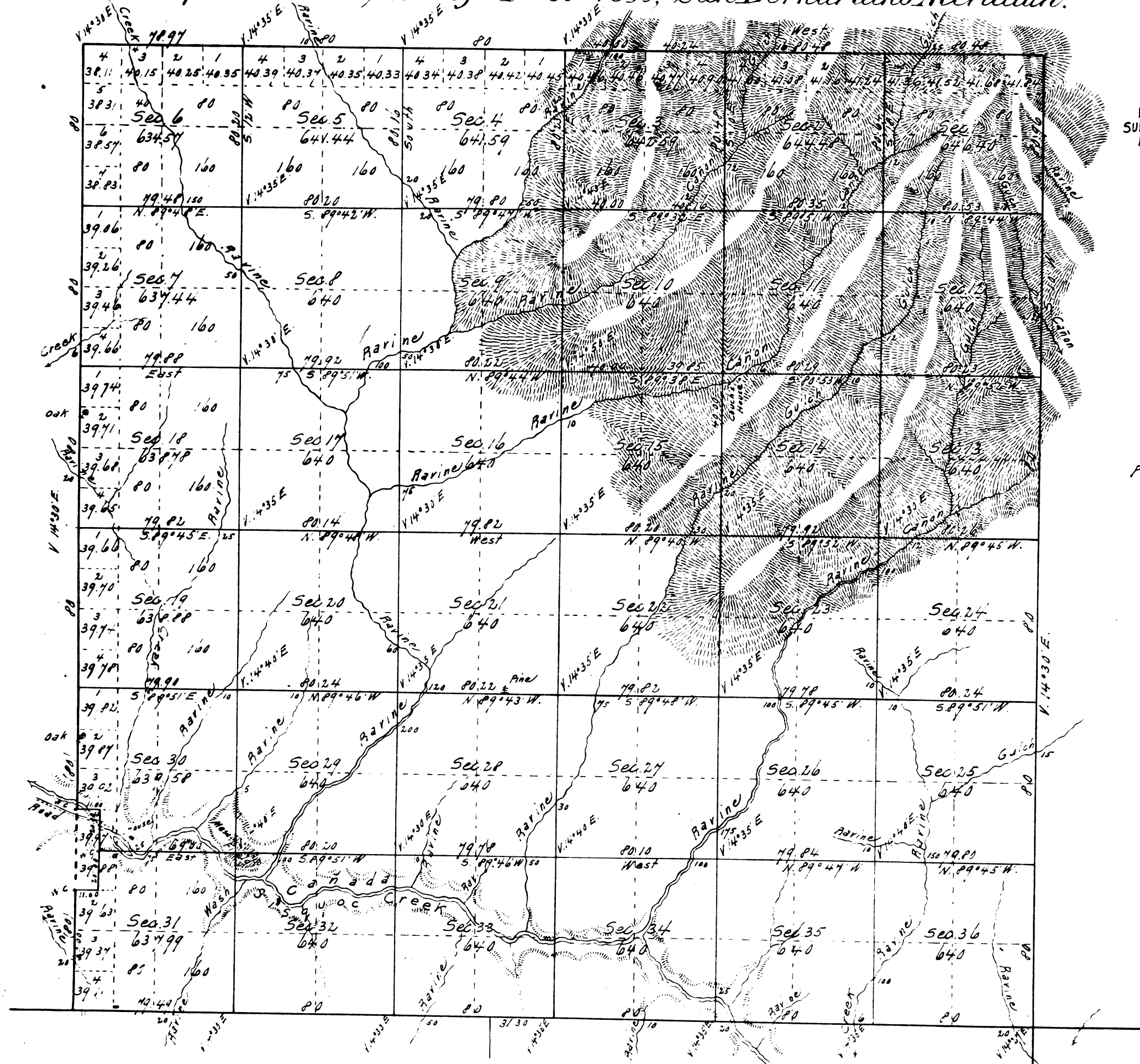


Township N^o 9 North, Range N^o 28 West, San Bernardino Meridian.



RECEIVED WITH
SUR. GEN'L'S LETTER
MAY 8 1875

| | |
|---------------------------------------|--------------------|
| Public Land surveyed in 1861 and 1862 | 18,231.19 Acres |
| " " " " 1863 | 4,012.55 " |
| <u>Aggregate</u> | <u>22,243.74 "</u> |

| Surreys Designated | By whom Surveyed | Date of Certificate | Amt of Surreys | When Surreys Made | Mean Sec. " |
|--|------------------|--|---|---------------------------|--|
| Lines previously surveyed - exhibited on | Map surveyed | September 25 th 1862 | | | |
| Part of North Bound of T ^o | J. R. Glaser | Jan ^y 26 th 1866 | 2 m ² 41 ⁰⁰ 20 ¹⁰⁰ | 1863 | 14 ⁰⁰ 30 ⁰⁰ East |
| East | " | " | 3 0 90 | 1863 | |
| Section lines | " | " | 11 42 49 | May 22 nd 1863 | |

The above Map of Township N^o 9 North, Range N^o 28 West, San Bernardino Meridian, is strictly conformable to the field notes of the surveys thereof on file in this Office, which have been examined and approved.

U. S. Surveyor General's Office,
San Francisco, California
May, 8th 1875.

W. H. Brown
U. S. Surveyor General