

TOWNSHIP 9 NORTH, RANGE 30 WEST, OF THE SAN BERNARDINO MERIDIAN, CALIFORNIA.

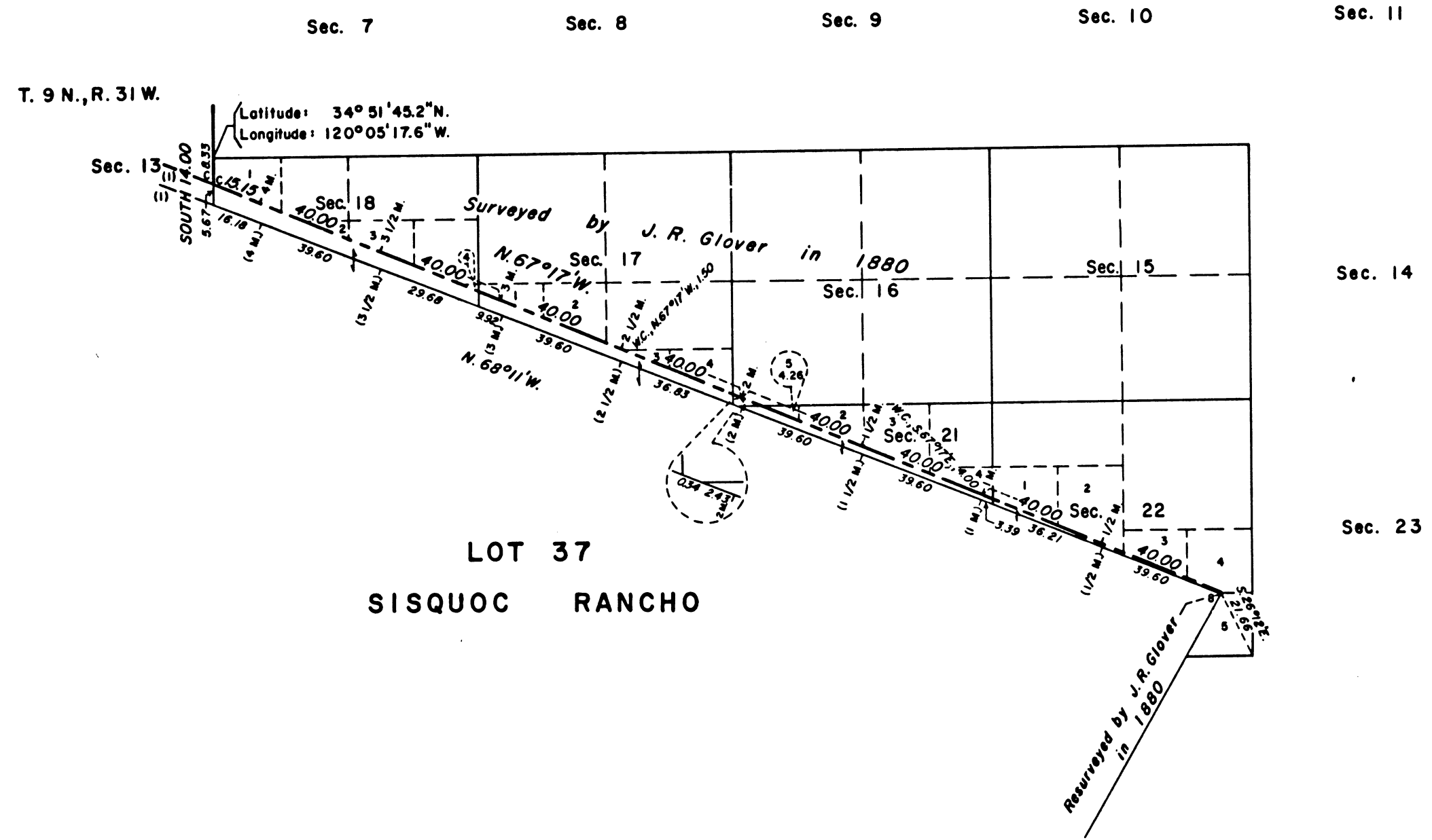
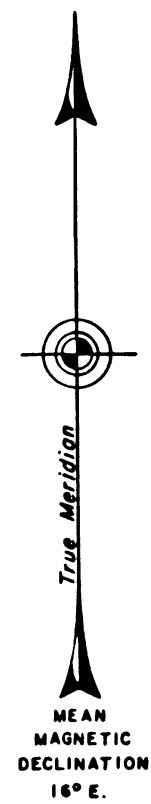
DEPENDENT RESURVEY OF RANCHO BOUNDARY

A history of surveys is contained in the field notes.

This plat represents the dependent resurvey of the north boundary of the Sisquoc Rancho, designed to restore the corners in their true original locations according to the best available evidence, T. 9 N., R. 30 W., of the San Bernardino Meridian, California.

Except as indicated hereon, the lottings and areas are as shown on the plat approved May 8, 1885.

Surveys executed by Jack W. Rabedew, Supervisory Cadastral Surveyor, beginning June 17, 1980, and completed October 15, 1982, pursuant to Special Instructions dated May 28, 1980, for Group No. 770, and Special Instructions dated February 27, 1981, and Supplemental Special Instructions No. 1, dated August 6, 1982, for Group No. 779, California.



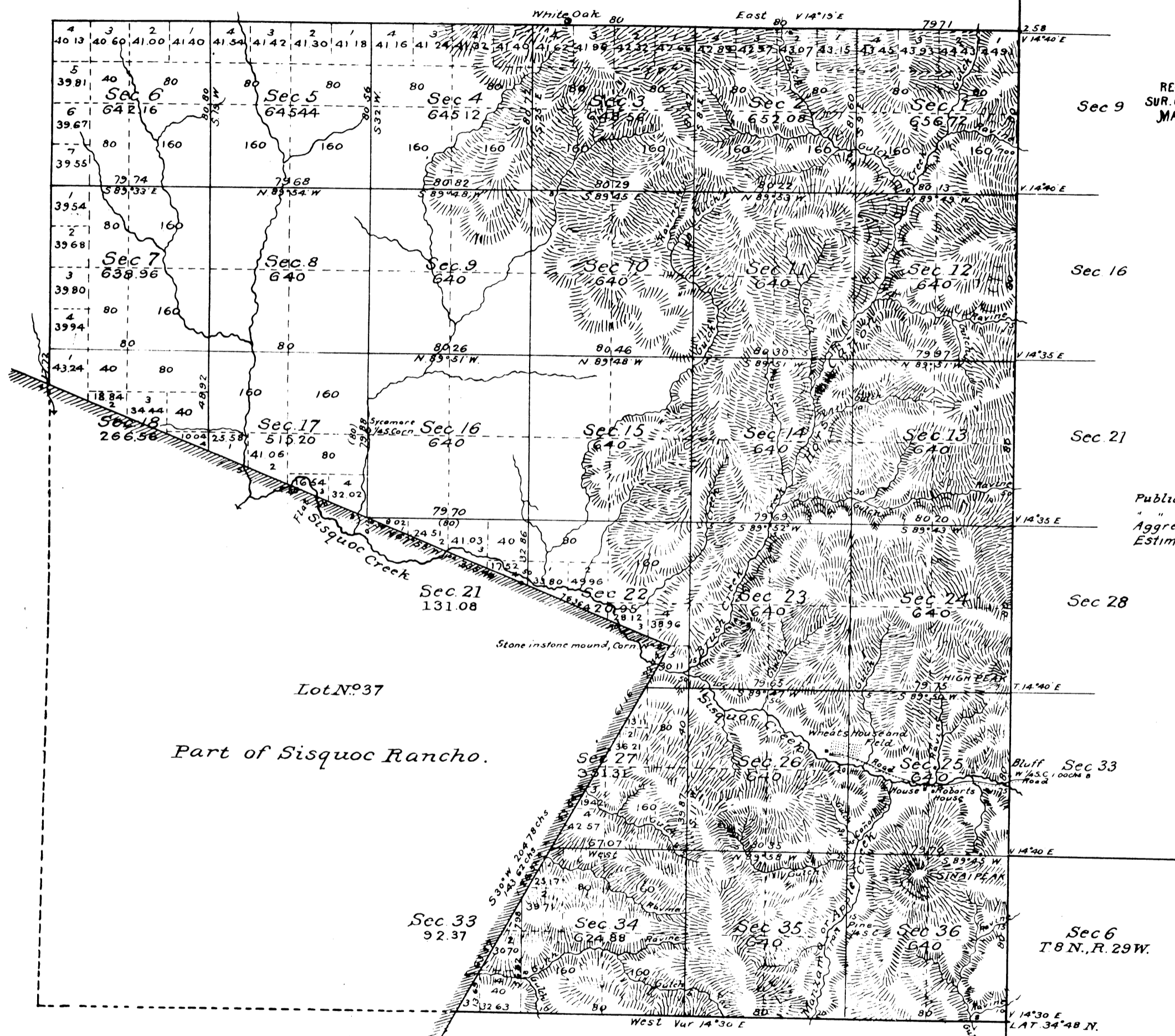
UNITED STATES DEPARTMENT OF THE INTERIOR
BUREAU OF LAND MANAGEMENT
Sacramento, California October 7, 1983

This plat is strictly conformable to the approved field notes, and the survey, having been correctly executed in accordance with the requirements of law and the regulations of this Bureau, is hereby accepted.

For the Director

Clifford A. Robinson
Chief Cadastral Surveyor

Township N^o 9 North, Range N^o 30 West, San Bernardino Meridian



Sec 4

RECEIVED WITH
SUR. GEN'L'S LETTER
MAY 8 1885
44435

Sec 16

Sec 21

Sec 28

Bluff Sec 33

Sec 6
T⁸N., R. 29W.

Public Land surveyed in 1880 . . . 6,914.79 Acres
1883 . . . 9,616.60 . . .
Aggregate Area of Public Land . . . 16,531.39 Acres
Estimated . . . Lot N^o 37 . . . 6,557.61 . . .
Aggregate . . . 23,089.00 . . .

Surveys Designated	By whom surveyed	Date of Contract	Amount of Surveys	When Surveyed	Mean Declin
East Boundary of Township	J. H. Glover	January 26 th 1880	Chgd. in form acct	1881	
Part of N Bdy	"	"	2 mls 79 chs 71 1/2 s	1883	14 th East
" S	"	"	3 . 32 . 67	1883	14 th East
Section lines	"	"	71 . 44 . 85	1883	14 th East
Connecting lines	"	"	2 ml 66 . 20	June 19 th 1883	

The above map of Township N^o 9 North, Range N^o 30 West, San Bernardino Meridian, is strictly conformable to the field notes of the surveys here of on file in this Office, which have been examined and approved.
Surveyor General's Office,
San Francisco, California
May 8th 1885

W. H. Brown

U.S. Sur Gen. Gal.