

# TOWNSHIP 9 NORTH, RANGE 31 WEST, OF THE SAN BERNARDINO MERIDIAN, CALIFORNIA.

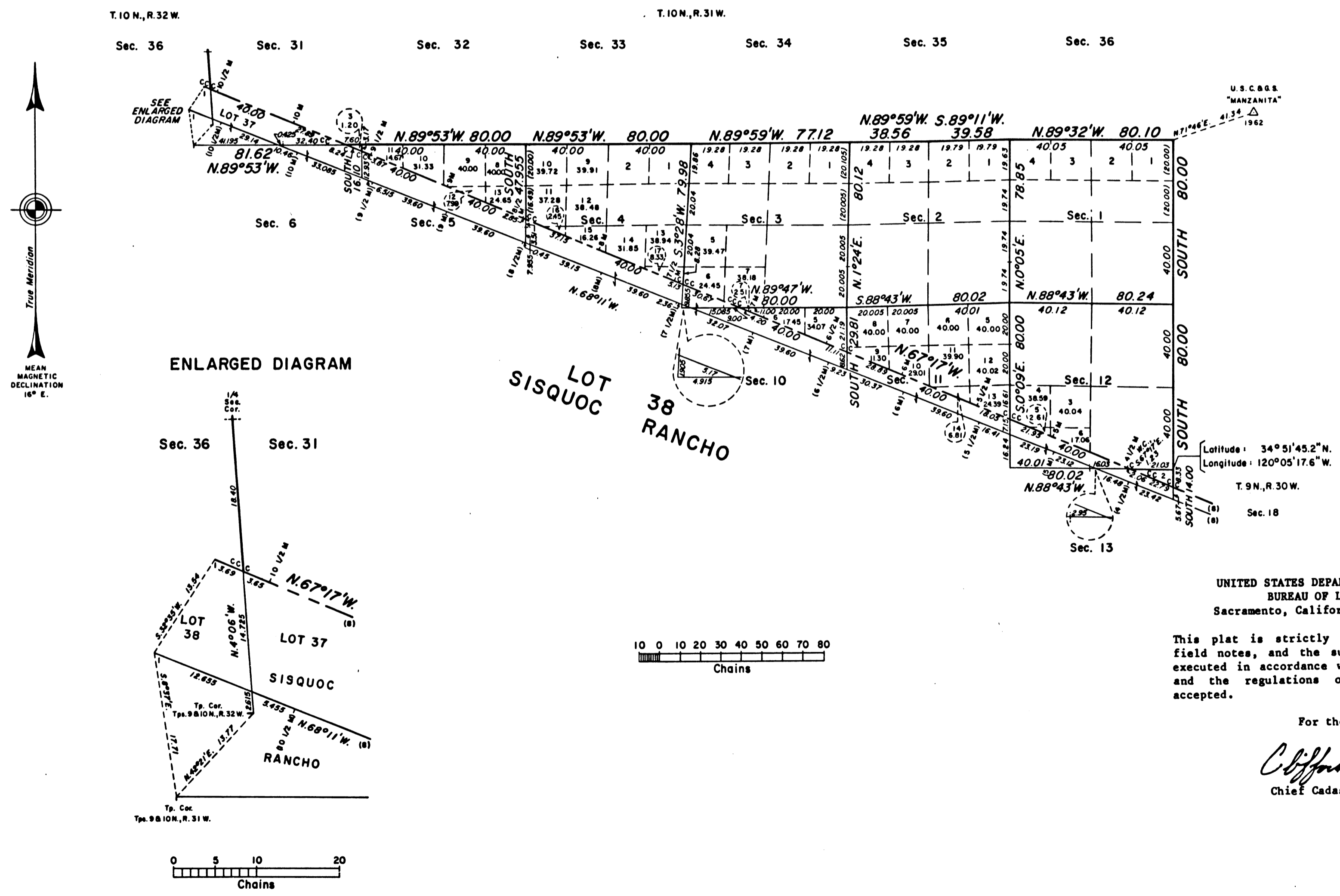
## DEPENDENT RESURVEY

A history of surveys is contained in the field notes.

This plat represents the dependent resurvey of the north boundary of the Sisquoc Rancho, in Tps. 9 and 10 N., Rs. 31 and 32 W., and the north and east boundaries and subdivisional lines, designed to restore the corners and subdivisional lines, designed to restore the corners in their true original locations according to the best available evidence, T. 9 N., R. 31 W., of the San Bernardino Meridian, California.

Except as indicated hereon, the lottings and areas are as shown on the plat approved October 15, 1880.

Surveys executed by Jack W. Rabadew, Supervisory Cadastral Surveyor, beginning June 17, 1980, and completed October 15, 1982, pursuant to Special Instructions dated May 28, 1980, for Group No. 770, and Special Instructions dated February 27, 1981, and Supplemental Special Instructions No. 1, dated August 6, 1982, for Group No. 779, California.

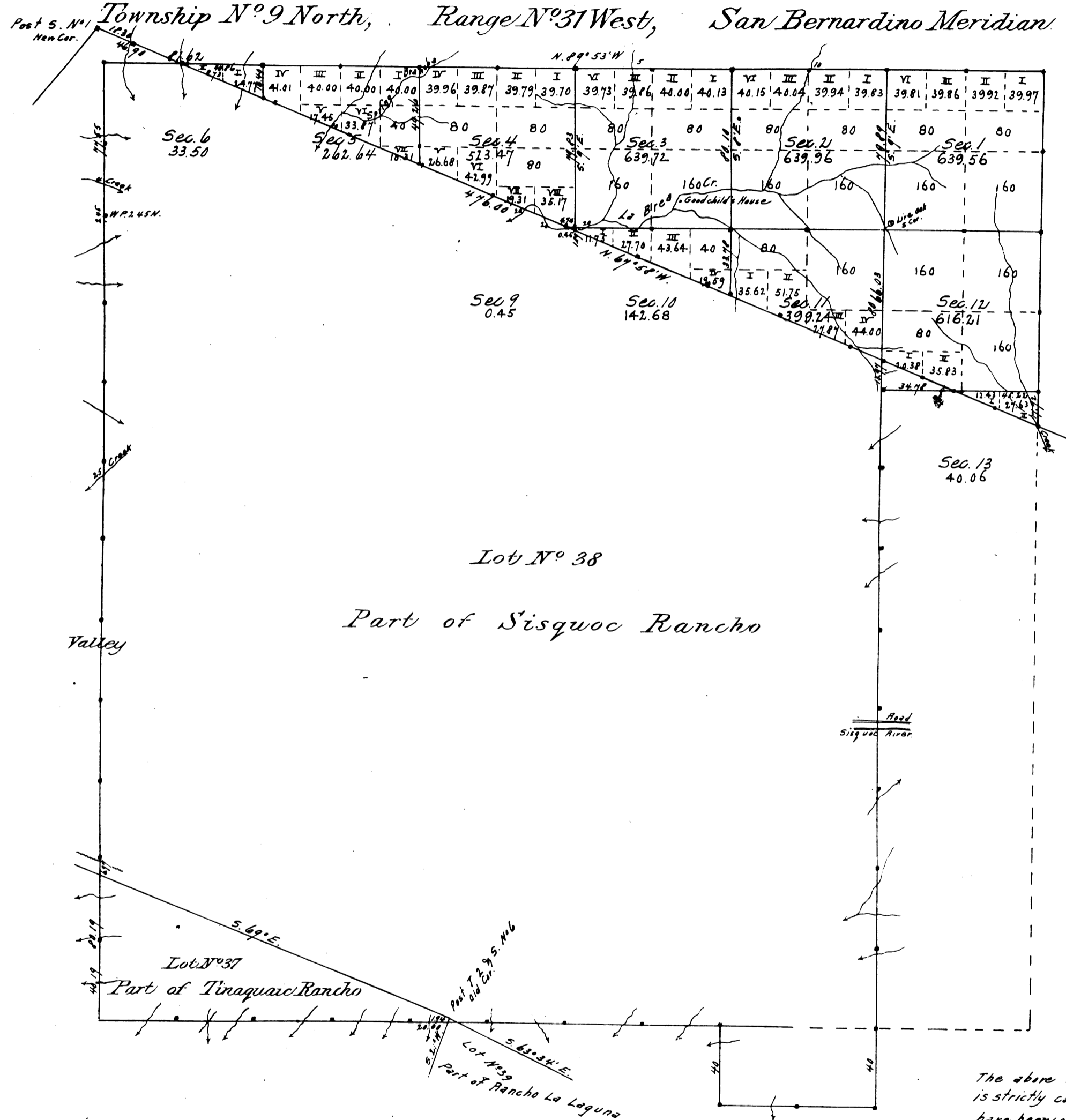


UNITED STATES DEPARTMENT OF THE INTERIOR  
BUREAU OF LAND MANAGEMENT  
Sacramento, California October 7, 1983

This plat is strictly conformable to the approved field notes, and the survey, having been correctly executed in accordance with the requirements of law and the regulations of this Bureau, is hereby accepted.

For the Director  
*Clifford A. Robinson*  
Chief Cadastral Surveyor

Rec<sup>d</sup> with Surveyor General, letter of Oct. 15, 1880



Aggregate Area of Public Land 3,937.49 Acres  
 Estimated Area of Private Grants 19,140.00  
Aggregate 23,077.49

Note - The Township lines not colored blue and the lines colored brown were surveyed by Glorier but are not charged.

The above Map of Township N°9 North, Range N°31 West, San Bernardino Meridian is strictly conformable to the field notes of the surveys thereof on file in this office, which have been examined and approved.  
 U.S. Surveyor General's Office,  
 San Francisco, California.  
 October 15<sup>th</sup> 1880

Theo Wagner  
 U.S. Surr Gen. Cal.

Surveys Designated	By Whom Surveyed	Date of Contract	Amount of Surveys	When surveyed	Magnetic Decl.
Township Lines colored red	A. W. Norris	June 3 <sup>d</sup> 1854		1854	14° 5' E.
Lines colored green	"	December 8 <sup>th</sup> 1857		1858	14° 8' E.
Lines colored yellow	"	October 14 <sup>th</sup> 1858		1858	"
Boundaries of Lot N°37	J. E. Farrell	Instr April 26 <sup>th</sup> 1858		1859	14° 5' E.
" " " " " "	"	" Aug 1 <sup>st</sup> 1860		1860	14° 5' E.
" " " " " "	"	"		1865	"
Township Lines colored blue	Located by U.S. Surr Gen	January 26 <sup>th</sup> 1880	9 mls. 26chs 89/10s	1880	15° 30' E.
B'ds of Lot N°38 colored blue surveyed	J. P. Glorier	"	5 " 76 " 80 "	1880	15° 3' E.
Section Lines	"	"	9 " 26 " 86 "	March 22 <sup>d</sup> 1880	15° 30' E.