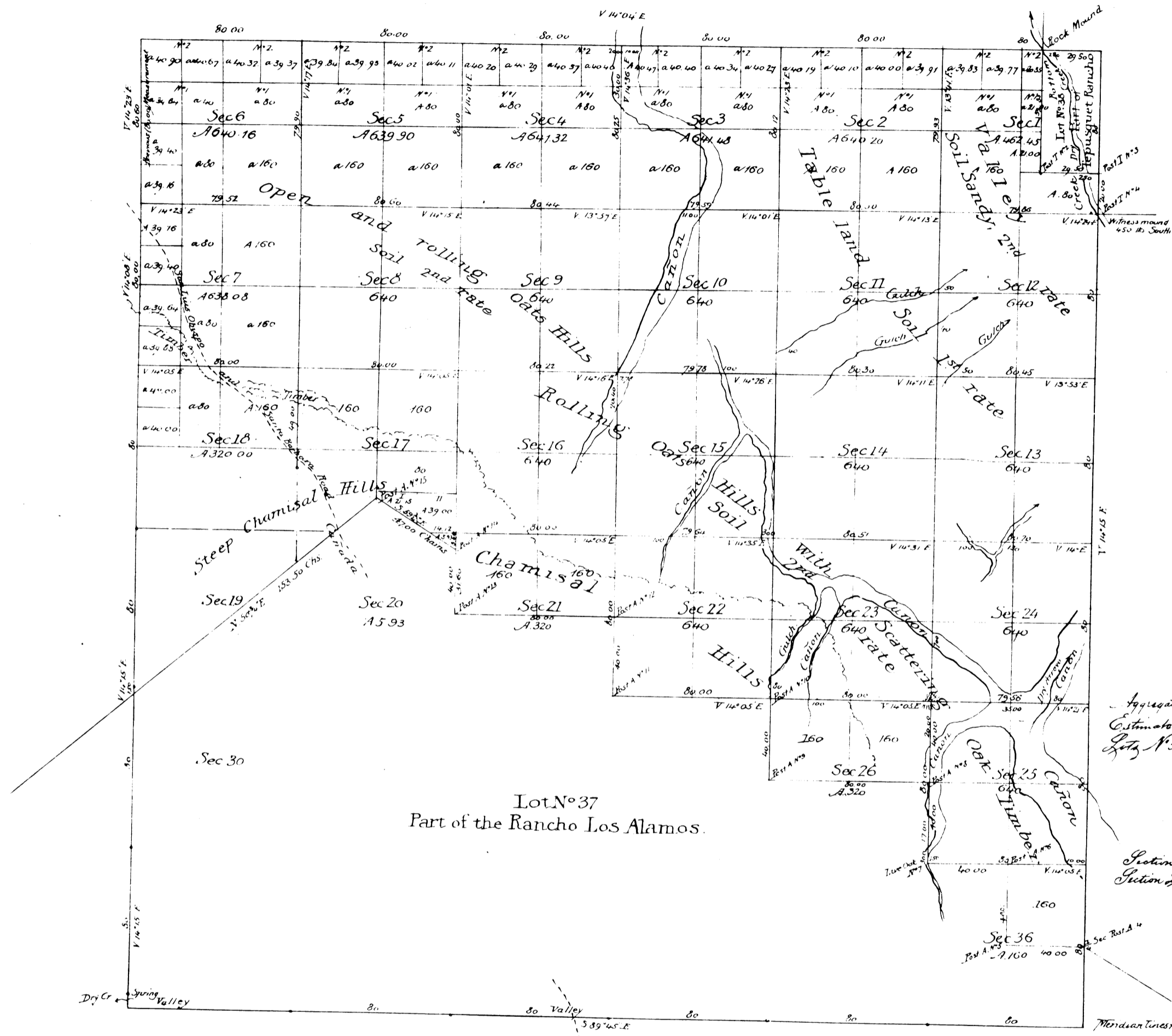


Township N^o IX North, Range N^o XXXIII West, San Bernardino Meridian.

Recd with Sur. Genl. letter Dec 20 1860



Aggregate Area of Public Lands (Surveyed) 14,269 67 Acres
 Estimated Area of rest of Township covered by
 Lots N^o 37 & 38 and by steep Chamisal Hills 8,557 64
 Aggregate 22,827 31

Section Lines colored Blue on maps, but not changed in present account
 Section Lines colored Red on maps, and changed in present account

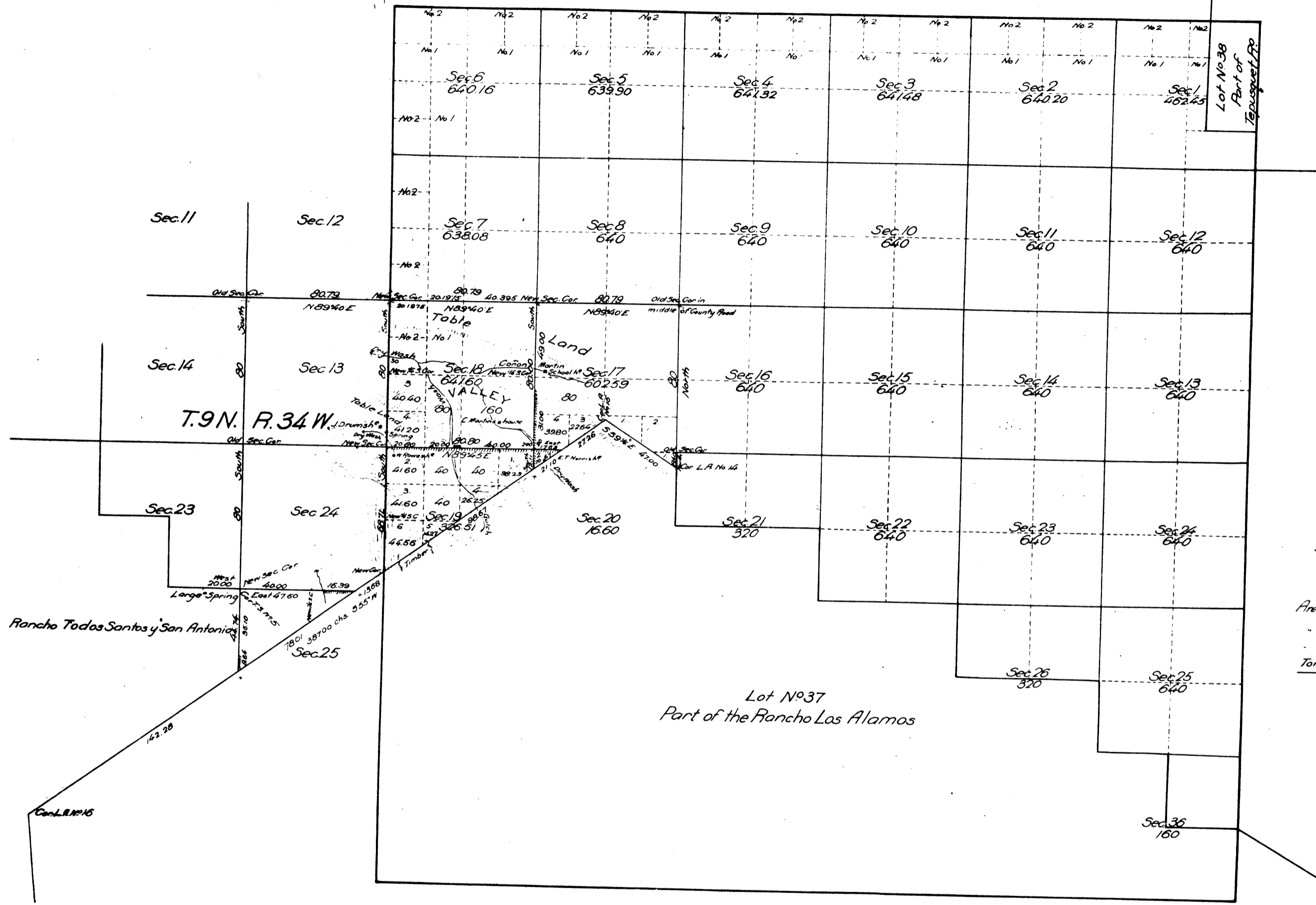
Survey Designated	By whom Surveyed	Date of Contract	Amount of Survey when Surveyed	Year
Township Lines	R. M. Stone	June 2 ^d 1854	24 02 00	1854
North & East of Red Branch of San Bernardino River	J. C. Farrell	August 25 th 1860	8 00 00	1860 (Survey)
Eastern Corner of Lot 37 (1100)		Substantially dated August 1 st 1860	5 71 00	1860
Section Lines		August 25 th 1860	1 29 55	1860
			37 18 35	October 1 st 1860

The above Map of Township N^o IX North Range N^o XXXIII West San Bernardino Meridian is substantially conformable to the field notes of the survey then on file in this Office which have been examined and approved

Surveyor General's Office,
 San Francisco, California,
 December 19th 1860

J. H. Hammond
 Surveyor General California

Township N^o 9 North Range N^o 33 West San Bernardino Meridian.



Area of Public land previously surveyed 14,208.67 Acre
 surveyed by A.M. Powell in 1890 001.22
 Lots No 37 and 38, Private Grants 8,057.62
 Total area of Township 23,068.31

Lot No 37
 Part of the Rancho Las Alamos

Surveys Designated	By Whom Surveyed	Date of Contract	Amount of Surveys Miles Chs. Hrs.	When Surveyed	When Declared
For exhibit of surveys previously executed see map of this township approved December 18, 1890					
Boundaries of Rancho Las Alamos, shaded black dots, retraced	Addison M. Powell	June 3, 1890	0 47 00	1890	1895 E
Shaded black dots, resurveyed	"	"	4 67 00	1890	
Part of boundary of Rancho Las Alamos, shaded black dots, retraced	"	"	1 63 71	1890	
Section lines, shaded black dots, retraced	"	"	6 10 77	1890	
Section lines, shaded black dots, resurveyed	"	"	1 71 60	1890	
marked xxxxxx new survey	"	"	2 7 57	October 13, 1890	

The above map of Township N^o 9 North, Range N^o 33 West, San Bernardino Meridian is strictly conformable to the field notes of the surveys thereof on file in this office, which have been examined and approved
 Surveyor General's Office
 San Francisco, California
 November 2, 1891

J.M. Pratt
 Surv. Genl. Cal.

SEE 4-7