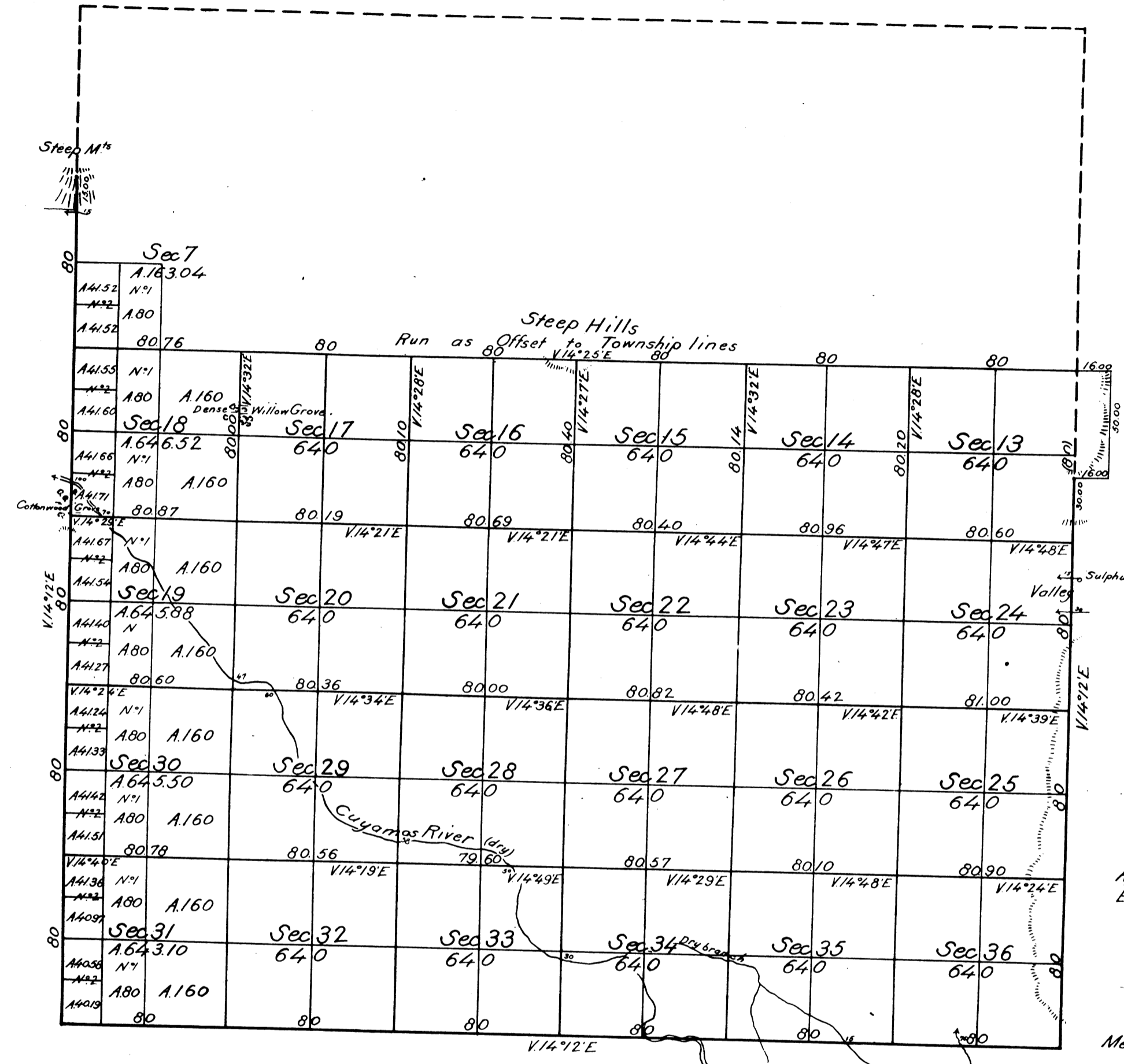


Township N:10 North Range N:25 West San Bernardino Meridian.

E DeK
0x
AD-



Aggregate Area of Public lands (surveyed) 15,544.04 Acres
Estimated Mountain (not surveyed) 7,529.12 ..
Aggregate 23,073.16 ..

Meridian lines not otherwise noted run at a variation of 14° 15' East

Surveys Designated	By whom Surveyed	Date of Contract	Amount of Survey	When Surveyed
Township lines	R.W. Norris	June 3 rd 1854	Mires 15.00.00	1854
Section lines as Offset	" "	December 8 th 1857	6 00.76	1858
Rest of Section lines	" "	" "	38. 10. 26	"

The above Map of Township N:10 North, Range N:25 West (San Bernardino Meridian) is strictly conformable to the field notes of the Surveys thereof, on file in this Office which have been examined and approved, Surveyor General's Office, San Francisco, California, November 19th 1858

J.P. Mendenhall
Surr. Gen. Cal.

TOWNSHIP 10 NORTH, RANGE 25 WEST, OF THE SAN BERNARDINO MERIDIAN, CALIFORNIA.

ORIGINAL

DEPENDENT RESURVEY, AND SUBDIVISION OF SECTIONS

Cuyama Rancho

Lot No.37

BLM Sat. Com. Sta. No. 0604870
Latitude 34°55'38.406"N.
Longitude 119°35'05.941"W.
(NAD 1927)

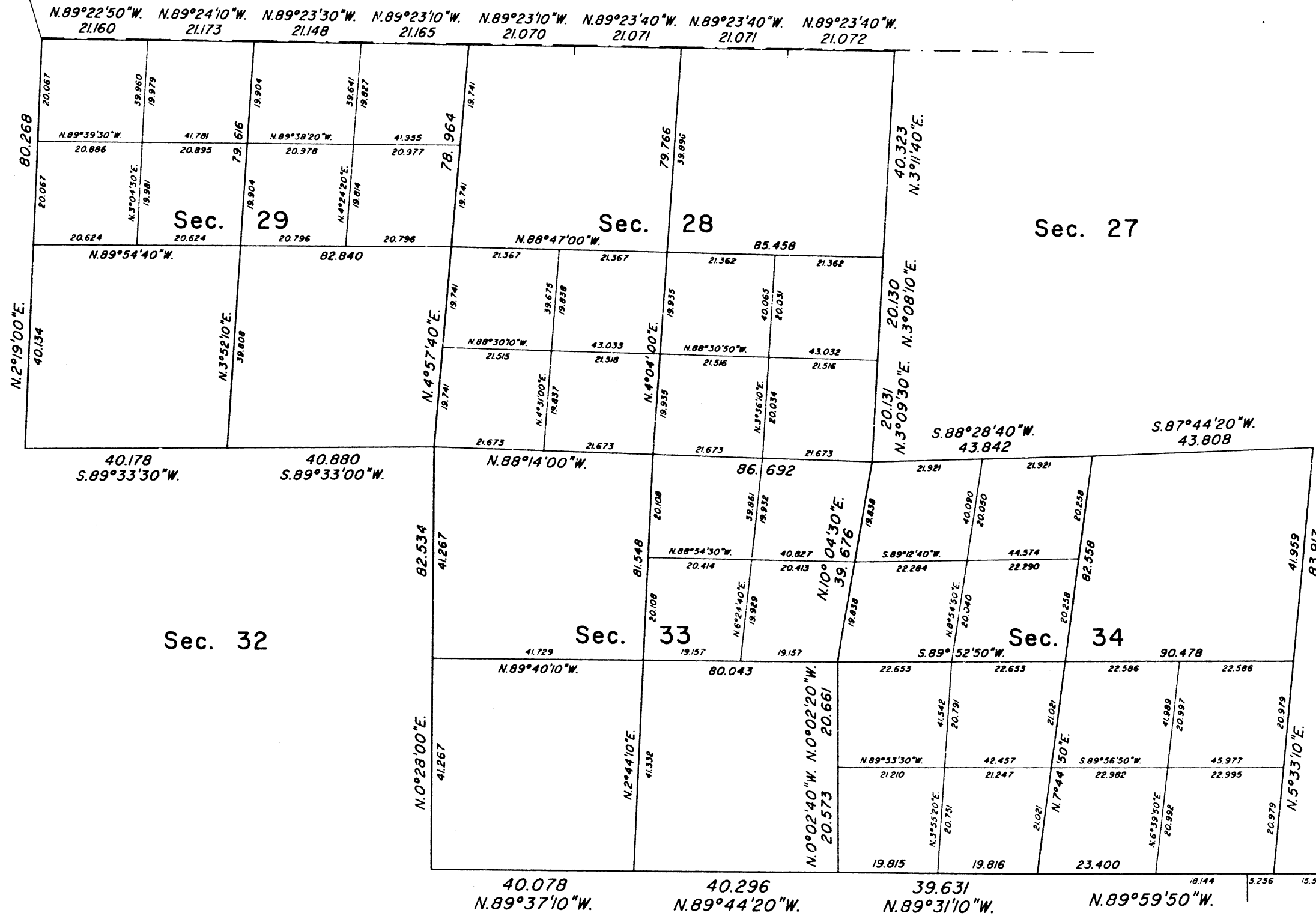
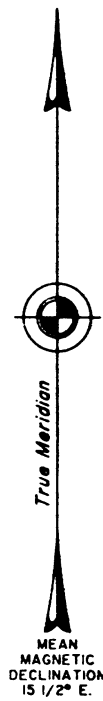
A history of surveys is contained in the field notes.

This plat represents the dependent resurvey of a portion of the south boundary, and a portion of the subdivisional lines, designed to restore the corners in their true original locations according to the best available evidence, and the subdivision of sections 28, 29, 33 and 34, Township 10 North, Range 25 West, San Bernardino meridian, California.

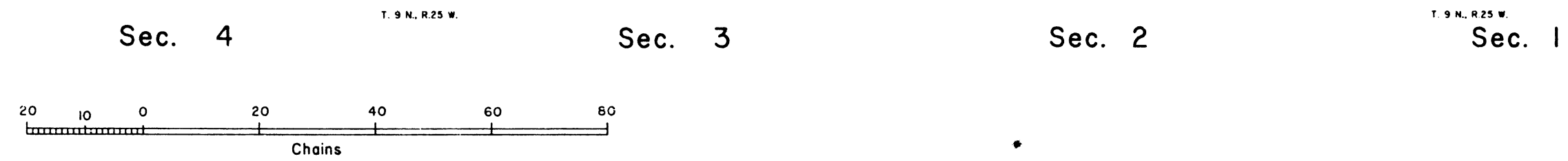
Areas are as shown on the township plat approved November 19, 1858.

Survey was executed by Richard S. Kaiser, Land Surveyor, and Dennis C. Durham, Land Surveyor, beginning October 11, 1989, and completed June 18, 1998, pursuant to Special Instructions dated May 10, 1989, for Group No. 1051, California.

Sec. 30



BLM Sat. Com. Sta. No. 0604880
Latitude 34°53'52.056"N.
Longitude 119°31'15.604"W.
(NAD 1927)



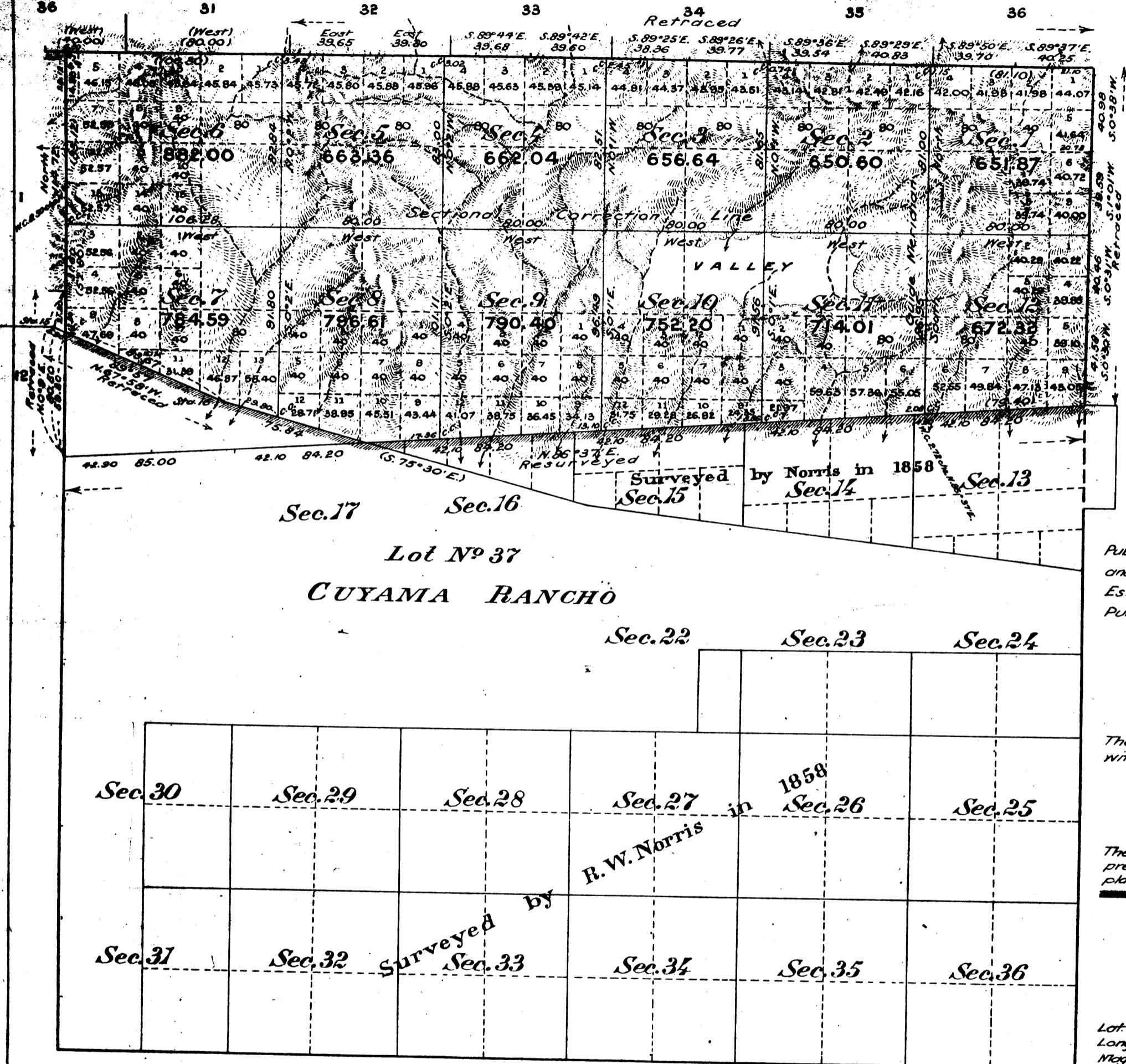
UNITED STATES DEPARTMENT OF THE INTERIOR
BUREAU OF LAND MANAGEMENT
Sacramento, California

This plat is strictly conformable to the approved field notes, and the survey, having been correctly executed in accordance with the requirements of law and the regulations of this Bureau, is hereby accepted.

For the Director
James G. Bly September 28, 1998
Chief Cadastral Surveyor-California

D.ad.

Township N^o 10 North, Range N^o 25 West, San Bernardino Meridian, California.



Area	
Public Land previously surveyed and retained on this plat	9,157.16 Acres
Estimated area of Lot No 37	5,923.65 .
Public Land surveyed by Friel	8,676.64 .
Aggregate	23,763.45 .

The S. 1/2 of Sec. 24, Sections 25 and 36, are within the Santa Barbara National Forest.

The line of demarcation between the areas previously surveyed and retained on this plat and the new surveys is indicated thus: -----

Lot 34° 58' N.
Long. 119° 31' W. } near the Cor. of Secs. 11, 12, 13 and 14.
Mag. Decl. 14° 30' E.

Surveys Designated	By Whom Surveyed	Contract No.	Date	Amount of Survey		When Surveyed	
				Wts.	Chs. Lks.	Began	Completed
Lines previously surveyed, exhibited on plats approved Nov. 19, 1858; Jan. 24, 1876 and Sept. 29, 1879.							
N. bay of Tp. retraced	LeGrand Friel, Compassman for John Victor Lessee	239	October 24, 1905	4	77 18	Oct. 5, 1910	Oct. 8, 1910
E.	"	"	May 21, 1910	2	02 61	Oct. 3, .	Oct. 4, .
W.	"	"	"	1	00 50	Sept. 30, .	Sept. 30, .
W.	"	"	"	1	34 72	Oct. 29, .	Oct. 29, .
Rancho lines retraced	"	"	"	1	09 57	"	"
Section Lines resurveyed	"	"	"	6	26 00	" 8, .	" 13, .
Section Lines	"	"	"	17	25 19	Sept. 28, .	Oct. 28, .
Connections	"	"	"	2	51 90	"	"

The above map of Township N^o 10 North, Range N^o 25 West, San Bernardino Meridian, California, is strictly conformable to the field notes of the survey thereof, on file in this office, which have been examined and approved.
U. S. Surveyor-General's Office,
San Francisco, California.
January 26, 1912.

E. H. Archer
U. S. Surveyor General for California.

0-111-8
1911-12-10