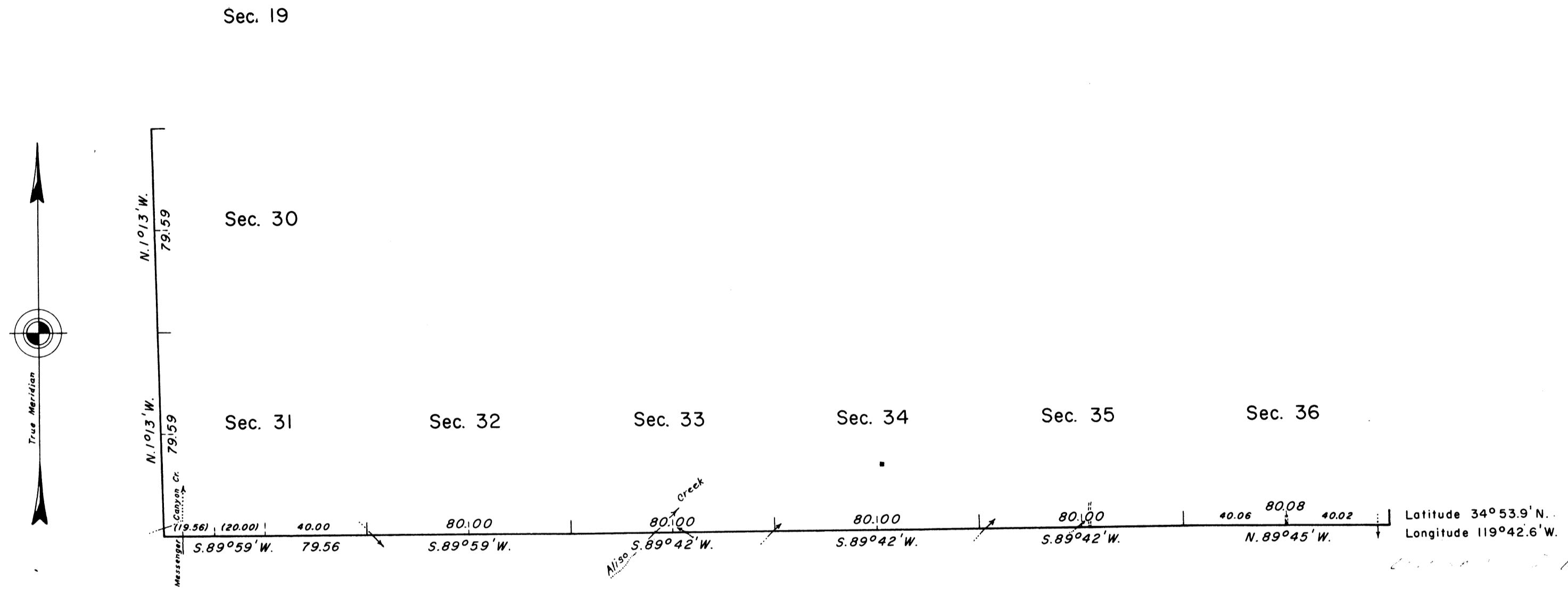


TOWNSHIP 10 NORTH, RANGE 27 WEST, OF THE SAN BERNARDINO MERIDIAN, CALIFORNIA.  
DEPENDENT RESURVEY

79-A



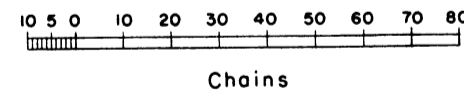
*John P. Jones*

This plat represents a retracement and reestablishment of the south boundary and a portion of the west boundary designed to restore the corners in their true original location according to the best available evidence.

The south boundary and a portion of the west boundary surveyed by J. R. Glover in 1881-1883.

Dependent resurvey of the south boundary and a portion of the west boundary of Township 10 North, Range 27 West, San Bernardino Meridian, California, executed by Roger F. Wilson, December 6 to 22, 1950, under Special Instructions dated December 4, 1950, which provide for the surveys included under Group 384, California.

Timber in this area consists of sycamore, oak, and cottonwood.



**RECEIVED**  
OCT 18 1960  
County Surveyor  
Santa Barbara County

UNITED STATES DEPARTMENT OF THE INTERIOR  
BUREAU OF LAND MANAGEMENT  
Washington, D. C. July 14, 1960

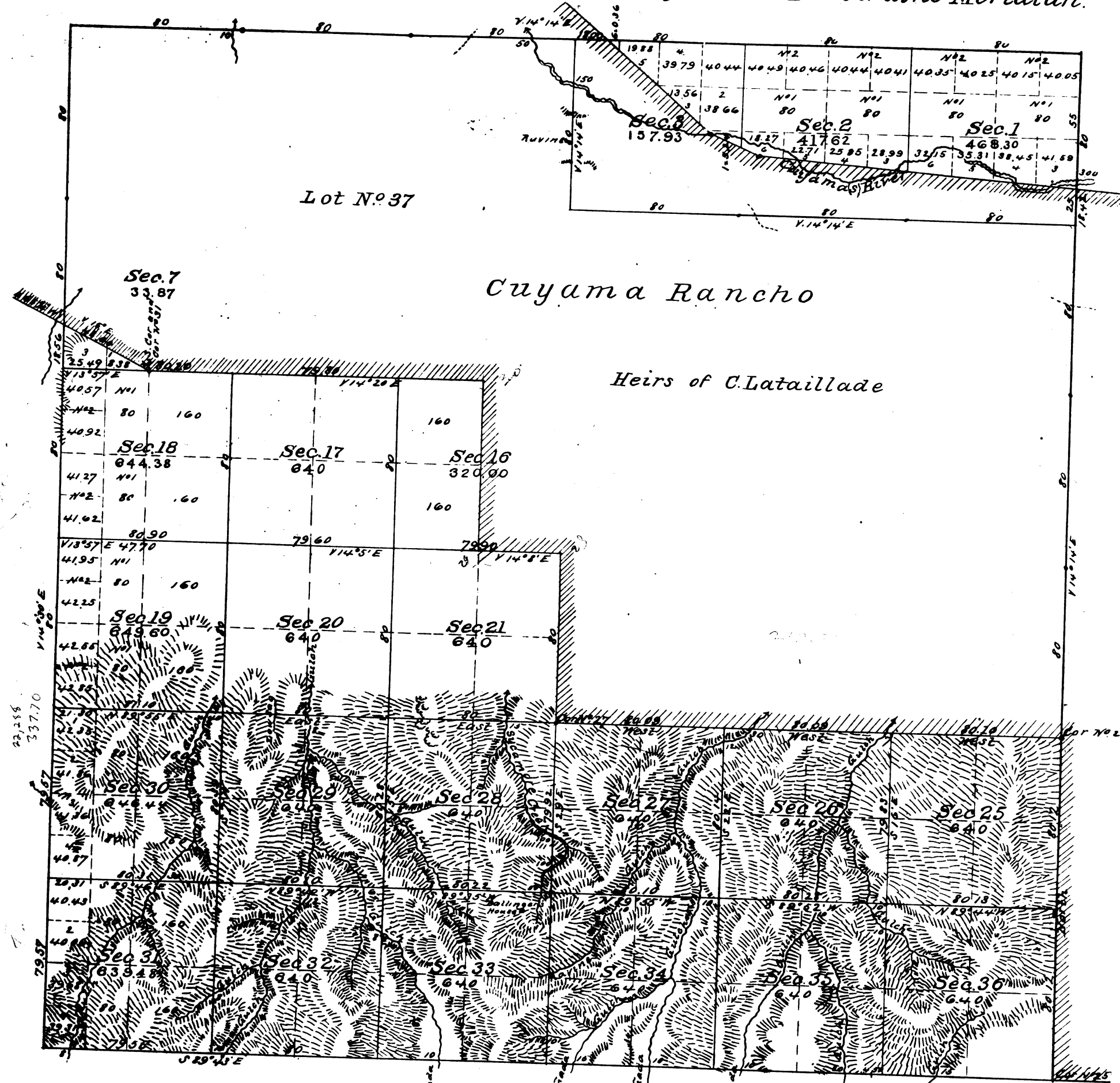
This plat is strictly conformable to the approved field notes, and the survey, having been correctly executed in accordance with the requirements of law and the regulations of this Bureau, is hereby accepted.

For the Director

*Donald Clement*

Cadastral Engineering Staff Officer

Township N<sup>o</sup>. 10 North, Range N<sup>o</sup>. 27 West, San Bernardino Meridian.



Received with Sur Genl's letter  
May 8 1885

Public Land previously surveyed	4,771.70 Acres
" " " surveyed by Glover	7,525.92 " "
Aggregate Area of Public Land	12,297.62 Acres
Estimated " Lot No 37	10,768.88 " "
Aggregate	23,066.50 " "

Survey Designated	By whom surveyed	Date of Contract	Amount of Survey	When surveyed	Mean Meridian
Part of S. 27 of T. 10 N. R. 27 W.	J. R. Glover	January 28 <sup>th</sup> 1880	4 mls 15chs 20 lks	1881	14° 30' East
" " N. 27 of T. 10 N. R. 27 W.	"	"	1 ml 79 " 14 "	1883	
" " S. 27 of T. 10 N. R. 27 W.	"	"	1 " 77 " 56 "	1883	
Branch S. 27 lines resurveyed	"	"	3 mls 48 " 25 "	1885	
Section lines	"	"	3 " 1 " 10 "	1885	
Section lines	"	"	16 " 1 " 72 "	May 18 <sup>th</sup> 1885	

The above map of Township N<sup>o</sup>. 10 North, Range N<sup>o</sup>. 27 West San Bernardino Meridian is strictly conformable to the field notes of the surveys thereof on file in this office, which have been examined and approved.  
Surveyor General's Office,  
San Francisco California  
May 8<sup>th</sup> 1885

*W. H. Brown*  
Sur Genl.