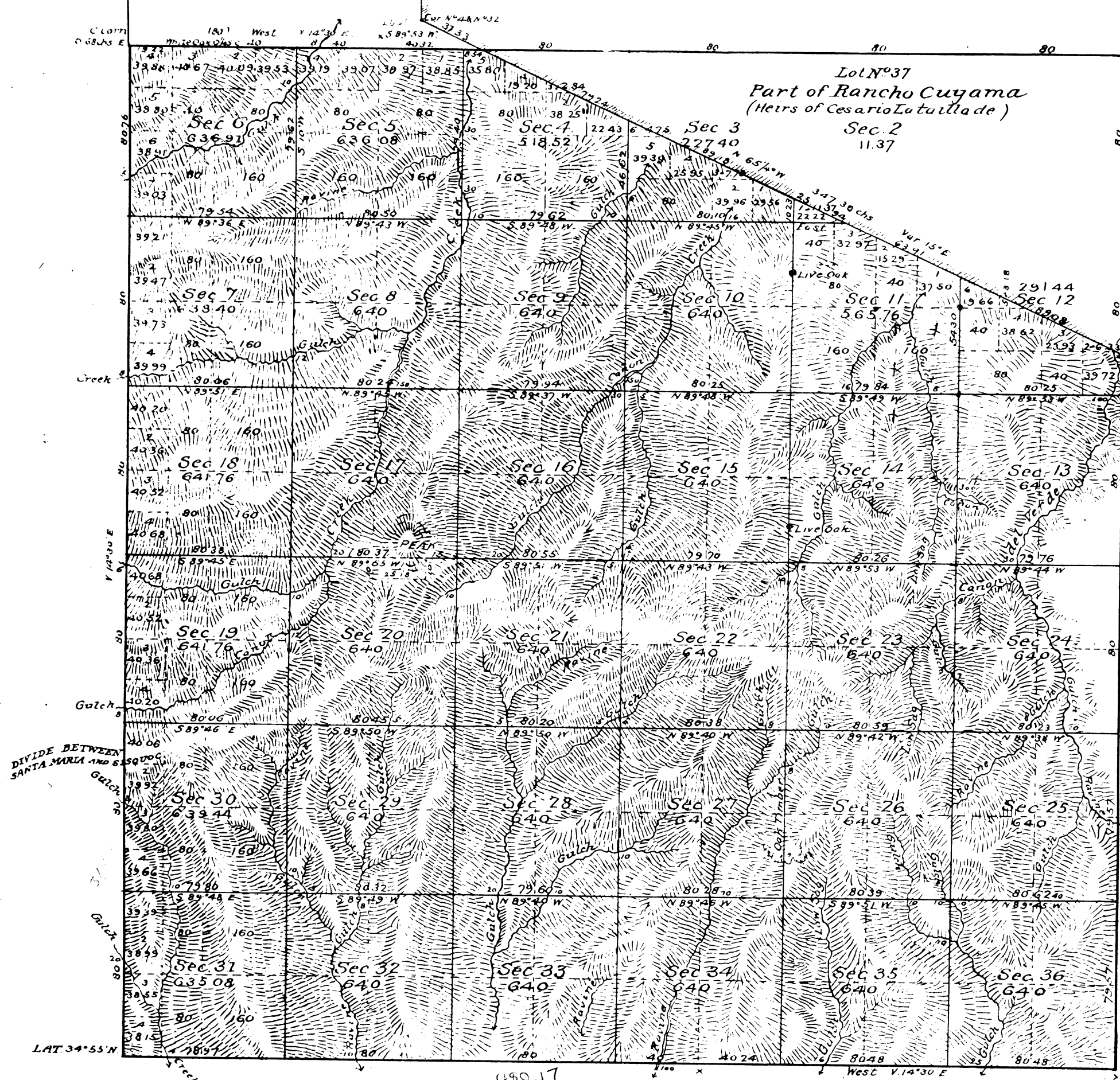


Township No 10 North Range No 28 West, San Bernardino Meridian.



RECEIVED WITH  
SUR GEN'L'S LETTER  
MAY 8 1885

44435

Aggregate Area of Public Land . . . . . 20,803.92 Acres  
Estimated . . . Private Grant . . . . . 2,223.08 . . .  
Aggregate . . . . . 23,027.00 . . .

Surveys Designated	By whom surveyed	Date of Contract	Amount of surveys	When surveyed	Mean Decltn
Part of N. Bay of Tp	R. W. Norris	June 3 <sup>rd</sup> 1854		1854	
Township lines		December 8 <sup>th</sup> 1857		1858	
Boundaries of Lot No 37	R. R. Harris	11st May 23 <sup>rd</sup> 1872		1872	
Part of S. Bay of Tp	J. R. Glover	January 26 <sup>th</sup> 1880	chrgd in form acct	1881	
" " " "			1ml 28chs 261ks	1883	
" " " "				1883	
" " " "				1883	
West Bay of Tp			2 mls 41 - 70	1883	
Ranch Bay resurveyed			6 - 0 - 76	1883	14° 30 East
Section lines			4 - 27 - 33	1883	
Connecting line on N. by Sec 6			55 - 56 - 67	1883	
			3 - 18 - 95	July 5 <sup>th</sup> 1883	

The above map of Township No 10 North, Range No 28 West, San Bernardino Meridian, is strictly conformable to the field notes of the surveys thereof on file in this Office, which have been examined and approved.  
Surveyor General's Office,  
San Francisco California  
May 8<sup>th</sup> 1885

*W. H. Brown*  
Sur Gen. Cal.