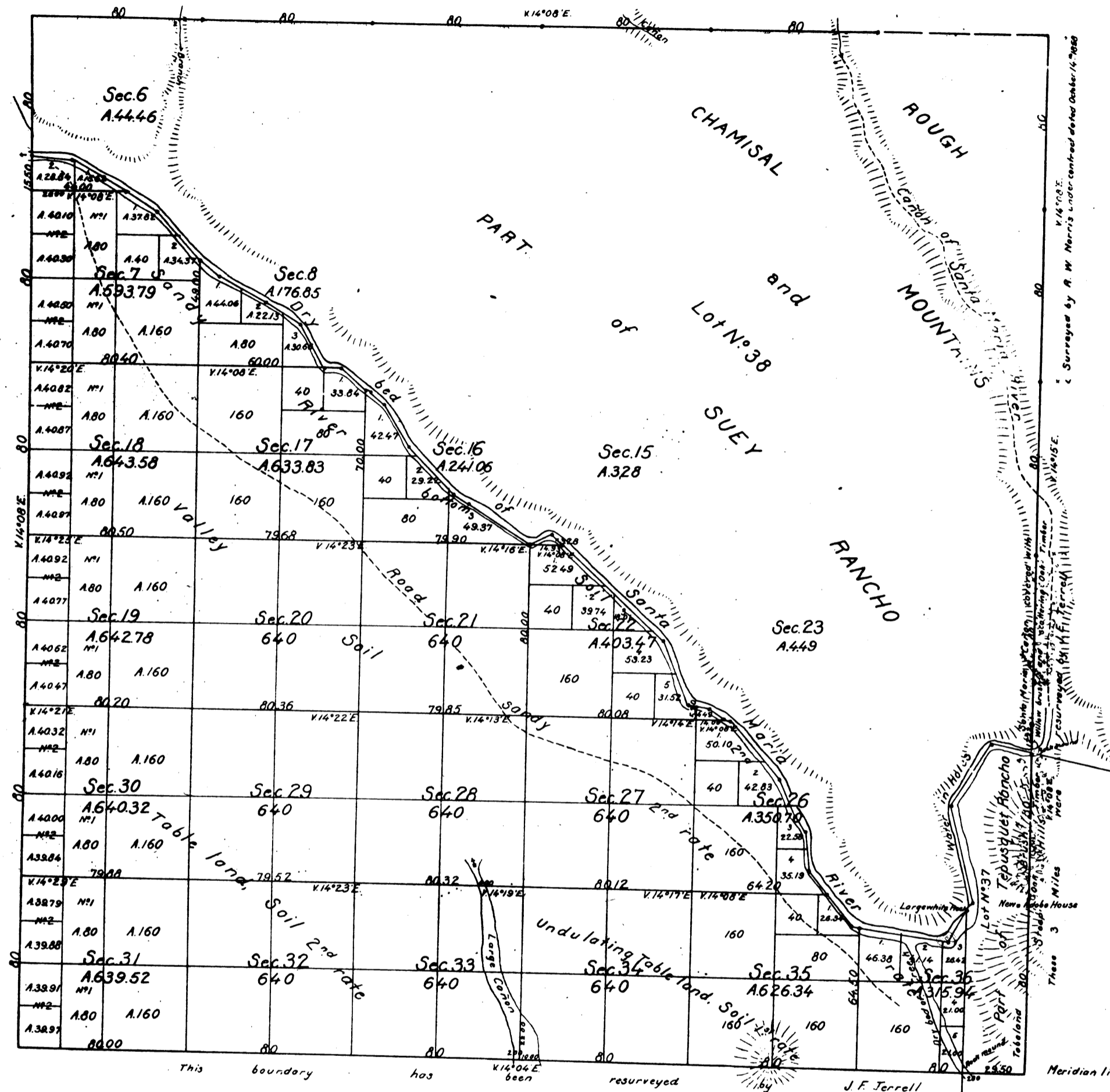


Township N° 10 North Range N° 33 West San Bernardino Meridian.



Exterior boundaries of Lot N° 38

N°	Course	Distance	N°	Course	Distance
1	S 14° 2' E	45.00	2	S 14° 2' E	45.00
3	S 14° 2' E	45.00	4	S 14° 2' E	45.00
5	S 14° 2' E	45.00	6	S 14° 2' E	45.00
7	S 14° 2' E	45.00	8	S 14° 2' E	45.00
9	S 14° 2' E	45.00	10	S 14° 2' E	45.00
11	S 14° 2' E	45.00	12	S 14° 2' E	45.00
13	S 14° 2' E	45.00	14	S 14° 2' E	45.00
15	S 14° 2' E	45.00	16	S 14° 2' E	45.00
17	S 14° 2' E	45.00	18	S 14° 2' E	45.00
19	S 14° 2' E	45.00	20	S 14° 2' E	45.00
21	S 14° 2' E	45.00	22	S 14° 2' E	45.00
23	S 14° 2' E	45.00	24	S 14° 2' E	45.00
25	S 14° 2' E	45.00	26	S 14° 2' E	45.00
27	S 14° 2' E	45.00	28	S 14° 2' E	45.00
29	S 14° 2' E	45.00	30	S 14° 2' E	45.00
31	S 14° 2' E	45.00	32	S 14° 2' E	45.00
33	S 14° 2' E	45.00	34	S 14° 2' E	45.00
35	S 14° 2' E	45.00			

Boundaries of Tepusquet Rancho

N°	Course	Distance	N°	Course	Distance
1	N 68° 1/2' W	20.85	2	South	74.15
3	S 30° 1/2' W	36.00	4	South boundary of Township	
5	South	66.83	6	South	74.15
7	South	74.15	8	South	74.15
9	South	74.15	10	South	74.15
11	South	74.15	12	South	74.15
13	South	74.15	14	South	74.15
15	South	74.15	16	South	74.15
17	South	74.15	18	South	74.15
19	South	74.15	20	South	74.15
21	South	74.15	22	South	74.15
23	South	74.15	24	South	74.15
25	South	74.15	26	South	74.15
27	South	74.15	28	South	74.15
29	South	74.15	30	South	74.15
31	South	74.15	32	South	74.15
33	South	74.15	34	South	74.15
35	South	74.15			

Aggregate Area of Public lands (surveyed) 11,080.89 Acres
 Estimated Area of Rest of Township covered by Lots N° 37 & 38 and by rough Chamisal Mountains 11,959.11
 Aggregate 23,040.00

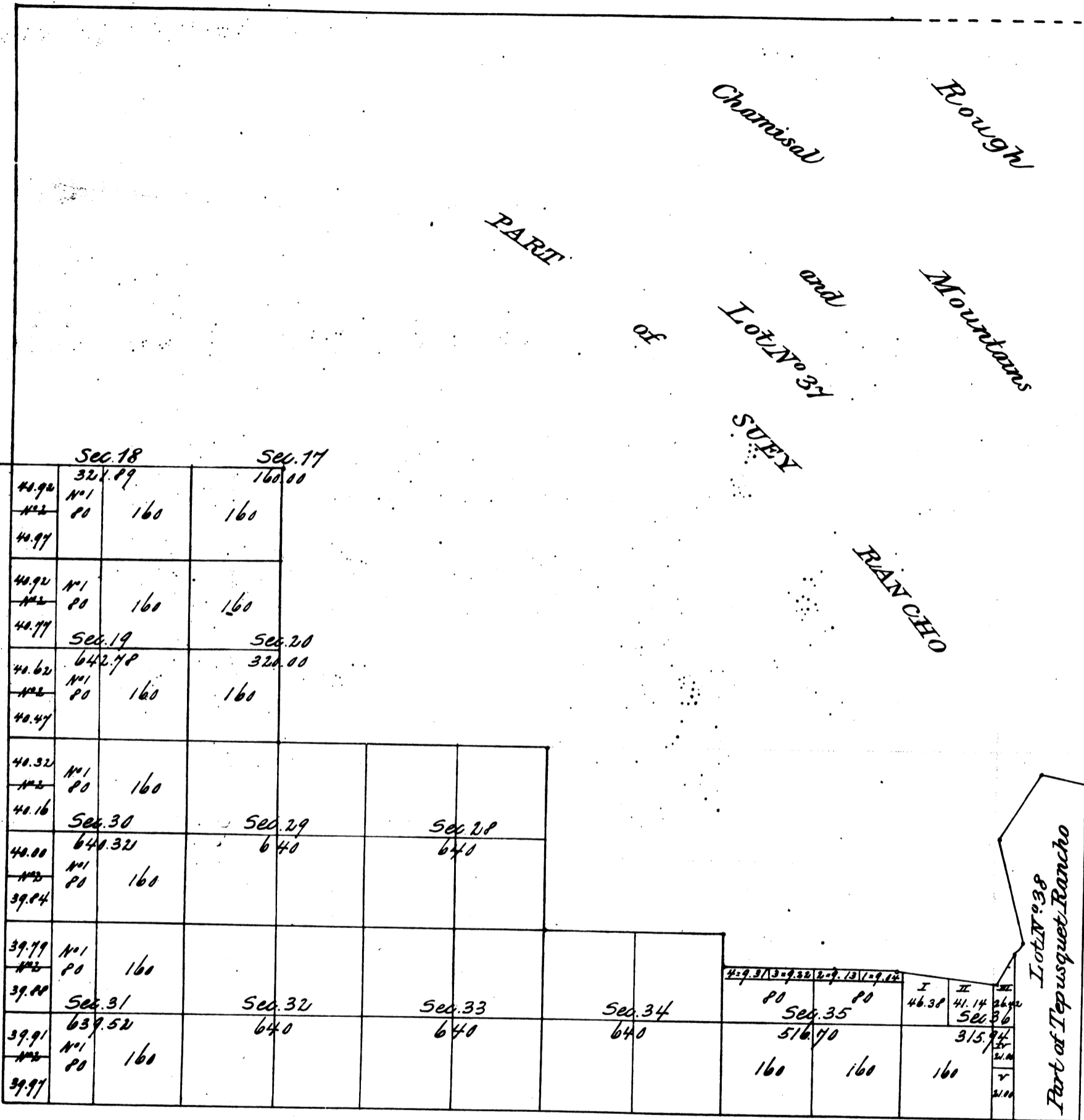
Surveys Designated	By Whom Surveyed	Date of Contract	Amount of Survey	When Surveyed
North West Quarter of East boundary of Township	R. W. Norris	June 3 rd 1854	21.00.00	1854
Rest of East boundary of Township	-	October 14 th 1858	2.00.00	1859
South West Quarter of East boundary of Township	J. E. Terrell	August 25 th 1860	3.00.00	1860
Exterior boundaries of Lot N° 37	-	instructions dated August 1 st 1860	2.19.28	1860
Section lines	-	August 25 th 1860	28.66.74	1860
Meridian lines	-	-	7.58.77	October 21 st 1860

The above Map of Township N° 10 North, Range N° 33 West (San Bernardino Meridian) is strictly conformable to the field notes of the surveys thereon file in this Office, which have been examined and approved.
 Surveyor General's Office
 San Francisco California
 December 18th 1860

J. F. Terrell
 Surv. Gen. Cal.

SEE FIELD NOTES OF SECTIONS 31 AND 32 IN ENVELOPE IN FRONT COVER OF BOOK.

Township N^o 10 North, Range N^o 33 West, San Bernardino Meridian.



Rec^d with Sur. Gen's letter of Aug 11, 1877

Aggregate Area of Public lands surveyed 6757.15
 Estimated Area of Rest of Township covered by
 Lots 37730 and by rough Chemisal Mountains 16202.85
 Aggregate 23,040.00

Surveys Designated	By whom surveyed	Date of Contract	Am't of Surveys	When surveyed
Eastern boundaries of Lot N34	G. H. Thompson	Instructions February 20 th 1863		1863

The above Map of Township N^o 10 North, Range N^o 33 West San Bernardino Meridian, is strictly conformable to the field notes of the surveys thereof, on file in this office, which have been examined and approved.
 Surveyor General's Office
 San Francisco, California
 July 3rd 1873.

J. R. Hardenbergh
 Surv. Gen. Cal^a

This Map has been correctly copied from the Original Map on file in this office as amended and approved July 3rd 1873.
 U. S. Surveyor General's Office
 San Francisco, California
 July 20th 1877.

H. Collins
 U. S. Surv. Gen. Cal^a