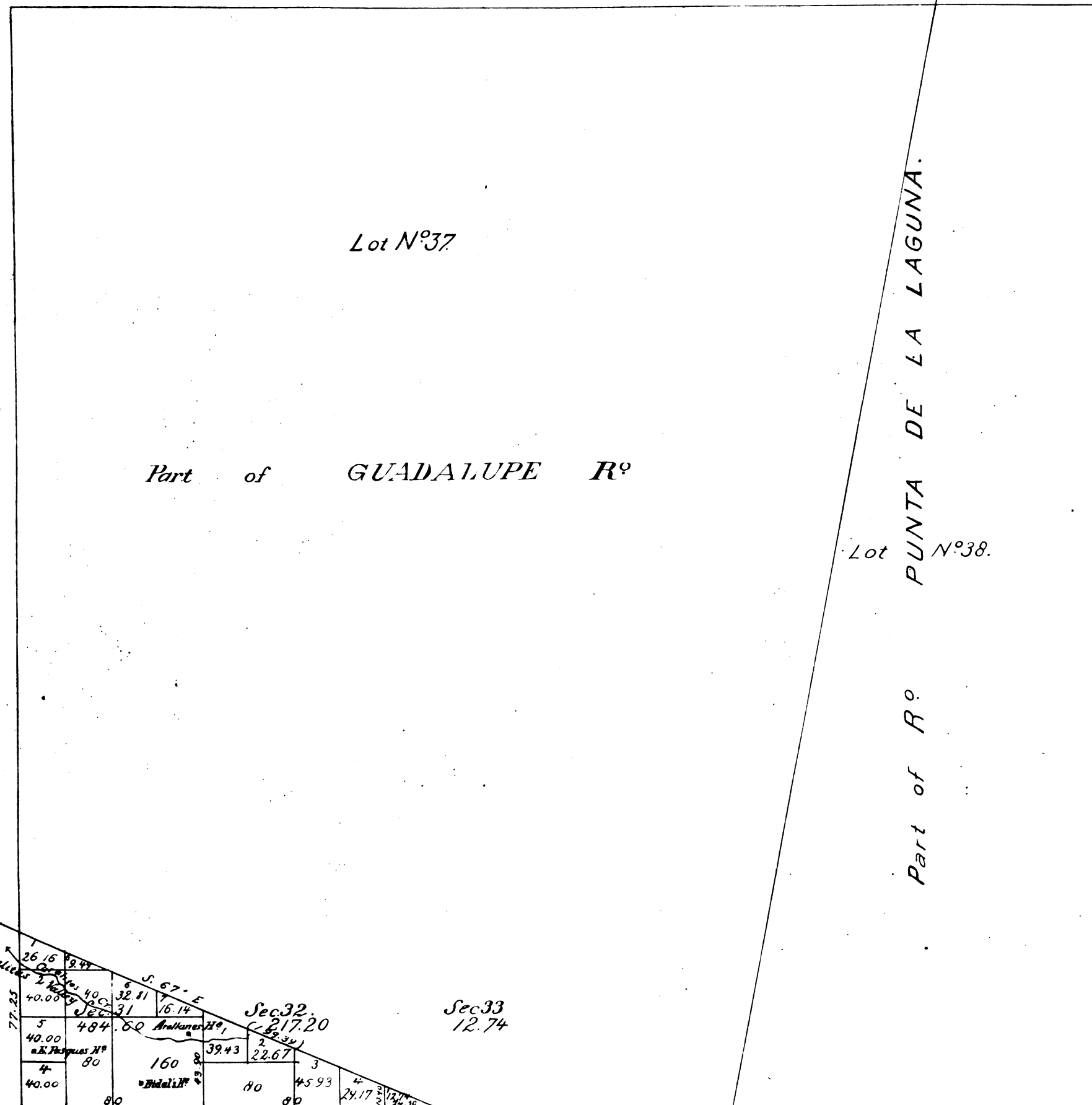


Township N^o 10 North, Range N^o 35 West, San Bernardino Mer.

Recd with S. G. letter of Dec. 11-74



Aggregate Area of Public Land 714.54 Acres
 Estimated Private Grants 22,052.81
Aggregate 22,767.35

Triplicate filed in Registers Office at San Francisco, October 27th. 1874.

Variation reported by Harris, 15° E.

Surveys Designated	By whom surveyed	Date of Contract	Amount of Surveys	When surveyed
Township lines	R. W. Norris	June 3 rd 1854		1854
Boundaries of Lot N°37.	J. E. Terrell	(Inst) Jan ^{ry} 15 th 1860		1860
38.		Aug. 1 st 1860		1860
Township lines colored red (Re-surveyed)	R. H. Harris	October 2 nd 1873	3 Mts. 21 Cts 75 Lks	1873
Ranch lines			2 . 39 . 39 .	1873
Section lines			0 . 54 . 30 .	Oct 30 th 1873

The above Map of Township N^o 10 North, Range N^o 35 West, San Bernardino Meridian is strictly conformable to the field notes of the surveys thereof, on file in this Office, which have been examined and approved.
 Surveyor General's Office,
 San Francisco California,
 October 26th 1874.

J. S. Stanton
 Surv Genl Cal