

UNITED STATES  
DEPARTMENT OF THE INTERIOR  
BUREAU OF LAND MANAGEMENT

**ORIGINAL**

FIELD NOTES  
OF  
THE REMONUMENTATION OF  
A SPECIAL MEANDER CORNER IN SECTION 34,  
IN  
TOWNSHIP 10 NORTH, RANGE 36 WEST,  
OF THE  
SAN BERNARDINO MERIDIAN,  
IN THE STATE OF CALIFORNIA.

EXECUTED BY

Gregory J. Aten, Cadastral Surveyor

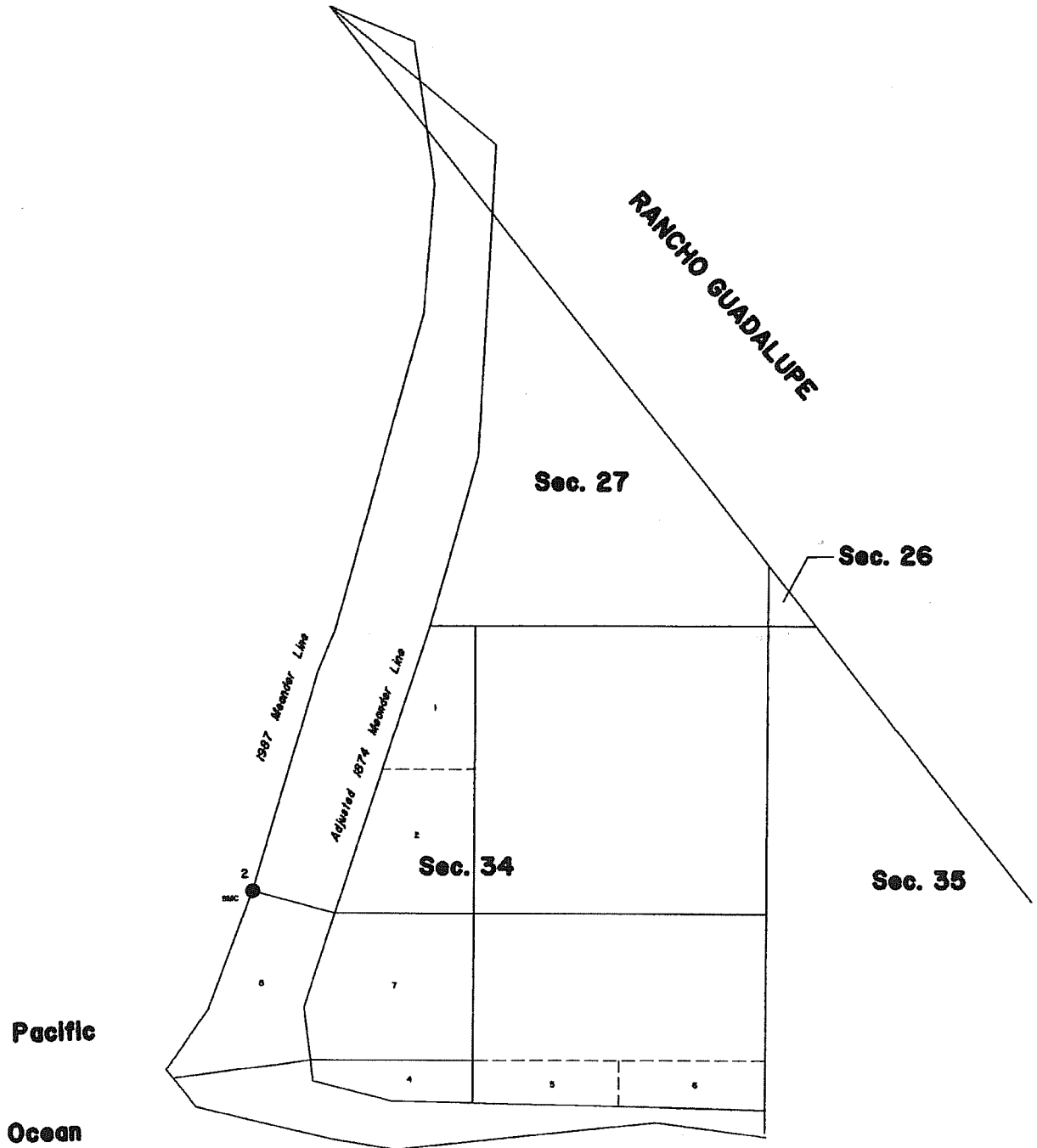
Under Special Instructions dated and approved August 6, 1998,  
and Assignment Instructions dated and approved November 29, 2007,  
which provided for the remonumentation included  
under Group No. 1290, California.

Survey commenced June 13, 2007

Survey completed June 13, 2007

# INDEX DIAGRAM

**TOWNSHIP 10 NORTH, RANGE 36 WEST, S.B.M.**



T. 10 N., R. 36 W., San Bernardino Meridian, California

---

The following field notes describe the remonumentation of a special meander corner in section 34, Township 10 North, Range 36 West, San Bernardino Meridian, California.

History of pertinent surveys

1985-88 - Roger J. Mercer, Supervisory Cadastral Surveyor, and Douglas J. Jacobson, Cadastral Surveyor, dependently resurveyed the boundaries of fractional section 34, and a portion of the 1874 meander line along the Pacific Ocean. They also surveyed the subdivision of section 34 and the 1987 meander line along the Pacific Ocean under Group No. 931.

The remonumentation of this corner was performed in accordance with the specifications as set forth in the Manual of Surveying Instructions, 1973 edition, and Special Instructions dated August 6, 1998, for Group No. 1290, California.

The remonumentation was executed at the request of Dan Vaughn, Realty Specialist, Bakersfield Field Office, for the purpose of protecting archaeological and natural resources on the public lands in section 34, Township 10 North, Range 36 West, San Bernardino Meridian, California.

The special meander corner being remonumented was originally established during the 1985-88 survey, at a point N.  $72^{\circ}13'55''$  W., 11.897 chs. dist. from the special meander corner located at the intersection of the E and W center line of section 34, with the adjusted 1874 meander line. The brass tablet set during the 1985-88 survey has been removed by vandals; the drill hole in which the brass tablet was set is the only remaining evidence of the corner.

Preliminary to the remonumentation, the position of the drill hole was verified by survey ties to the following corners: (1) the special meander corner recovered at the intersection of the E and W center line of section 34, with the 1874 meander line, and (2) the special meander corner recovered at the intersection of the E and W center line of the SW 1/4 of section 34, with the adjusted 1874 meander line. The record position of these corners were found to be within 3 tenths of a foot relative to the drill hole found at the special meander corner. Real Time Kinematic GPS techniques were used to verify the positions of the previously mentioned corners.

---

Remonumentation of a Special Meander Corner in Section 34,  
T. 10 N., R. 36 W., San Bernardino Meridian, California

---

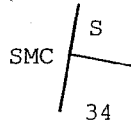
Remonumenting a corner established by  
Roger J. Mercer and Douglas J. Jacobson, in 1985-88

---

The special meander corner, on a partition line normal to the adjusted 1874 meander line, at intersection with the 1987 meander line along the Pacific Ocean, monumented with a drill hole (in which the brass tablet set in the 1985-88 survey had originally been set) in the nearly level top of an outcropping of rock, approximately 10 ft. above sea level.

At the corner point

Set a brass tablet, 3 1/4 ins. diam., 3 1/2 in. stem, in marine epoxy in the drill hole used in the 1985-88 survey, with top marked.



2007

Note: A marine epoxy was used because it is a more permanent adhesive material.

Corner is located on the nearly flat surface of an outcropping of rock, approximately 10 ft. above sea level, at the base of a sandy bluff.

---

FIELD ASSISTANTSBUREAU OF LAND MANAGEMENT PERSONNEL

Thomas J. Fusek	Survey Technician
Thomas E. Jermin III	Survey Technician
Catherine V. Aten	Survey Technician
Daniel Vaughn	Realty Specialist

## CERTIFICATE OF SURVEY

I, Gregory J. Aten, HEREBY CERTIFY upon honor that, in pursuance of Special Instructions bearing date of the 6th day of August, 1998, for Group No. 1290, I have executed the remonumentation of a special meander corner in section 34, Township 10 North, Range 36 West, of the San Bernardino Meridian, California, which are represented in the foregoing field notes as having been executed by me and under my direction; and that said remonumentation has been made in strict conformity with said Special Instructions, the *Manual of Instructions for the Survey of the Public Lands of the United States*, and in specific manner described in the foregoing field notes.

2-04-2008

(Date)

Gregory J. Aten  
(Cadastral Surveyor)

## CERTIFICATE OF APPROVAL

BUREAU OF LAND MANAGEMENT  
Sacramento, California

The foregoing field notes of the remonumentation of a special meander corner in section 34, Township 10 North, Range 36 West, of the San Bernardino Meridian, California, executed by Gregory J. Aten, Cadastral Surveyor, having been critically examined and found correct, are hereby approved.

February 7, 2008  
(Date)

James F. Puley  
(Chief Cadastral Surveyor - California)

TOWNSHIP 10 NORTH, RANGE 36 WEST, OF THE SAN BERNARDINO MERIDIAN, CALIFORNIA.

DEPENDENT RESURVEY, AND SURVEY

RANCHO GUADALUPE

A history of surveys is contained in the field notes.

This plat represents the dependent resurvey of Line 2-5 of Rancho Guadalupe, the boundaries of fractional sections 26 and 34, and a portion of the 1874 meander line along the Pacific Ocean, designed to restore the corners in their true original locations according to the best available evidence, and the survey of the subdivision of section 34, the survey of the 1987 meander line along the Pacific Ocean, and the completion survey of the remaining public land in section 34, Township 10 North, Range 36 West, San Bernardino Meridian, California.

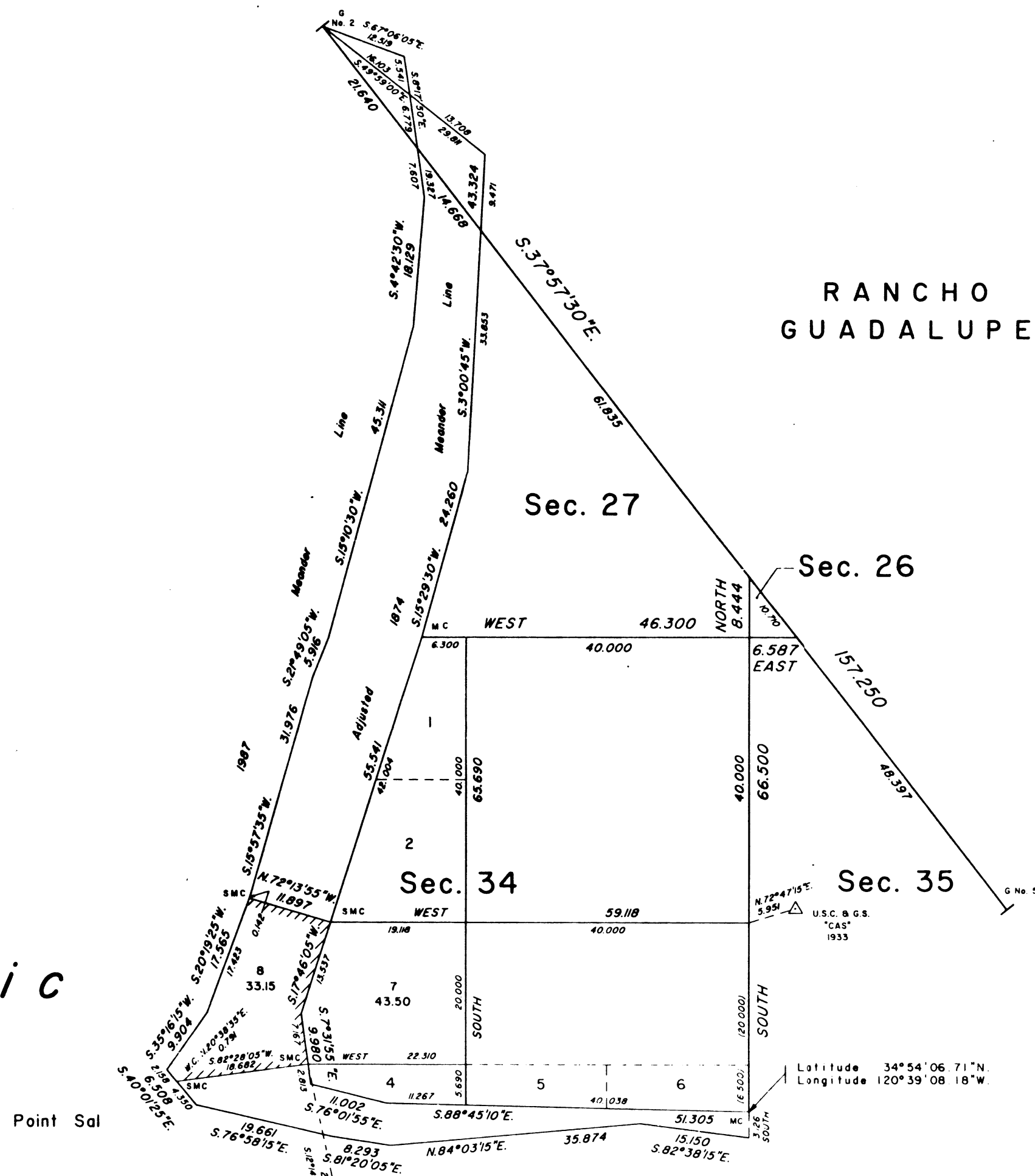
Except as indicated hereon the lottings and areas are as shown on the original township plat approved September 8, 1884.

Survey executed by Roger J. Mercer, Supervisory Cadastral Surveyor, and Douglas J. Jacobson, Cadastral Surveyor, beginning September 3, 1985, and completed February 18, 1988, pursuant to Special Instructions dated July 26, 1985, Supplemental Special Instructions No. 1 dated August 12, 1987, and Amended Special Instructions No. 1 dated January 11, 1988, for Group No. 931, California.



Pacific

Ocean



Meanders of Lion Rock (lot 9, sec. 34) from the A.M.C.

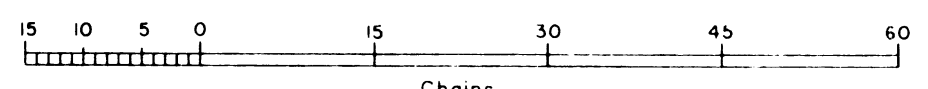
Course	Chains
N 31°18'05"W	0.931
N 78°50'05"W	1.076
S 53°41'35"W	1.247
S 4°02'20"E	1.147
S 74°56'10"E	1.138
N 74°56'15"E	2.11
N 12°42'35"E	0.882 to point of beginning

UNITED STATES DEPARTMENT OF THE INTERIOR  
BUREAU OF LAND MANAGEMENT  
Sacramento, California

This plat is strictly conformable to the approved field notes, and the survey, having been correctly executed in accordance with the requirements of law and the regulations of this Bureau, is hereby accepted.

For the Director

*Clifford A. Robinson July 25, 1988*  
Chief Cadastral Surveyor - California

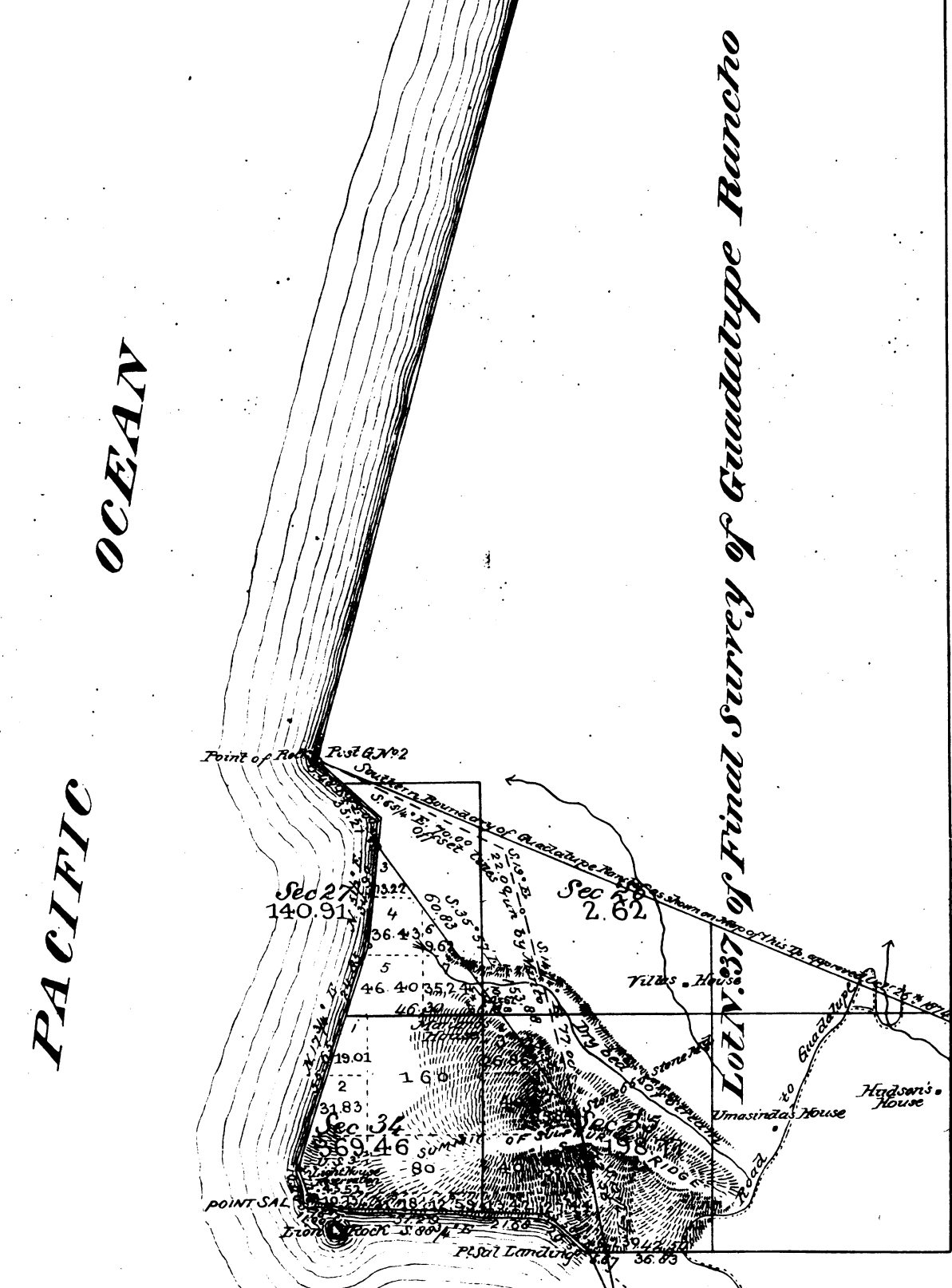


Area Surveyed: 33.57 Acres

D.a.d.

Township N. 10 North, Range N. 36 West, San Bernardino Meridian.

Rec<sup>d</sup> with Sur. Genl's letter July 30, 1884



Aggregate Area of P. S. U. S. Light House Reservation	54.25 Acres.
" " Rest of Public Land	657.51 "
Estimated " Lot N. 37 Private Grant	8,049.48 "
<b>Aggregate</b>	<b>8,761.24 "</b>

Surveys Designated	By whom Surveyed	Date of Contact	Amount of Surveys	When Surveyed	Mean Dec.
For Surveys already exhibited, see Map of this Township approved October 26 <sup>th</sup> 1874					
Basis of Final Survey of Guadalupe Rancho	G. H. Thompson	February 6 <sup>th</sup> 1867		February 1867	
All lines shaded and dotted, red.	W. M. Minto	December 2 <sup>nd</sup> 1883	4 mis. 68 chs. 65 in.	May 27 <sup>th</sup> 1884	15° East

The above Map of Township N. 10 North, Range N. 36 West, San Bernardino Meridian, is strictly conformable to the field notes of the surveys thereof on file in this Office, which have been examined and approved.  
U. S. Surveyor General's Office,  
San Francisco, California.  
July 29<sup>th</sup> 1884.

W. H. Brown  
U. S. Surv Gen. Cal