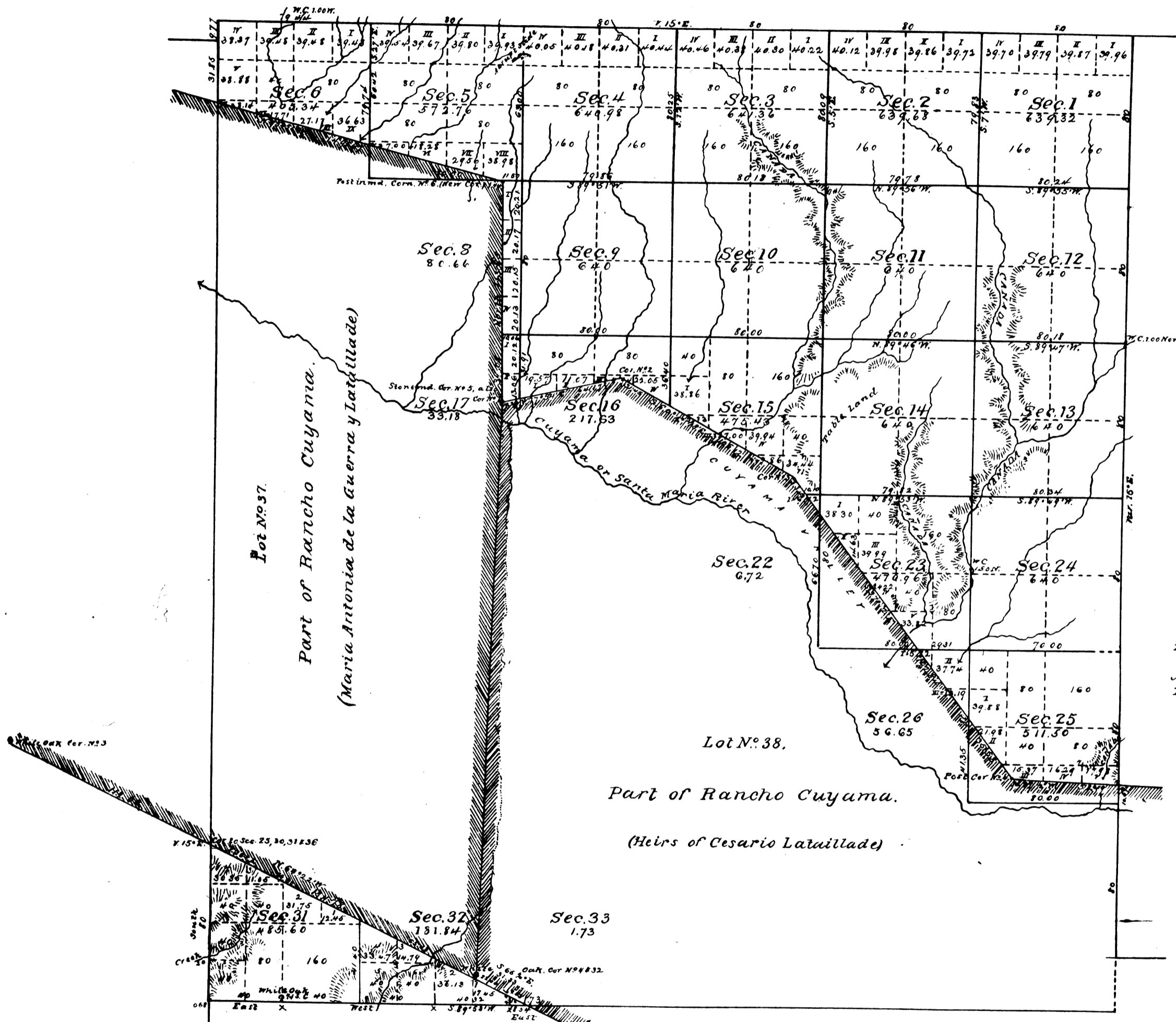


Township N<sup>o</sup> 11 North, Range N<sup>o</sup> 28 West, San Bernardino Meridian.



Received with  
Sur. Genl's Letter  
May 8 1885  
44435

Public Land surveyed in 1880	9,821.7 Acres
" " " " " 1883	669.17 "
Aggregate Area of Public Land	10,490.87 "
Estimated " Private Grants	14,118.66 "
Aggregate	24,609.53 "

Posted  
Sept 8 1885  
Vol 44 P. 184  
M. S.

Surveys Designated	By whom surveyed	Date of Contract	Amount of Surveys	When surveyed	Mean Declin.
Lines previously surveyed exhibited on map approved November 4 <sup>th</sup> 1881.					
West Body of Sec 31	J. R. Glaser	January 26 <sup>th</sup> 1880	1 mic. 0 cks. 00 Lks.	1883	35° East
Part of S. body of 7 <sup>th</sup> sec. 31	"	"	2 " 48 " 86 "	1883	14° 30' East
Ranch Boundaries	"	"	2 mls. 26 " 11 "	1883	16° East
Section lines	"	"	0 " 45 " 46 "	1883	14° 30' East
Connecting lines	"	"	1 mic 17 " 49 "	June 25 <sup>th</sup> 1883	

The above map of Township N<sup>o</sup> 11 North, Range N<sup>o</sup> 28 West, San Bernardino Meridian, is strictly conformable to the field notes of the surveys there of on file in this Office which have been examined and approved.  
Surveyor General's Office,  
San Francisco, California.  
May 8<sup>th</sup> 1885.

W. H. Brown  
U.S. Sur Gen. Cal.