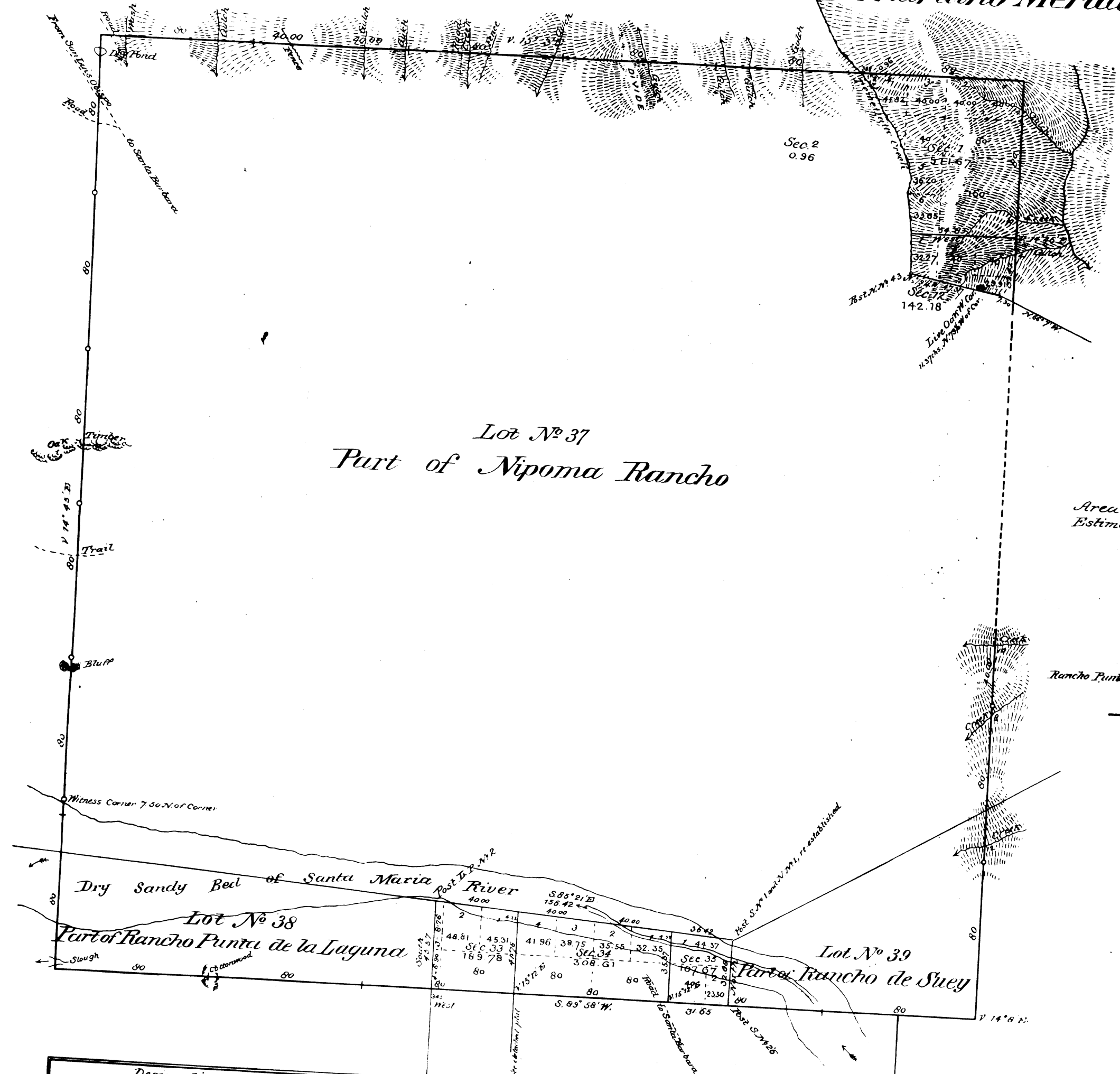
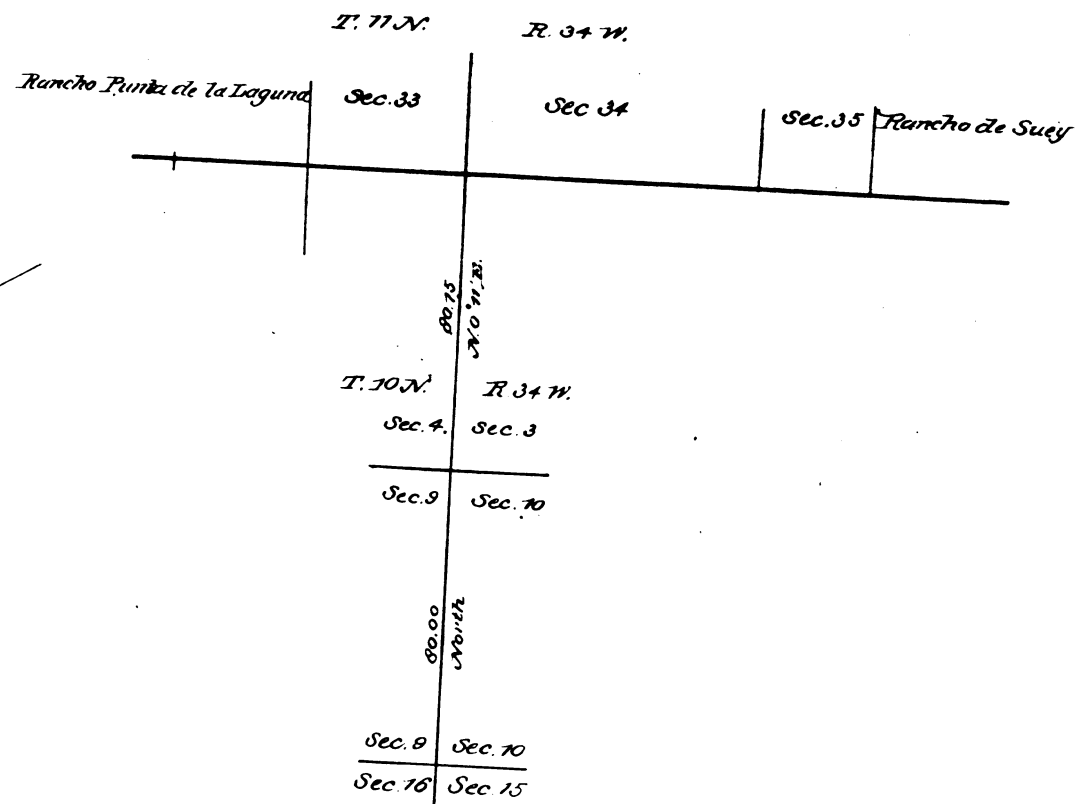


Township N^o 11 North, Range N^o 34 West, San Bernardino Meridian.



Rec'd with Sur. Genl's letter of May 1, 1884

Area of Public Land surveyed	7200.87	Acres
Estimated Area of Private Grants	21779.13	
Aggregate	28980.00	



Designation of Surveys	By whom surveyed	Date of Contract	Amount of Surveys	When surveyed	Mean Declination
Southmost 2 Miles of E. Boundary of Township	R. W. Norris	June 3 rd 1854		1854	
Westmost 1/2 Miles of N. Part of N. Part of E.	J. R. Glover	Oct. 14 th 1859	4 Miles, 40 Chs, 00 Lks.	1859	
Boundaries of Nipoma Rancho	H. C. Mudd	Sept. 2 nd 1862	1 - 30 - 00	1862	
Rancho Punta de la Laguna	J. R. Glover	Oct. 14 th 1859		1859	
Rancho de Suey	J. R. Glover	June 16 th 1863		1863	
Nipoma Rancho, part colored red, re surveyed	J. E. Terrell	July 1 st 1860		1860	
Rancho colored blue, re surveyed	G. H. Thompson	Feb. 20 th 1863		1863	
Part of S. Boundary of Township colored blue, re surveyed	J. R. Glover	Oct. 14 th 1859	1 Mile, 70 Chs, 54 Lks.	1859	
Line between Sections 1 and 2			2 - 74 - 07	1859	
West of Section Lines			0 - 31 - 05	1859	
Connecting lines colored red			0 - 27 - 25	1859	
			2 - 12 - 41	Oct. 14 th 1859	

The above Map of Township N^o 11 North, Range N^o 34 West, San Bernardino Meridian, is strictly conformable to the field notes of the surveys thereof on file in this office, which have been examined and approved.

U. S. Surveyor General's Office,
San Francisco, California,
July 1st 1884

W. H. Brown
U. S. Surveyor Genl.