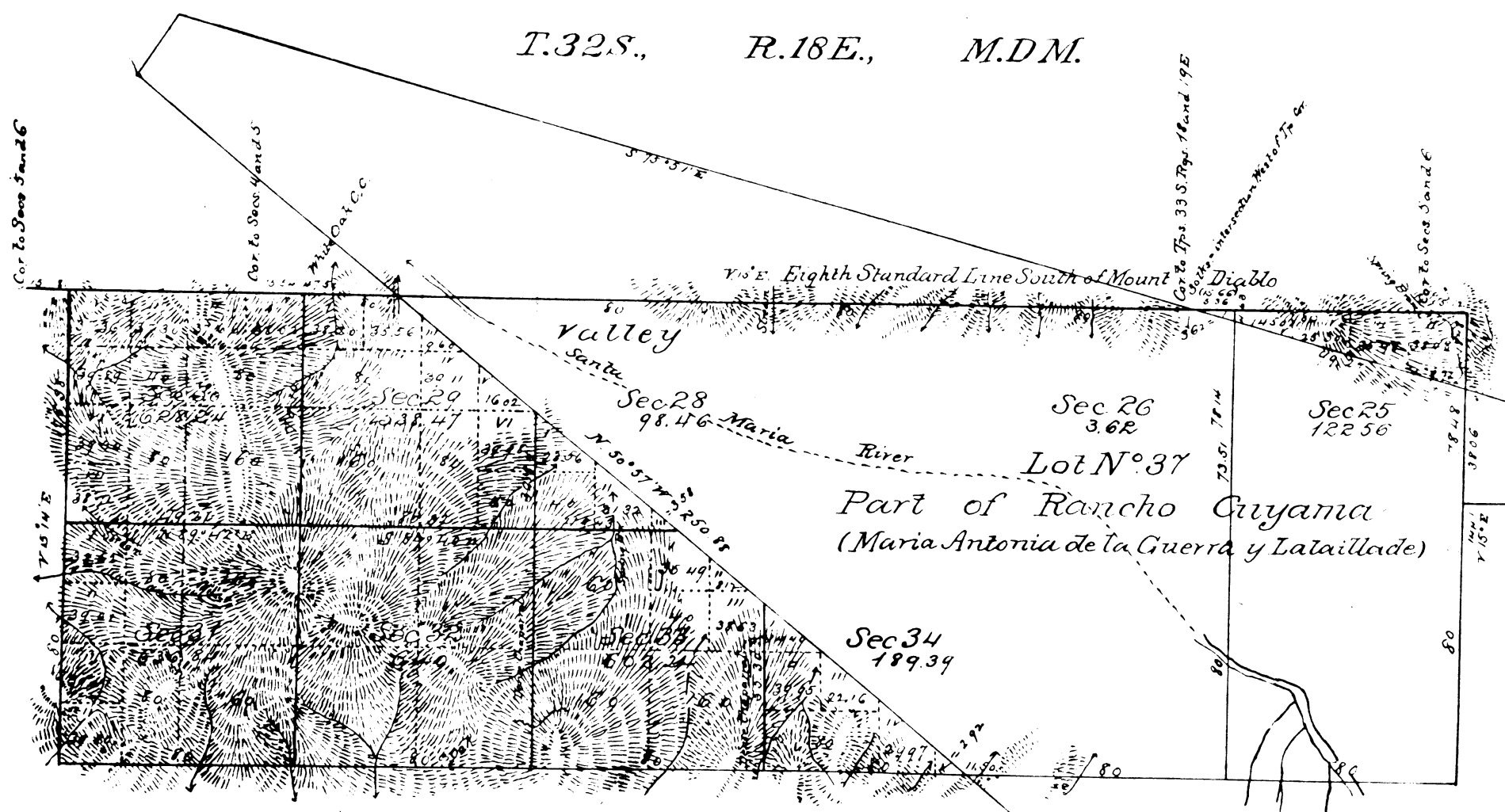


Reed with Genl's letter of April 4 1881 Paid per Report 36,625

Township N^o 12 North Range N^o 30 West San Bernardino Mⁿ

2233

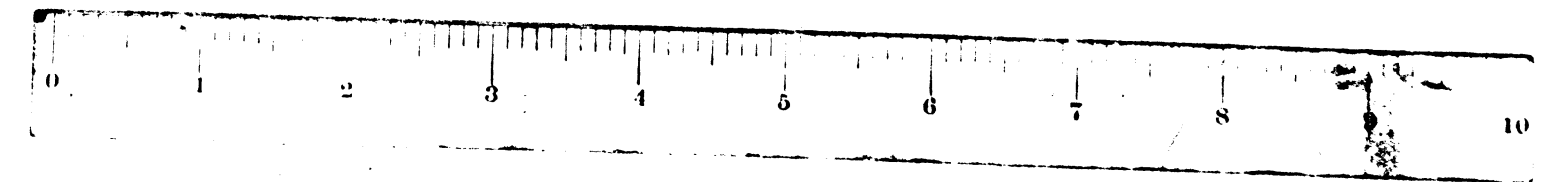


Aggregate Area of Public Land 3459.82 acres
 Estimated . . . Private Grant 4154.38
 Aggregate 7614.20

Section lines colored yellow surveyed but not charged
 Posted in Trust Book, 28 Aug. 1881
 Variation on section lines 15 30 E.

Survey Designated	By Whom Surveyed	Date of Contract	Amount of Survey	When Surveyed	Mean Declination
Boundaries of Lot N ^o 37	R. R. Harris	Inst. May 23, 1878		1878	
Township lines (green) not mountainous	R. Glaser	January 26, 1880	1ml 00chs 00lts	1880	15° E
Rest of N. & S. Bdy. of T ^h mountainous	"	"	4. 79. 94.	"	15° "
Township lines (brown) not mountainous	"	"	2. 78. 48.	"	15° "
Rest of Township lines (mountainous)	"	"	6. 78. 38.	"	15° 7'
Ranch lines (blue) re-surveyed	"	"	4. 30. 15.	"	"
Section lines (mountainous)	"	"	6. 67. 83.	"	5° 30' E
Connecting Lines (red)	"	"	1. 24. 19.	July 2, 1880	"

The above map of Township N^o 12 North Range N^o 30 West San Bernardino Meridian, is strictly conformable to the field notes of the surveys thereon file in this office, which have been examined and approved
 Surveyor General's Office
 San Francisco, California
 November 11th 1881
Chas Wagner
 Survey Genl. Cal.



12