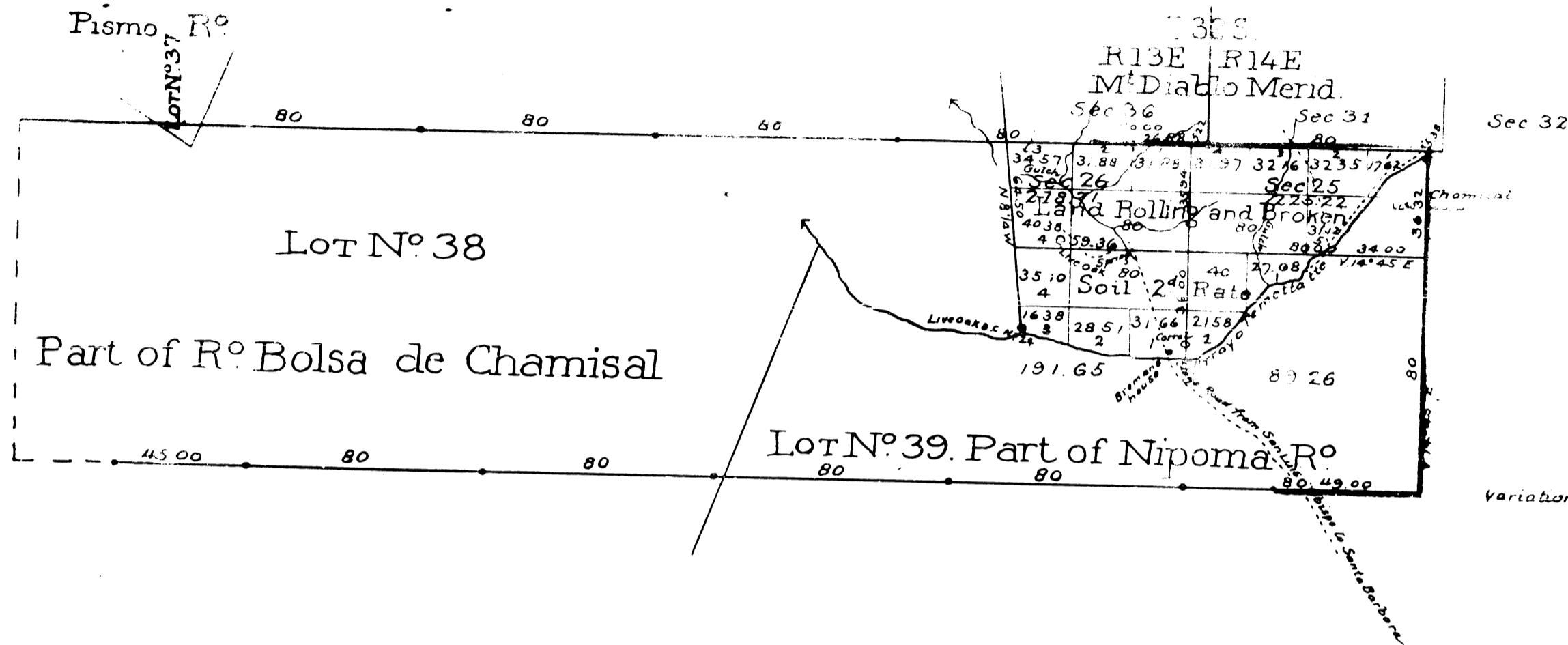


San Bern Genl. Off. 29th 1871

G. A. Ward



Aggregate Area of Public Land	724 84 Acres
Estimated " " Private Grants	4858 52
Aggregate	<u>5583 36</u>

DEPARTMENT OF THE INTERIOR
GEOLOGICAL SURVEY

Washington, D. C. January 1907

I hereby certify that this photo-lithograph is a true and literal exemplification of the township plat of survey to which it purports to relate, now on file in this office.

W. M. Rickard
Commissioner

Surveys Designated	By whom Surveyed	Date of Contract	Amount of Surveys	When Surveyed
South boundary of Township not colored	R. W. Norris	June 3 ^d 1854		1854
North " "	B. M. Henry	October 6 th 1858		1858
Boundaries of Lot N ^o 37	J. E. Terrell	(Inst) Oct. 1 st 1860		1860
" 38	"	" Oct. 18 th 1858		1860
" 39	"	" June 25 th 1859		1860
boundary of Township colored red	H. C. Ward	September 2 ^d 1869	1 ml 34chs 621ks	1869
of Township lines colored red	"	"	2. 5. 32.	1869
Section lines	"	"	2. 51. 30.	October 9 th 1869

The above Map of Township N^o 12 North, Range N^o 35 West, San Bernardino Meridian, is strictly conformable to the field notes of the surveys thereof, on file in this Office, which have been examined and approved.
Surveyor General's Office
San Francisco California
August 29th 1870

August Day Surv. Gen. Cal.