

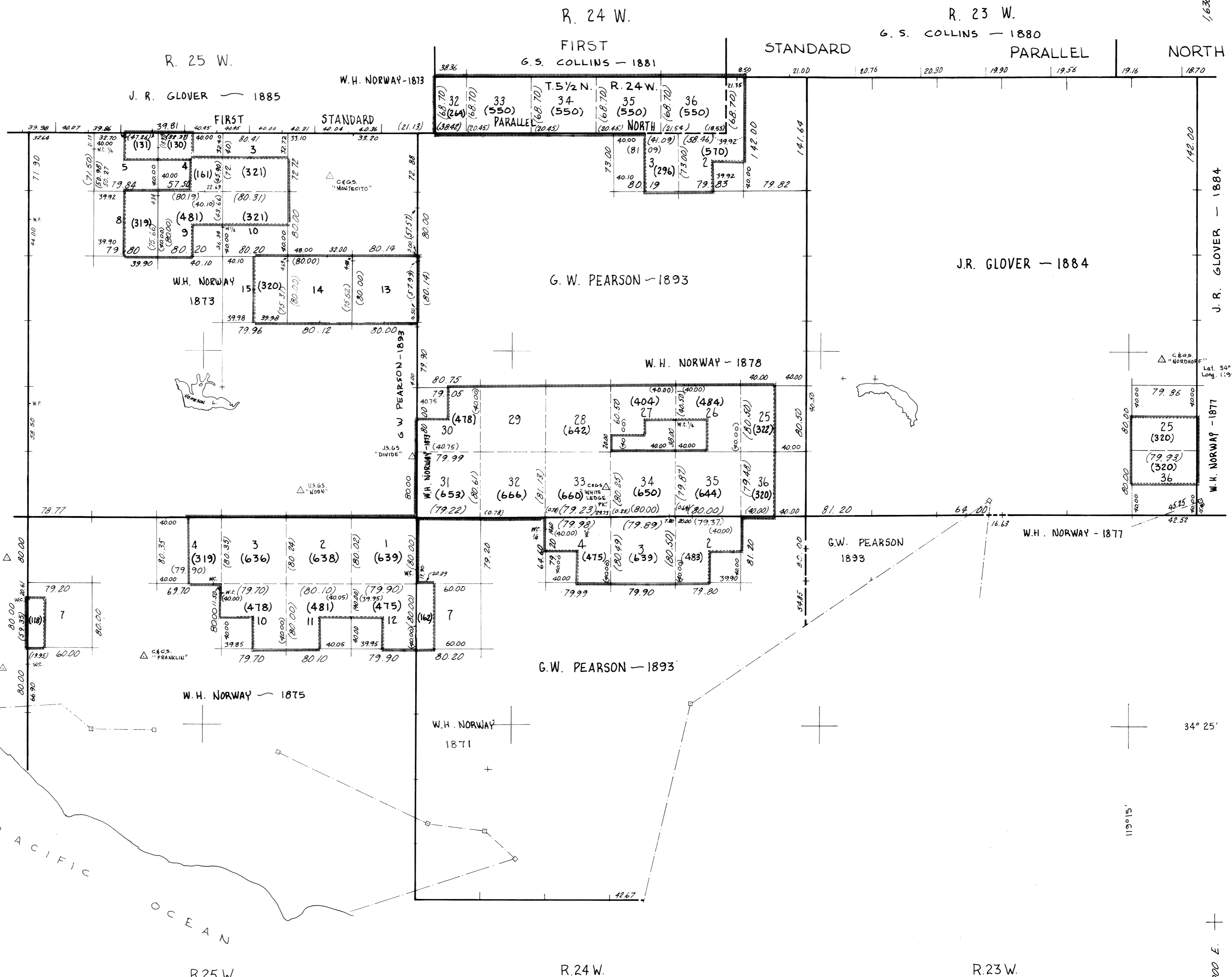
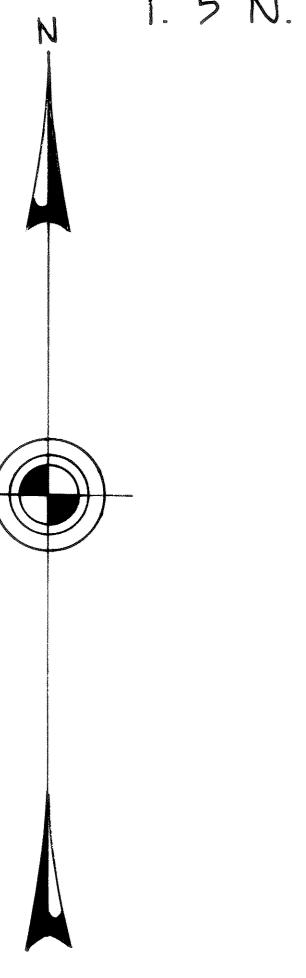
CALIFORNIA PROTRACTOR DIAGRAM

Tps. 4N., R. 24 & 25 W. & Tps. 5N., R. 23, 24 & 25 W.  
& Tp 5 1/2 N., R. 24 W., S.B.M.

BUREAU OF LAND MANAGEMENT  
CALIFORNIA STATE OFFICE—DIVISION OF ENGINEERING  
SACRAMENTO, CALIFORNIA

400,000 N. +  
1,530,000 E.

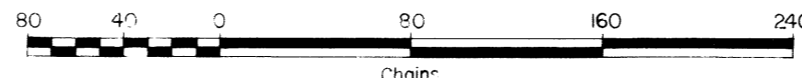
+  
400,000 N.  
1,630,000 E.



320,000 N. +  
1,530,000 E.

+  
320,000 N.  
1,630,000 E.

All triangulation stations are USC BGS unless otherwise noted  
Except where shown otherwise, area of each protracted section is 640 acres.  
Data shown in parenthesis ( ) are determinations made from existing information and subject to rectification.  
Planimetry added from U.S.G.S. topographic maps  
Shaded lines indicate boundaries of surveyed areas



- Lines surveyed ————
- Lines protracted - - - - -
- Horizontal Control Station Δ
- Supplemental Horizontal Control Point ○
- Found Corner plotted from U.S.G.S. quadrangle +
- Boundary Monument □
- Mineral Monument ▲

UNITED STATES DEPARTMENT OF THE INTERIOR  
BUREAU OF LAND MANAGEMENT  
Washington D.C. September 9, 1970  
This diagram represents the official protraction of the rectangular system of survey of the unsurveyed sections in the townships shown above, and is hereby approved  
For The Director  
*Clark F. Sumner*  
Chief, Division Of Cadastral Survey