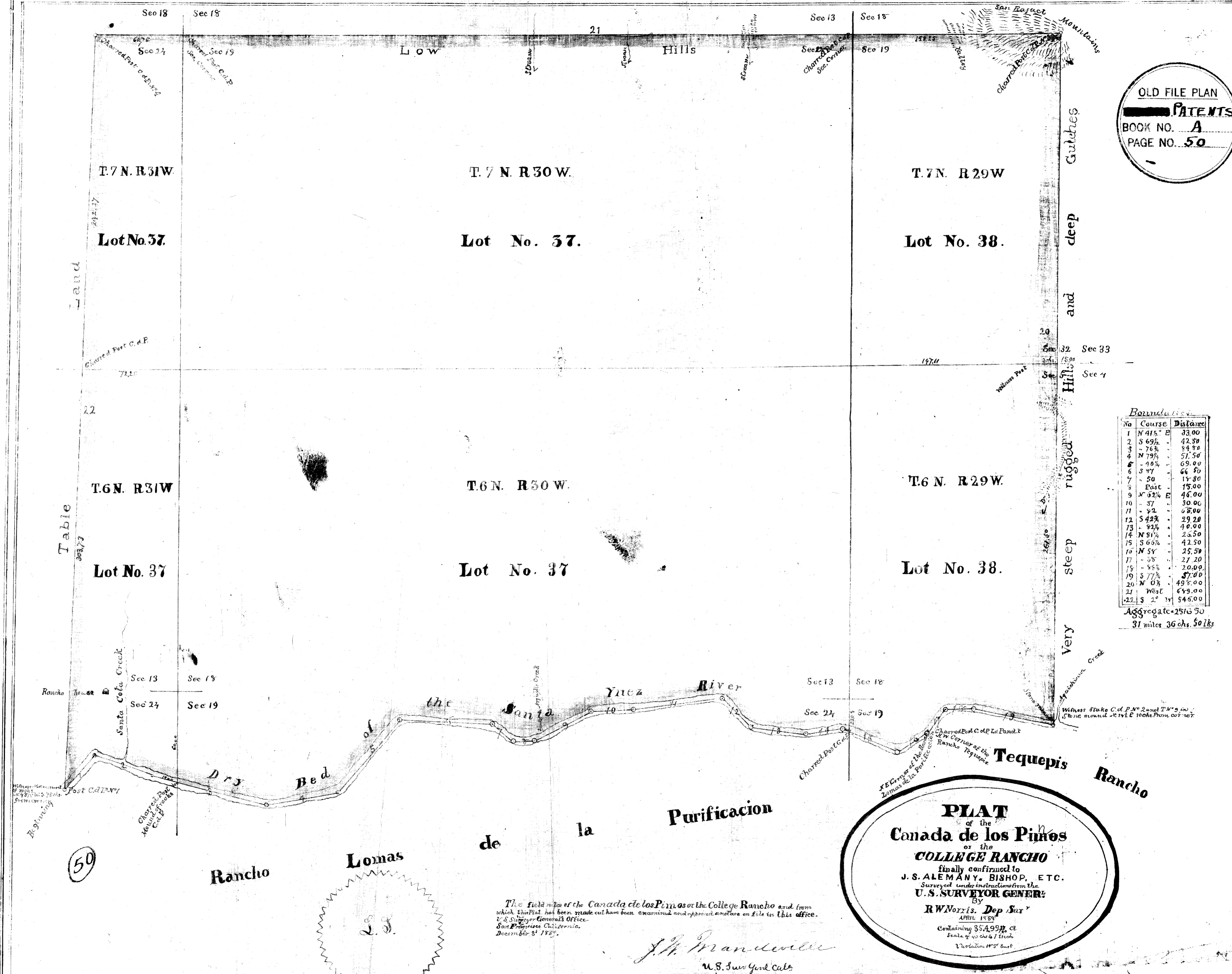


OLD FILE PLAN  
 PATENTS  
 BOOK NO. A  
 PAGE NO. 50



*Boundaries*

No	Course	Distance
1	N 41 1/2° E	33.00
2	S 69 1/2° E	42.50
3	- 76 1/2°	54.80
4	N 78 1/2° E	57.50
5	- 40 1/2°	69.00
6	S 87°	66.50
7	- 50°	15.80
8	East	15.00
9	N 52 1/4° E	46.00
10	- 37°	30.00
11	- 82°	62.00
12	S 42 1/2° E	29.20
13	- 82 1/2°	40.00
14	N 81 1/2° E	23.50
15	S 66 1/2° E	42.50
16	N 54°	25.50
17	- 58°	27.20
18	- 88 1/2°	20.00
19	S 77 1/2° E	37.00
20	N 0 1/2°	49.00
21	West	64.00
22	S 2° W	54.00

Aggregate 2516.50  
 31 miles 36 chs. 50 lks

**PLAT**  
 of the  
**Canada de los Pinos**  
 or the  
**COLLEGE RANCHO**  
 finally confirmed to  
**J. S. ALEMANY, BISHOP, ETC.**  
 Surveyed under instructions from the  
**U. S. SURVEYOR GENERAL**  
 By  
**R. W. Norris, Dep. Sur.**  
 APRIL 1859  
 Containing 85,499 1/2 ac  
 Scale of 40 chs to 1 inch  
 Variation 18° East

The field notes of the Canada de los Pinos or the College Rancho and from which this Plat has been made out have been examined and approved and are on file in this office.  
 U. S. Surveyor General's Office.  
 San Francisco California.  
 December 31 1859.  
*J. A. Mandeville*  
 U. S. Surveyor Genl. Cal.

50