

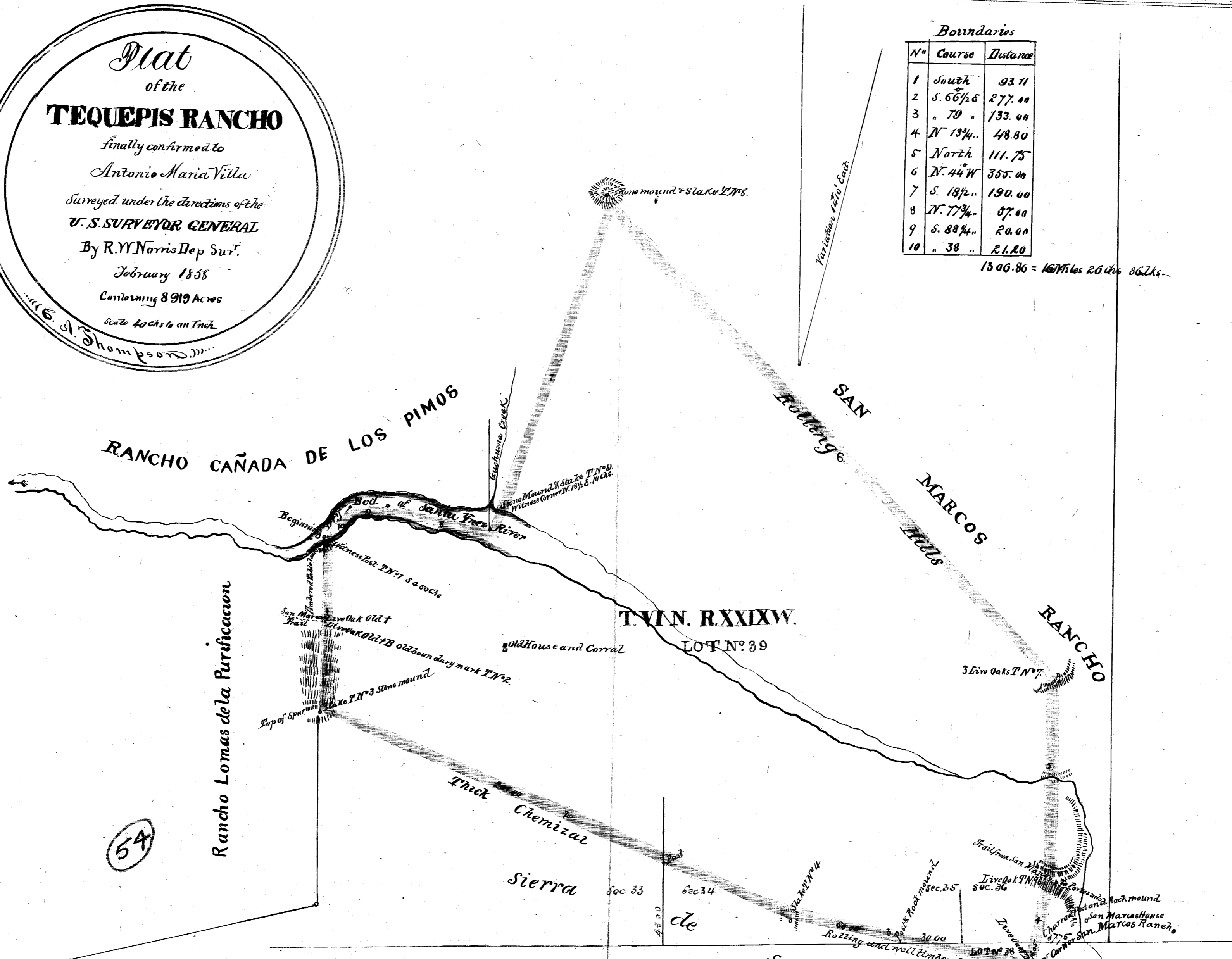
OLD FILE PLAN  
 PATENTS  
 BOOK NO. A  
 PAGE NO. 54

*Plat*  
 of the  
**TEQUEPIS RANCHO**  
 finally confirmed to  
 Antonio Maria Villa  
 Surveyed under the directions of the  
 U. S. SURVEYOR GENERAL  
 By R. Y. Norris Dep Sur.  
 February 1858  
 Containing 8919 Acres  
 Scale 40 chs to an Inch.  
 E. A. Thompson

Boundaries

N <sup>o</sup>	Course	Distance
1	South	93.71
2	S. 66 1/2 E	277.00
3	" 79 "	133.00
4	N 13 1/4 "	48.80
5	North	111.75
6	N. 44 W	355.00
7	S. 18 1/2 "	190.00
8	N. 77 1/4 "	57.00
9	S. 88 1/4 "	20.00
10	" 38 "	21.20

1506.86 = 16 1/2 Miles 26 1/2 Chs 86 Lks.



54

The field notes of the "Tequepis Rancho" and from which this Plat has been made out, have been examined and approved and are on file in this Office.  
 W. S. Swain Surveyor General, San Francisco, California  
 December 30<sup>th</sup> 1859.  
 J. P. Maudsill  
 W. S. Swain Sub. Cal.

T.V.N. RXXIXW.

Jose  
 Approved July 24<sup>th</sup> 1869.  
 Jose S. Nelson  
 Commissioner of the General Land Office