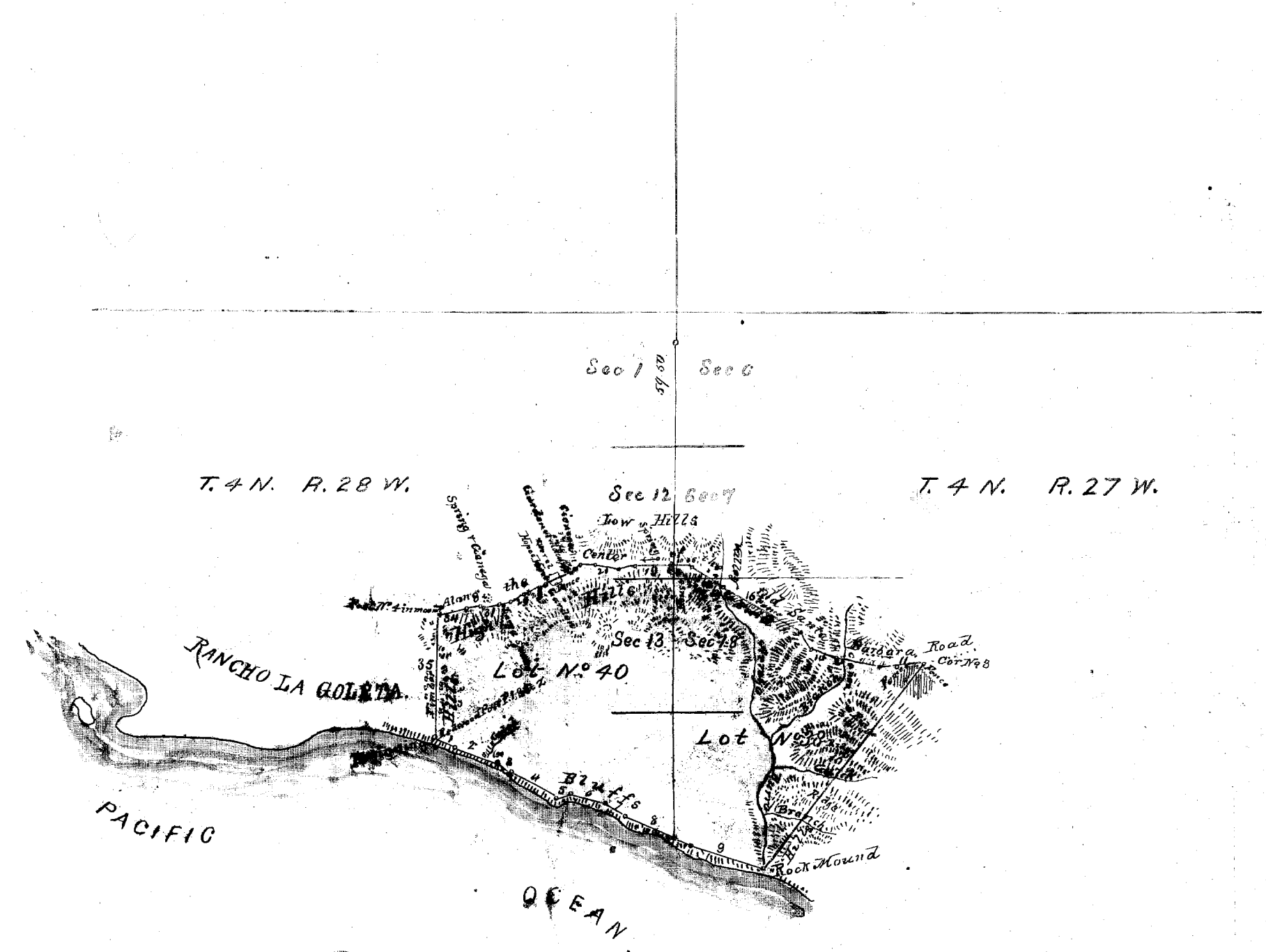


OLD FILE PLAN
PATENTS
 BOOK NO. A
 PAGE NO. 62



PLAT
 of the
Rancho Las Positas y la Calera
 finally confirmed to
M. C. de Jones.
Surveyed under instructions from the
U. S. SURVEYOR GENERAL,
by
J. E. Terrell Dep. Sur.
December 1860.
Containing 3281¹/₂ Acres.
 Scale 80 Chs to 1 In. = 1 Mo.
 Variation 14° 10' East.

Boundaries

No	Course	Distance	No	Course	Distance
1	S 67 1/4° E	13.00	19	N 89 1/4° W	35.00
2	" 66 1/4 "	27.00	20	S 75 1/4 "	9.00
3	" 59 "	10.00	21	N 80 "	13.00
4	" 59 1/4 "	32.22	22	" 85 1/4 "	8.92
5	N 69 1/4 "	6.91	23	S 64 "	3.00
6	S 78 1/2 "	23.00	24	" 46 "	4.00
7	" 56 "	13.41	25	" 62 1/2 "	18.00
8	" 66 "	42.73	26	" 66 1/4 "	4.00
9	" 72 1/4 "	45.17	27	" 52 1/4 "	7.00
10	N 88 "	155.76	28	N 87 1/4 "	2.00
11	S 83 "	16.92	29	S 68 "	10.00
12	N 84 "	9.00	30	" 75 1/2 "	5.00
13	" 75 1/2 "	29.70	31	" 82 1/2 "	9.00
14	" 65 1/4 "	14.00	32	N 76 1/2 "	2.00
15	" 88 1/4 "	12.00	33	S 76 1/4 "	8.00
16	" 59 1/4 "	53.35	34	" 73 1/4 "	18.51
17	" 40 1/2 "	4.00	35	South	73.74
18	" 67 "	18.00			

526.17 233.17
 626.17
 Aggregate of Exterior Boundaries 759.34 = 9 Ms. 38 Chs. 34 L. Ks.

The field notes of the Rancho Las Positas y la Calera, from which this plat has been made out, have been examined and approved, and are on file in this Office.
 U. S. Surveyor General's Office San Francisco, California, January 7th 1861.
 J. W. Mendenhall
 U. S. Surveyor General, Cal.

Note: Notice of the approval of this plat and its retention in Office for four weeks subject to inspection was published from 16th April to 18th May 1861, in pursuance of the Act of Congress of June 14, 1860.
 J. W. Mendenhall
 U. S. Surveyor General Cal.

A full, true and correct Copy of the original Plat on file in this Office.
 U. S. Surveyor General's Office
 San Francisco California, Oct 23rd 1867.
 J. Upson
 U. S. Surveyor General Cal.

J. W. Mendenhall