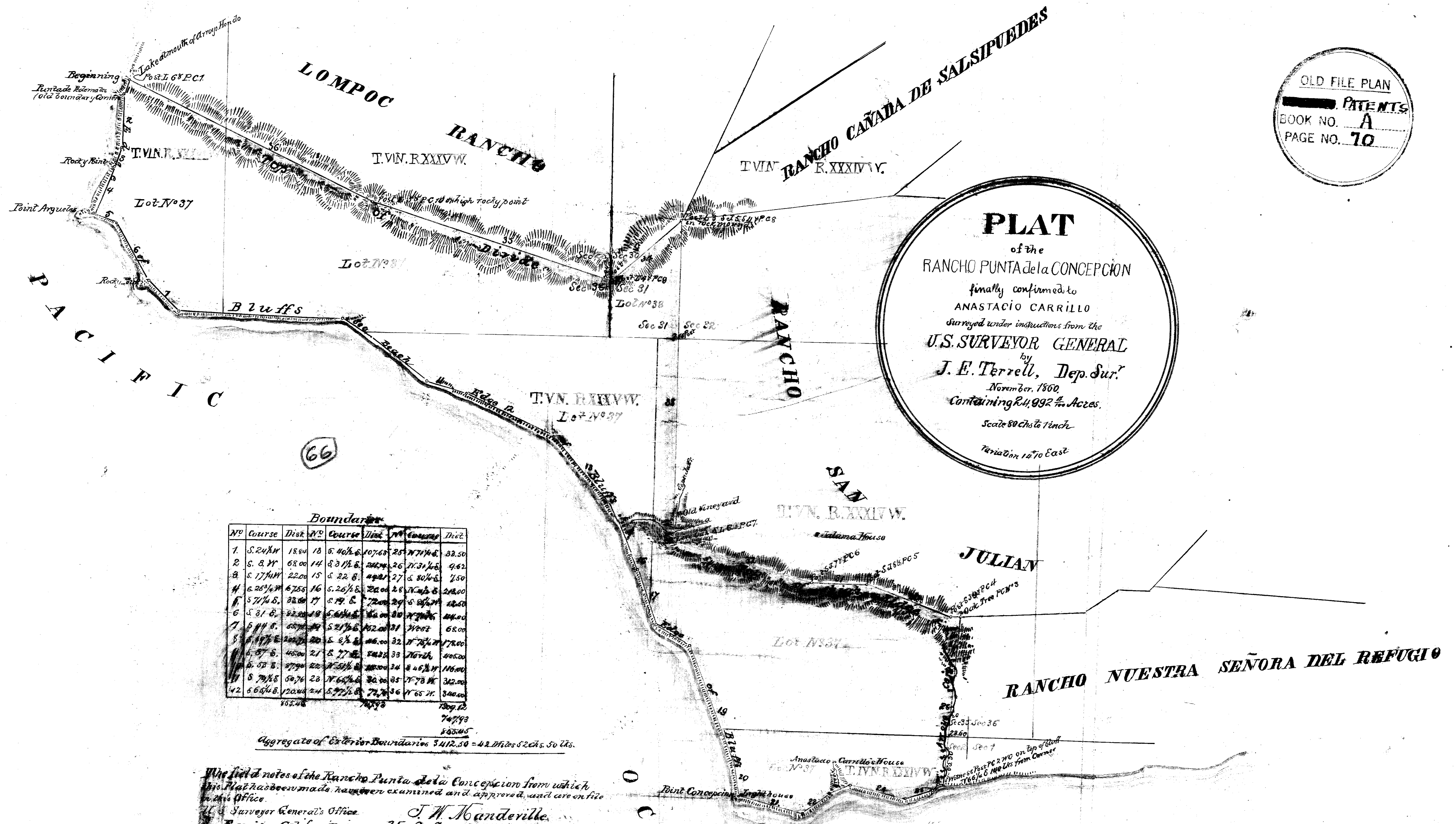


OLD FILE PLAN
PATENTS
 BOOK NO. A
 PAGE NO. 70



Boundary

No	Course	Dist	No	Course	Dist	No	Course	Dist
1	S. 24 1/2 N	18.64	18	S. 40 1/2 E	107.63	25	N 71 1/2 W	32.50
2	S. 8 1/2 N	58.00	14	S. 3 1/2 E	202.74	26	N 31 1/2 W	9.62
3	S. 17 1/2 N	22.00	15	S. 22 1/2 E	492.27	27	S. 80 1/2 E	7.50
4	S. 26 1/2 N	67.55	16	S. 26 1/2 E	222.00	28	N 70 1/2 W	248.00
5	S. 7 1/2 S	32.00	17	S. 19 1/2 E	72.00	29	S. 83 1/2 W	12.50
6	S. 31 1/2 S	52.00	19	S. 64 1/2 E	164.00	30	N 70 1/2 W	44.00
7	S. 14 1/2 S	65.77	20	S. 21 1/2 E	152.00	31	N 60 1/2 W	68.00
8	S. 17 1/2 S	200.77	21	S. 4 1/2 E	46.00	32	N 74 1/2 W	178.00
9	S. 57 1/2 S	450.00	22	S. 77 1/2 E	542.33	33	N 61 1/2 W	400.00
10	S. 53 1/2 S	37.70	23	N 53 1/2 E	200.00	34	S. 46 1/2 N	146.00
11	S. 70 1/2 S	50.76	24	N 64 1/2 E	30.00	35	N 73 1/2 W	342.00
12	S. 64 1/2 S	120.00	25	S. 77 1/2 E	77.78	36	N 65 1/2 W	340.00
		155.28			747.93			503.45
					747.93			503.45

Aggregate of Exterior Boundaries 3412.50 = 42 Miles 52 Chs. 50 Ls.

The field notes of the Rancho Punta de la Concepcion from which this Plat has been made have been examined and approved, and are on file in this Office.
 U.S. Surveyor General's Office,
 San Francisco, California
 January 7th 1861.
J. W. Henderille
 U. S. Surv. Gen. Cal.

Notice of the approval of this Plat and its retention in Office for four weeks subject to inspection was published from the 2^d to the 28th of February 1861 in pursuance of the Act Congress of June 14th 1860.
J. W. Henderille
 U. S. Surv. Gen. Cal.

A full, true and correct copy of the Original Plat on file in this Office.
 U. S. Surveyor General's Office,
 San Francisco, California, November 2^d 1861.

C. F. Beale
 U. S. Surveyor Gen. Cal.