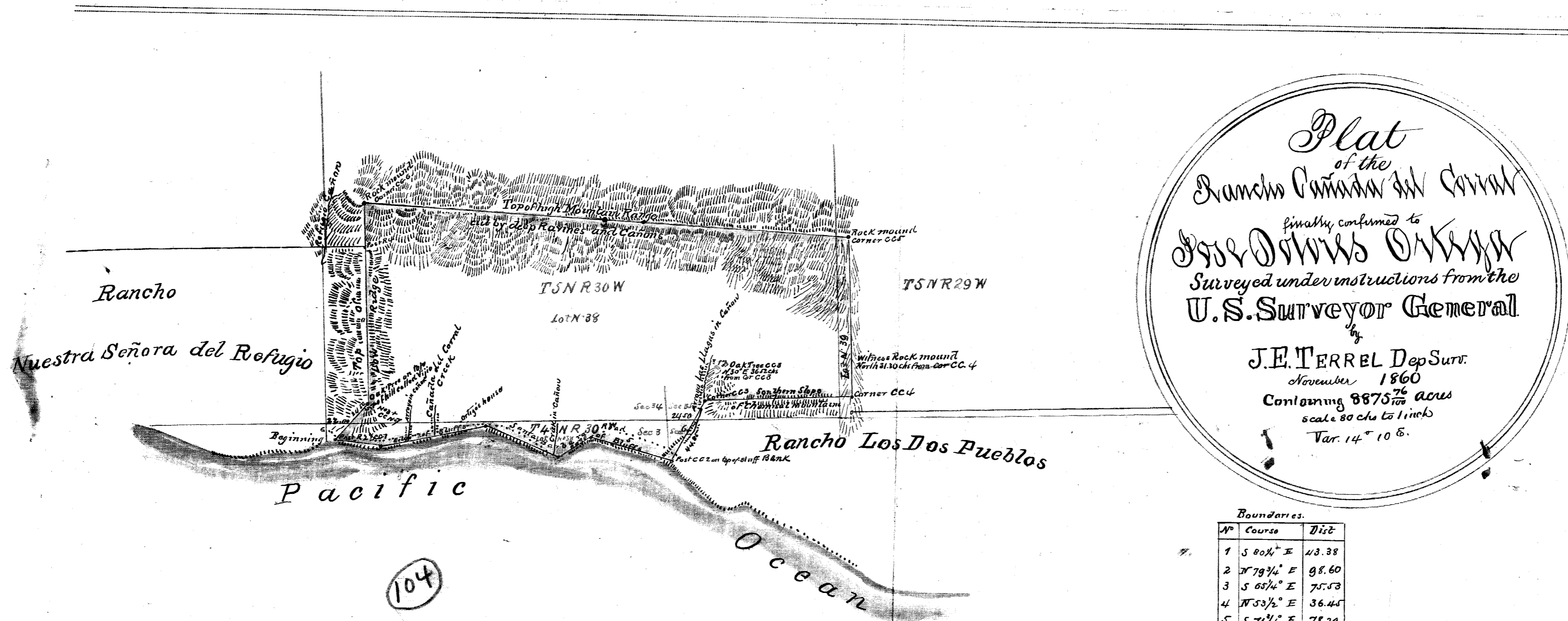


OLD FILE PLAN  
**PATENTS**  
 BOOK NO. **A**  
 PAGE NO. **104**



*Plat*  
 of the  
 Rancho Cañada del Corral  
 finally confirmed to  
 Jose Owens Ortega  
 Surveyed under instructions from the  
 U. S. Surveyor General  
 J. E. TERREL Dep. Surv.  
 November 1860  
 Containing 8875 <sup>76</sup>/<sub>100</sub> aces  
 scale 80 chs to 1 inch  
 Var. 14° 10' E.

Boundaries.

No	Course	Dist
1	S 80 1/2° E	43.38
2	N 79 3/4° E	98.60
3	S 65 1/4° E	75.53
4	N 53 1/2° E	36.45
5	S 71 1/4° E	78.29
6	N 30° E	65.00
7	N 88 1/2° E	138.26
8	N 67° W	149.30
9	N 85 1/2° W	454.35
10	South	185.00
11	S 42° W	46.00

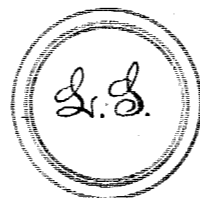
Aggregate 1570.16 = 17 Miles 10 chs 16 Ls.

104

The field notes of the Rancho Cañada del Corral, from which this Plat, has been made out, have been examined and approved, and are on file in this office.

U.S. Surveyor General's Office  
 San Francisco, California  
 January 7<sup>th</sup> 1861

Signed J. H. Mauderill  
 U.S. Sur. Genl. Cal<sup>s</sup>



Note. Notice of the approval of this plat, and its retention in office for four weeks subject to inspection, was published from 2<sup>d</sup> of February to 28<sup>th</sup> of February 1861, in pursuance of the Act of Congress of June 14, 1860

Signed J. H. Mauderill  
 U.S. Sur. Genl. Cal<sup>s</sup>

A true, full and correct copy of the original map, on file in this office.  
 U.S. Surveyor General's Office,  
 San Francisco, California  
 November 2<sup>d</sup> 1861.  
 O. H. Beato,  
 U.S. Sur. Genl. Cal<sup>s</sup>