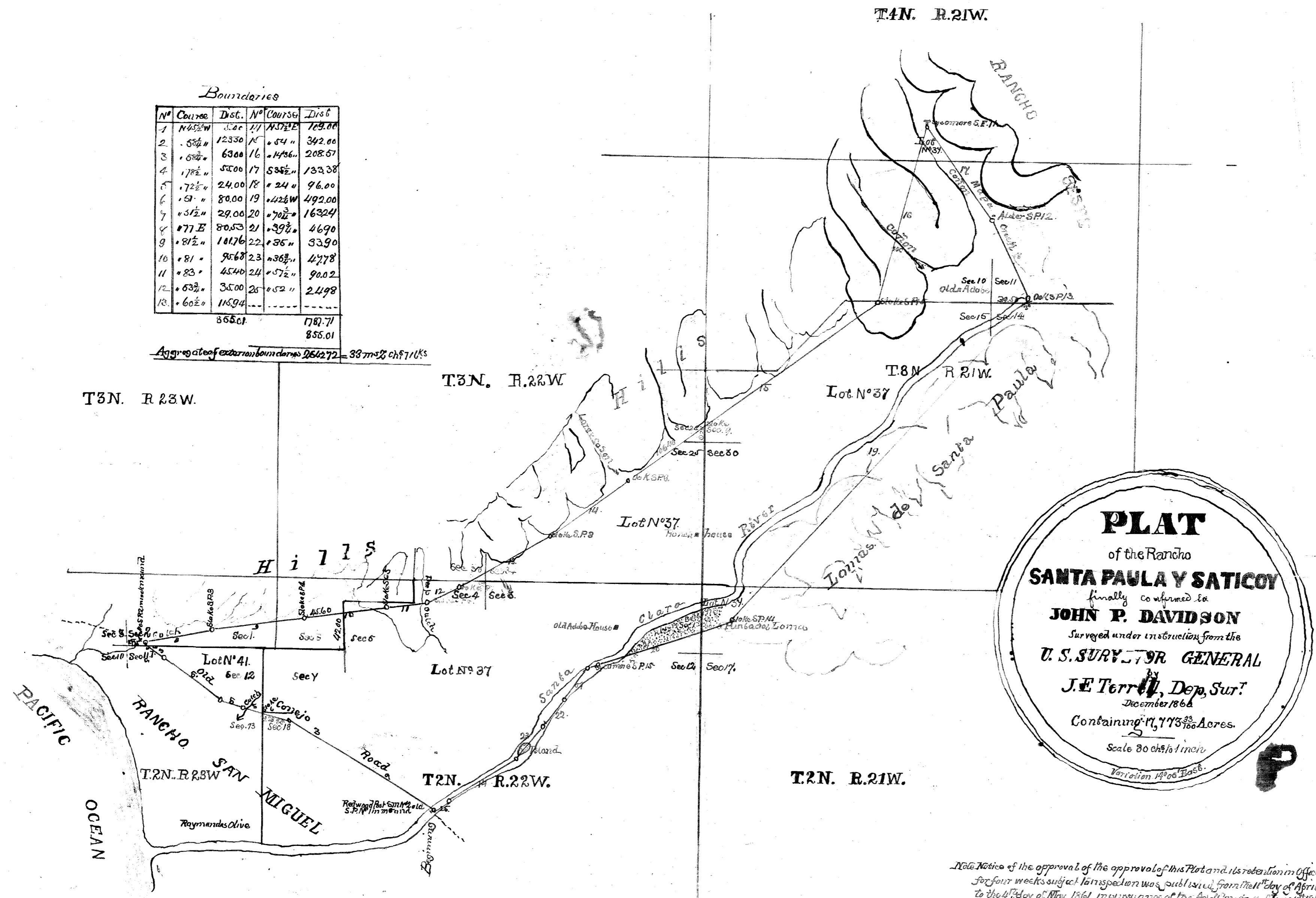


OLD FILE PLAN  
**PATENTS**  
 BOOK NO. **A**  
 PAGE NO. **112**

*Boundaries*

N <sup>o</sup>	Course	Dist.	N <sup>o</sup>	Course	Dist.
1	N 45 1/2 W	1233.00	11	N 37 1/2 E	109.00
2	S 5 1/2 W	630.00	12	S 54 W	342.00
3	S 5 1/2 W	630.00	16	N 14 1/2 E	208.67
4	N 78 1/2 W	550.00	17	S 35 1/2 W	133.38
5	N 72 1/2 W	24.00	18	N 24 W	96.00
6	S 31 W	80.00	19	N 42 1/2 W	492.00
7	N 31 1/2 W	29.00	20	N 70 1/2 W	1632.41
8	N 77 E	80.53	21	N 39 1/2 W	469.0
9	N 81 1/2 W	101.76	22	N 35 W	339.0
10	N 81 W	95.68	23	N 36 1/2 W	477.8
11	N 83 W	45.40	24	N 57 1/2 W	90.02
12	N 63 1/2 W	35.00	25	N 52 W	249.8
13	N 60 1/2 W	115.94			
		855.61			1787.71
					855.01

Aggregate of exterior boundaries 2642.72 = 387 m 2/3 ch 87 1/4



**PLAT**  
 of the Rancho  
**SANTA PAULA Y SATICOY**  
 finally confirmed to  
**JOHN P. DAVIDSON**  
 Surveyed under instruction from the  
**U. S. SURVEYOR GENERAL**  
**J. E. Terry, Dep. Sur.**  
 December 1866  
 Containing 17,773 3/100 Acres.  
 Scale 30 ch to 1 inch.  
 Variation 14° 06' True S.

Notice of the approval of the approval of this Plat and its registration in Office for four weeks subject to inspection was published from the 1<sup>st</sup> day of April to the 4<sup>th</sup> day of May 1867. In pursuance of the Act of Congress of June 1860.  
 J. W. Mandeville,  
 U. S. Survey Genl. Cal.

The field notes of the Rancho Santa Paula y Saticoy and from which this plat has been made out have been examined and approved and are on file in this Office.  
 U. S. Surveyor General's Office.  
 San Francisco, California.  
 February 25<sup>th</sup> 1867.

J. W. Mandeville  
 U. S. Survey Genl. Cal.

A full, true, and correct copy of the Original plat on file in this Office,  
 U. S. Surveyor General's Office,  
 San Francisco, California,  
 October 25<sup>th</sup> 1870.

*Sherman Day*  
 U. S. Survey Genl. Cal.

112