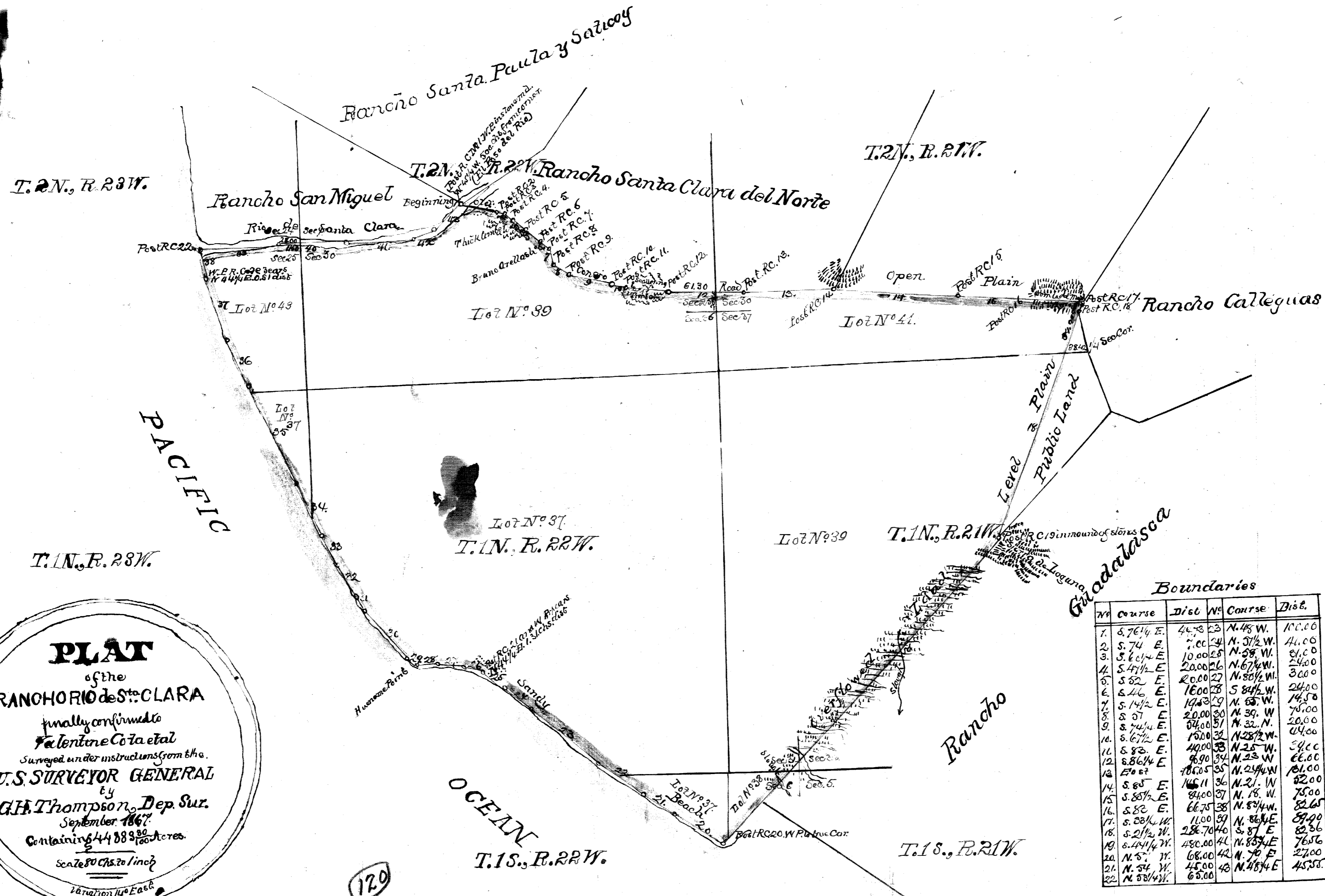


OLD FILE PLAN
PATENTS
 BOOK NO. A
 PAGE NO. 120

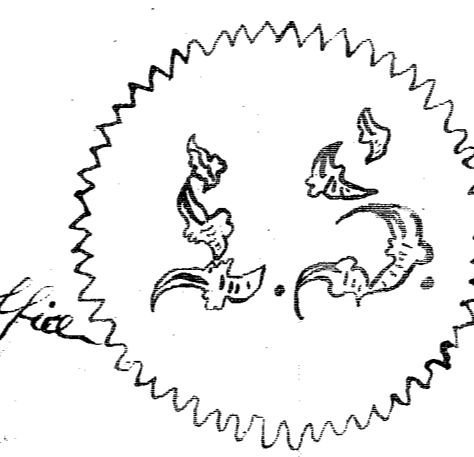


PLAT
 of the
RANCHO RIO DE SANTA CLARA
 finally confirmed to
Valentine Coia et al
 Surveyed under instructions from the
U.S. SURVEYOR GENERAL
 by
G.H. Thompson, Dep. Sur.
 September 1867
 Containing 44,883⁸⁰/₁₀₀ Acres.
 Scale 80 Chs. to 1 inch
 Variation 14° East

Boundaries

No	Course	Dist	No	Course	Dist.
1.	S. 76 1/4 E.	44.78	23.	N. 45 W.	100.00
2.	S. 74 E.	7.00	24.	N. 3 1/2 W.	41.00
3.	S. 6 1/4 E.	10.00	25.	N. 58 W.	61.00
4.	S. 4 1/2 E.	20.00	26.	N. 67 1/2 W.	24.00
5.	S. 52 E.	20.00	27.	N. 50 1/2 W.	30.00
6.	S. 46 E.	16.00	28.	S. 84 1/2 W.	24.00
7.	S. 14 1/2 E.	19.00	29.	N. 35 W.	14.50
8.	S. 57 E.	20.00	30.	N. 39 W.	75.00
9.	S. 74 1/2 E.	34.00	31.	N. 32 N.	20.00
10.	S. 67 1/2 E.	15.00	32.	N. 28 1/2 W.	64.00
11.	S. 52 E.	40.00	33.	N. 25 W.	54.00
12.	S. 36 1/4 E.	9.90	34.	N. 23 W.	66.00
13.	E. 67	18.00	35.	N. 24 1/4 W.	61.00
14.	S. 65 E.	14.11	36.	N. 21 W.	82.00
15.	S. 58 1/2 E.	84.00	37.	N. 16 W.	75.00
16.	S. 52 E.	66.75	38.	N. 13 1/4 W.	82.65
17.	S. 38 1/4 W.	11.00	39.	N. 10 1/2 E.	84.00
18.	S. 21 1/2 W.	286.70	40.	S. 87 E.	82.36
19.	S. 44 1/4 W.	480.00	41.	N. 83 1/4 E.	76.56
20.	N. 5 W.	68.00	42.	N. 70 E.	27.00
21.	N. 54 W.	45.00	43.	N. 70 E.	45.58
22.	N. 58 1/4 W.	65.00			

Approved 31st August 1872
 Willi Drummond
 Commissioner of the General Land Office



The field notes of the Rancho Rio de Santa Clara from which this Plat has been made, have been examined and approved and are on file in this Office
 U.S. Surveyor General's Office
 San Francisco, California.
 June 22nd. 1869

Sherrill Day
 U.S. Surv. Gen. Cal.

ExL