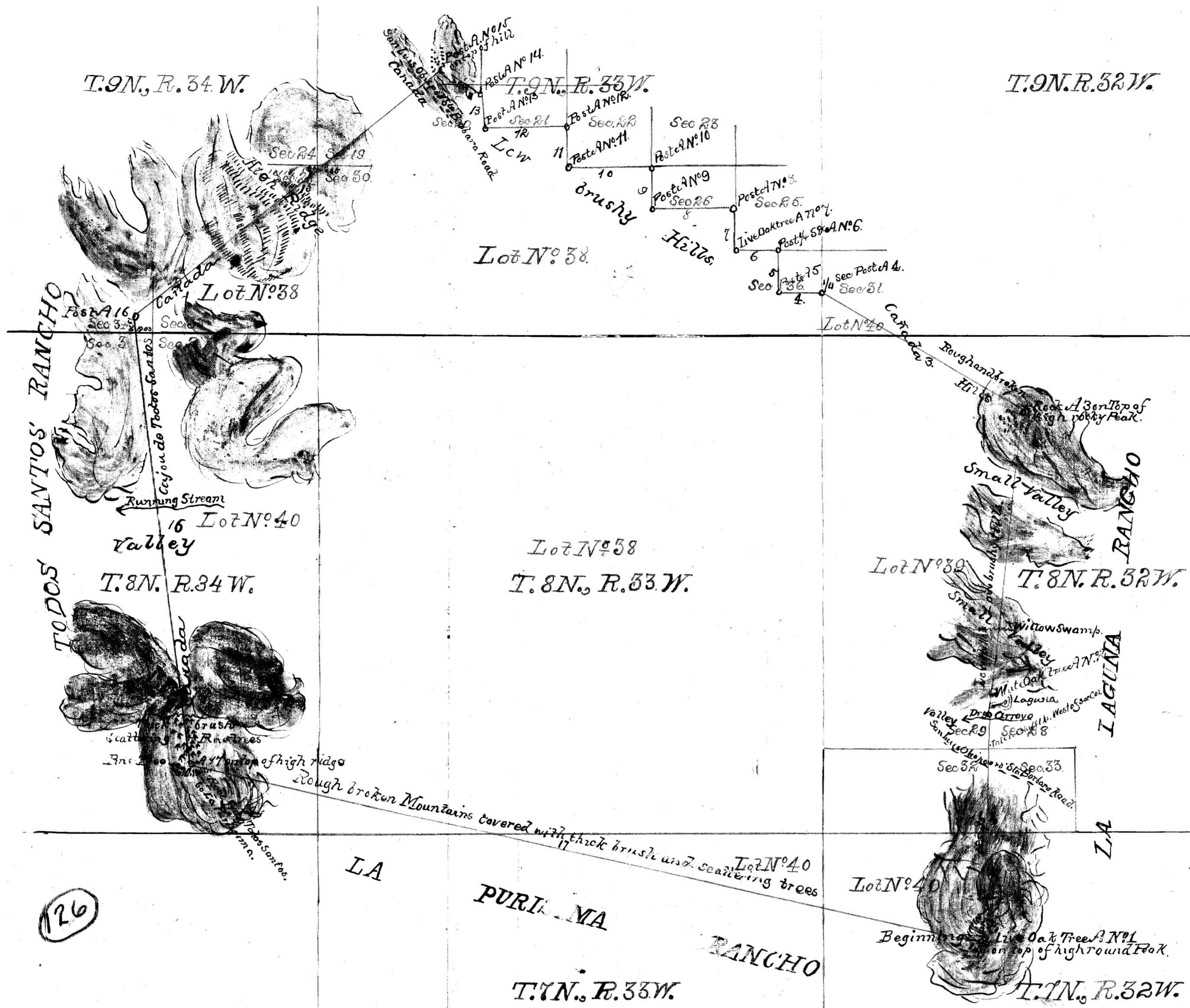


OLD FILE PLAN
 PATENTS
 BOOK NO. A
 PAGE NO. 126

PLAT
 of the
RANCHO LOS ALAMOS
 finally confirmed to
JOSE ANTONIO DE LA GUERRA
 surveyed under instructions from the
U. S. SURVEYOR GENERAL
 by
J. E. TERRILL, Dep. Sur.
 September, 1860
 Containing 4880 3/4 Acres
 Scale 80 chs. to 1 inch
 January, 1864



Boundaries

Nº	Course	Dist
1	N. 8 1/2° E	231.25
2	N. 53/4° E	278.84
3	N. 59 1/4° W	288.46
4	West	40.00
5	North	40.00
6	West	40.00
7	North	40.00
8	West	80.00
9	North	40.00
10	West	80.00
11	North	40.00
12	West	80.00
13	North	31.60
14	N. 59 1/4° W	47.00
15	S. 50 1/4° W	380.15
16	S. 71/4° E	424.65
17	S. 71/4° E	774.62

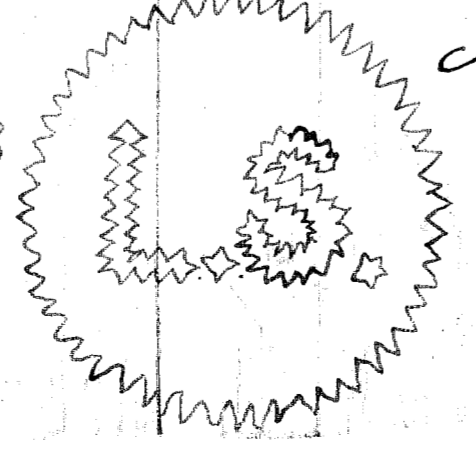
Note: Notice of the approval of this plat and its retention in Office for four weeks subject to inspection, was published from the 17th January 1861 to the 23rd March, 1861 in pursuance of the Act of Congress of June 14th 1860.

J. W. Mandeville
 U. S. Surv. Gen. Cal.

Approved 3^d September, 1872
 Willis Drummond
 Commissioner of the General Land Office

Note: Thereby certify that in accordance with the act of Congress of July 1st 1864 this survey and plat were published in the "Ultra California" published in the City and County of San Francisco, for four weeks; the date of the first publication being the 8th of November 1871. Also in the Santa Barbara Press published in the County of Santa Barbara four weeks the date of the first publication being the 11th of November 1871. This plat remained in this Office subject to inspection during ninety days from the date of the first publication.

J. R. Hardenberg
 U. S. Surv. Gen. Cal.



The field notes of the Rancho Los Alamos and from which this Plat has been made out have been examined and approved, and are on file in this Office
 U. S. Surveyor General's Office
 San Francisco, California.
 December 5th 1860

J. W. Mandeville
 U. S. Surv. Gen. Cal.

A full true and correct copy of the Original Plat on file in this Office
 U. S. Surveyor General's Office
 San Francisco, California.
 March 28th 1872.

J. R. Hardenberg
 U. S. Surv. Gen. Cal.